



Ashland School District
inspiring learning for life



FEBRUARY 2023

BOND NEWSLETTER

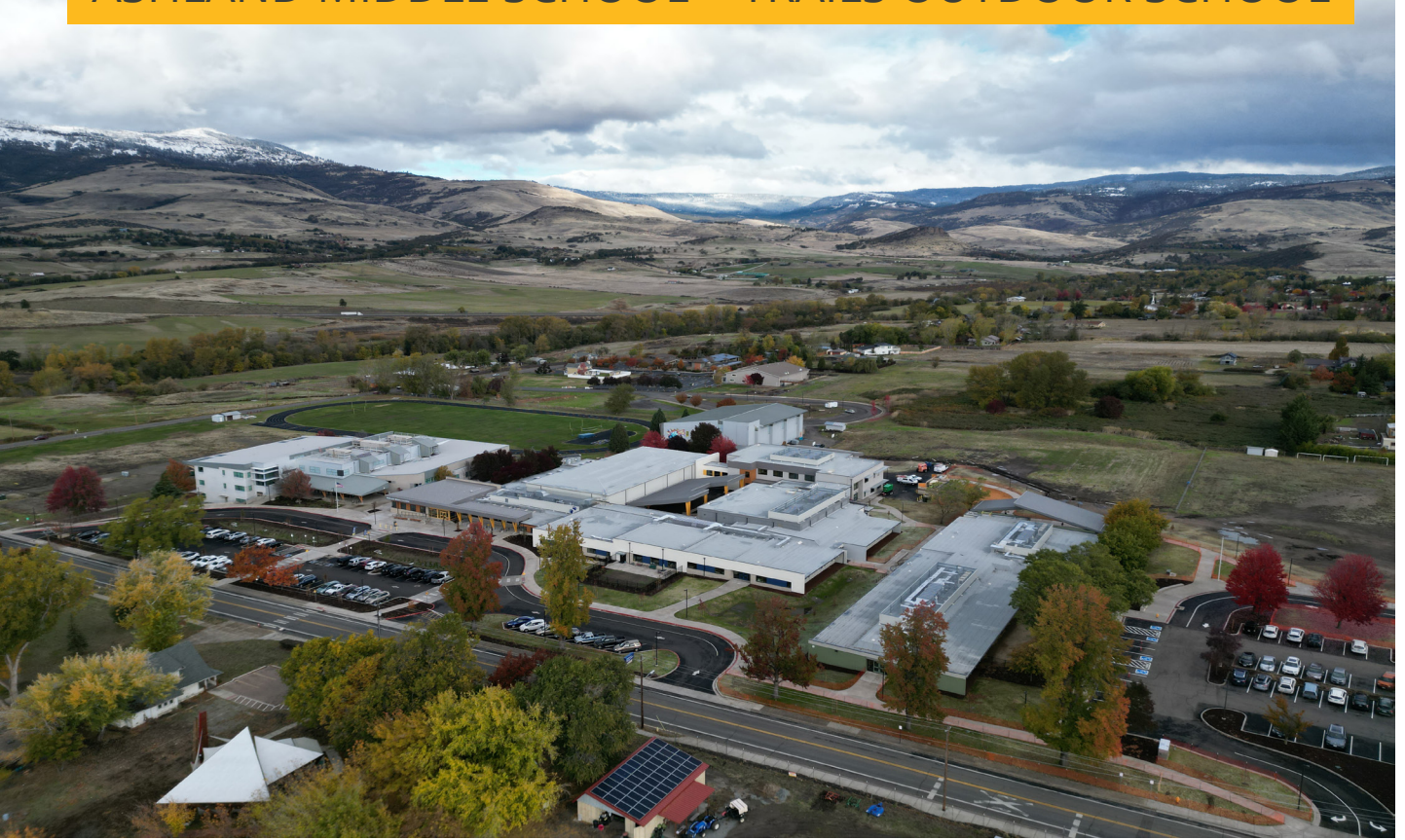
GENERAL PROGRAM UPDATE

In January, the Ashland High School moved ahead with the renovation project by accepting proposals for Construction Manager|General Contractor (CMGC). Walker Elementary made great strides in progress towards achieving project completion in April. The Bellview Elementary HVAC project kicked off now that a contractor has been awarded the construction contract. The Solar project is moving ahead with an anticipated bidding window of late spring.



COMBINED ASHLAND MIDDLE SCHOOL AND
TRAILS OUTDOOR SCHOOL CAMPUS

ASHLAND MIDDLE SCHOOL + TRAILS OUTDOOR SCHOOL



CURRENT ACTIVITIES

Ashland Middle School and TRAILS Outdoor School are complete, and staff and students are fully occupying the new spaces.

Throughout each campus, upgrades in HVAC systems, plumbing, and electrical are prevalent, introducing energy efficiency air quality improvements and climate resilience resulting in more accommodating environments for maximum learning opportunities. Each school has received upgraded windows, new roof systems, new restrooms and redesigned administrative/office spaces. The project also resulted in improvements to overall campus security, technology infrastructure, seismic upgrades and accessibility. Both schools have been retrofitted with fire alarm and fire suppression systems as well. Each school campus has its own vehicle entry and exit with clear-cut pick up and drop off areas to assist with reduced congestion during high traffic periods.

ACTIVITIES SCHEDULED FOR NEXT PERIOD

- Continued commissioning



Ashland Middle School comprises about 40,000 sq. ft. of the project including a new library and addition of a newly constructed two-story 6th grade building with an elevator.

The campus includes a leadership room with full kitchen designed to host campus events. The SPED area includes multiple classrooms and offices with an additional calming space, private restrooms, and secure outdoor learning area. The covered courtyard is central to the campus with a multifunctional design including reclaimed wood beam stadium style benches for outdoor educational purposes and skateboard accommodating features allowing students a safe and fresh outdoor space for various activities. The kitchen and cafeteria have also been upgraded with new appliances and renewed finishes.

The covered courtyard is central to the campus with a multifunctional design including reclaimed wood beam stadium style benches for outdoor educational purposes and skateboard accommodating features allowing students a safe and fresh outdoor space for various activities.





TRAILS Outdoor School has an entirely separate, newly renovated building stretching across 26,000 sq. ft. of useable space.

The campus now includes 5 classrooms, a library, art lab, testing room, SPED room, music facility and multi-purpose room. There is also a grand outdoor structure attached to the building, allowing activities in adverse weather, including an integrated rock-climbing wall. The multi-purpose room, also known as the community room, is the highlight of the building. This area not only provides a place for staff and students to congregate for events but is equipped with large windows and roll up doors that can be opened to connect to the outdoors. Designing this aspect of the multi-purpose room was fully intentional and a defining characteristic of the school culture. The adjacent ready room has a full kitchen, which accommodates preparation for outdoor activities as well as daily meal requirements.

There is also a grand outdoor structure attached to the building, allowing activities in adverse weather, including an integrated rock-climbing wall.



HELMAN ELEMENTARY SCHOOL



CURRENT ACTIVITIES

The construction of this building has a net reduction in the school's energy use that truly models the Ashland School District's adoption of the City of Ashland's Climate and Energy Action Plan (CEAP). The new classroom building also includes a SPED instructional space with exterior play area, sensory room with state-of-the-art furnishings, a large multipurpose room with an operable exterior wall and multiple breakout spaces scattered throughout the building.

The front administration area underwent a full renovation that included an access-controlled entry. New reception area, conference room and staff work room concluded the new spaces included in the administration area.

Campus wide, a new 4-Pipe hydronic HVAC system that includes new high efficiency boilers, new air handlers and a new chiller was installed. A new building controls system, allowing the district to operate the new systems as efficiently as possible and minimize any maintenance or troubleshooting delays, was also included. The campus also received a new fire alarm system bringing everything up to current building codes.

On the exterior of the site, a new entry drive was installed that will aid with traffic congestion during high traffic periods. Additional parking was installed at the south end of the campus. There is a brand new 1/8th mile walking track and new playground that is accessible to all. New landscaping wraps up the remainder of the campus.

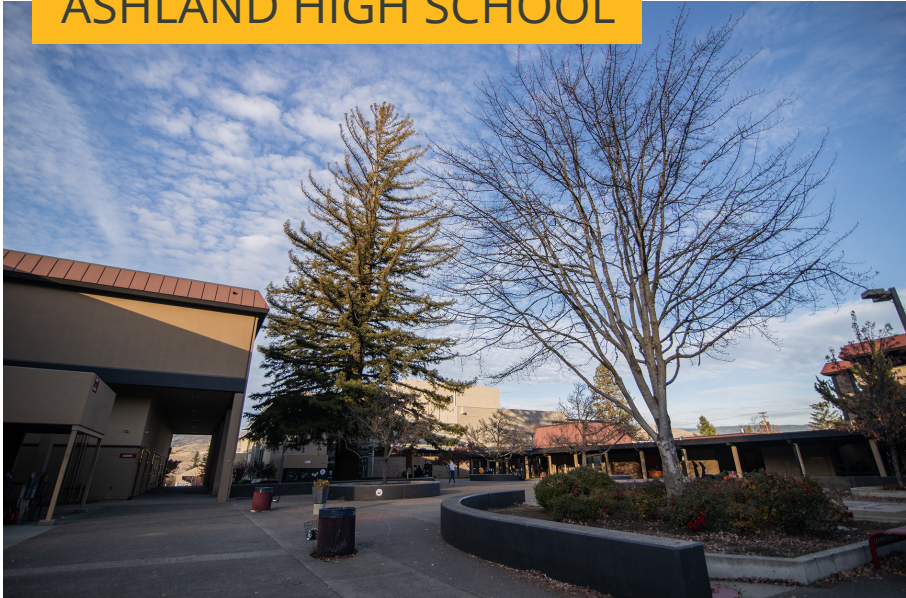


ACTIVITIES SCHEDULED FOR NEXT PERIOD

- Continued Commissioning.





ASHLAND HIGH SCHOOL**CURRENT ACTIVITIES**

In January the focus on this project was procuring a Construction Manager | General Contractor (CM|GC) to be brought into the project team. The selection committee met on January 26th to score the three proposals that were received from prospective firms. From this process, invitations to interview were extended to two of the firms. The interviews are slated to take place in February.

**ACTIVITIES SCHEDULED FOR NEXT PERIOD**

- Construction Manager | General Contractor (CM|GC) Interviews

WALKER ELEMENTARY SCHOOL**CURRENT ACTIVITIES**

Courtyard work is progressing rapidly with nearly all concrete flatwork complete. Structural steel walkways and canopies are in the final stages of erection. Landscaping has begun to fill parking lot planters, and final steps in retention wall construction is underway.



The majority of paint work has been completed and finish work including installation of bathroom tile, ceiling tile, casework, countertops and plumbing/electrical finish is underway. Mechanical, electrical and plumbing are nearly ready for the commissioning process to begin, signifying the nearing of project substantial completion.

ACTIVITIES SCHEDULED FOR NEXT PERIOD

- Commissioning
- Landscaping
- Casework/Countertops
- Stucco
- Fencing

**COURTYARD
CANOPIES AND
FLATWORK**



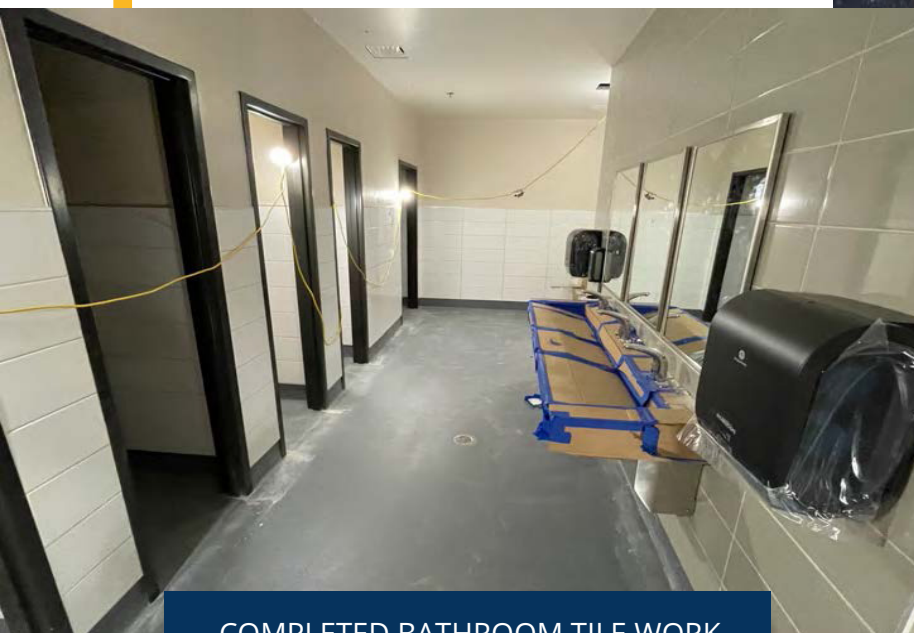
IRRIGATION AND
LANDSCAPE PROGRESS

HIGHLIGHTS

- Paint progress
- Connection to permanent power
- Gym progress

CHALLENGES

- Cold and/or wet weather
- Labor shortage
- Material lead times



COMPLETED BATHROOM TILE WORK

The following list of local vendors who are currently working on the projects.

ASHLAND AREA VENDORS AND CONTRACTORS (DEFINED AS ROGUE VALLEY)

- Arkitek:design&architecture
- Adroit Construction Co.
- Ciota Engineering
- DOBRIN
- Covey Pardee Landscape Architecture
- Infinity Electric
- Douglas Engineering Pacific
- Van Row Mechanical
- HMK Company
- Cascade Communications
- KenCairn Landscape Architecture
- Quality Fence
- Bean Electric
- Pacific 3D Reality Capture
- Renfro
- Pariani Land Surveying
- Britannia
- Powell Engineering
- Patriot Landscaping
- ZCS Engineering & Architecture
- Sandeen Masonry
- Beflor
- Alco
- Top Notch
- Quality Fence
- S&S Sheetmetal
- Metal Masters
- Urban Racks
- Moore Construction
- Curtis Huntley
- Devry
- Cut N' Break
- Precision Electric
- Advanced Air
- Welburn Electric
- Hall of Fame Moving
- New Horizons Woodworks
- Milestone Landscape

