



Ashland School District  
*inspiring learning for life*



NOVEMBER 2022

# BOND NEWSLETTER

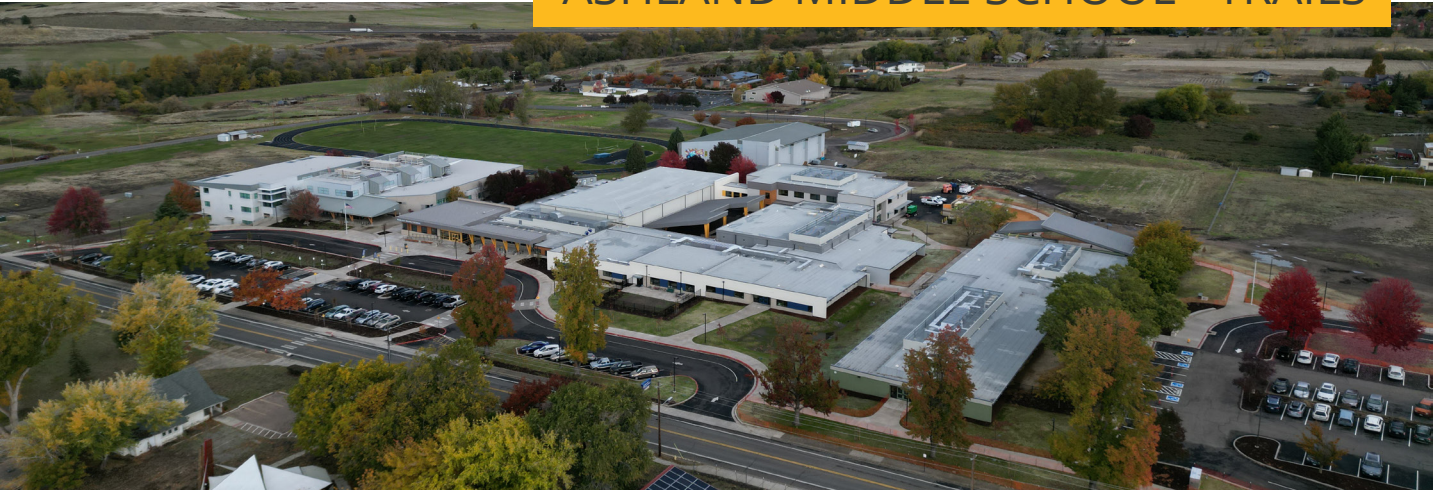
## GENERAL PROGRAM UPDATE

At Walker Elementary, the work began on the gym seismic project. Over at AMS and Helman the focus was on wrapping up the punchlist and commissioning. Most of the excitement was at TRAILS, as the last pieces of the project were completed, furniture was delivered and installed and the move in process began. For District Wide projects, the Maintenance and Transportation buildings are in the middle of some much needed HVAC upgrades.



WALKER ELEMENTARY SCHOOL  
RENOVATION AND ADDITION, AERIAL VIEW

## ASHLAND MIDDLE SCHOOL +TRAILS

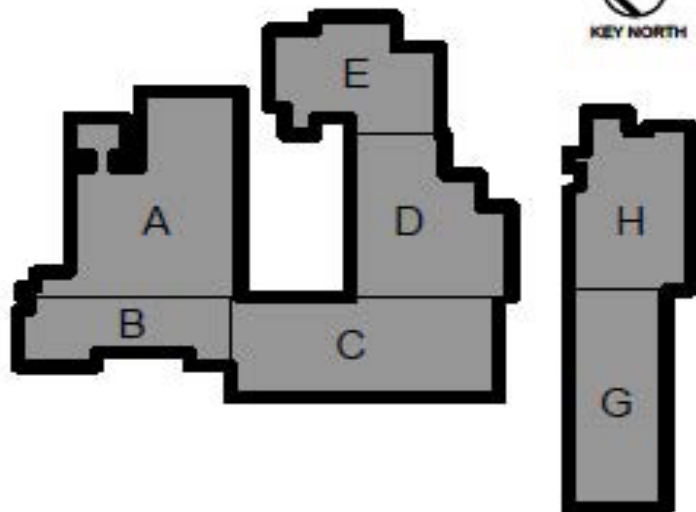


### CURRENT ACTIVITIES

- **Building A, Gym/Locker Rooms** – This area is the final portion of Ashland Middle School to have work completed. The gym construction work is finished and final cleaning is under way. The gym is expected to be turned over to the District on November 7th allowing student activities in this area to resume.

- **Ashland Middle School** – Fire safety related updates continue to progress in this otherwise fully operational campus. Final commissioning and user training continue to progress for various systems in the new facility as part of the project completion process.

KEY PLAN



- **Building G/H, TRAILS** – The building is complete with all new furniture installed as of October 27th. Movers are transferring staff belongings which will be unpacked starting October 31st, when teachers begin to move into their brand-new spaces. Students return to the campus on November 7th for their first day back to school in the revitalized TRAILS Outdoor School building.

- **Site Work** – Finish work on site lighting, transportation, landscaping, and irrigation are nearly complete throughout the campus including hydroseed of lawn areas and striping of parking lots.

### ACTIVITIES SCHEDULED FOR NEXT PERIOD

- Occupancy of TRAILS by students and staff, final testing and balancing of the HVAC system, training and owner turnover for commissioning.



COMPLETED FURNITURE  
INSTALL AT THE TRAILS LIBRARY

THE TRAILS MULTI-  
PURPOSE ROOM IS  
READY FOR USE



## HIGHLIGHTS

- TRAILS is ready for occupancy
- Trees, plants and ground coverings are establishing well in the recently wetter conditions
- AMS will have their middle gym and wrestling room back in service in perfect time to accommodate physical activities for the winter season



THE ASHLAND MIDDLE SCHOOL GYM  
IS ALMOST BACK IN SERVICE



## HELMAN ELEMENTARY SCHOOL



### CURRENT ACTIVITIES

The construction of this building has a net reduction in the school's energy use that truly models the Ashland School District's adoption of the City of Ashland's Climate and Energy Action Plan (CEAP). The new classroom building also includes a SPED instructional space with exterior play area, sensory room with state-of-the-art furnishings, a large multipurpose room with an operable exterior wall and multiple breakout spaces scattered throughout the building.

The front administration area underwent a full renovation that included an access-controlled entry. New reception area, conference room and staff work room concluded the new spaces included in the administration area.

Campus wide, a new 4-Pipe hydronic HVAC system that includes new high efficiency boilers, new air handlers and a new chiller was installed. A new building controls system, allowing the district to operate the new systems as efficiently as possible and minimize any maintenance or troubleshooting delays, was also included. The campus also received a new fire alarm system bringing everything up to current building codes.

On the exterior of the site, a new entry drive was installed that will aid with traffic congestion during high traffic periods. Additional parking was installed at the south end of the campus. There is a brand new 1/8th mile walking track and new playground that is accessible to all. New landscaping wraps up the remainder of the campus.



### ACTIVITIES SCHEDULED FOR NEXT PERIOD

- Continued Commissioning.



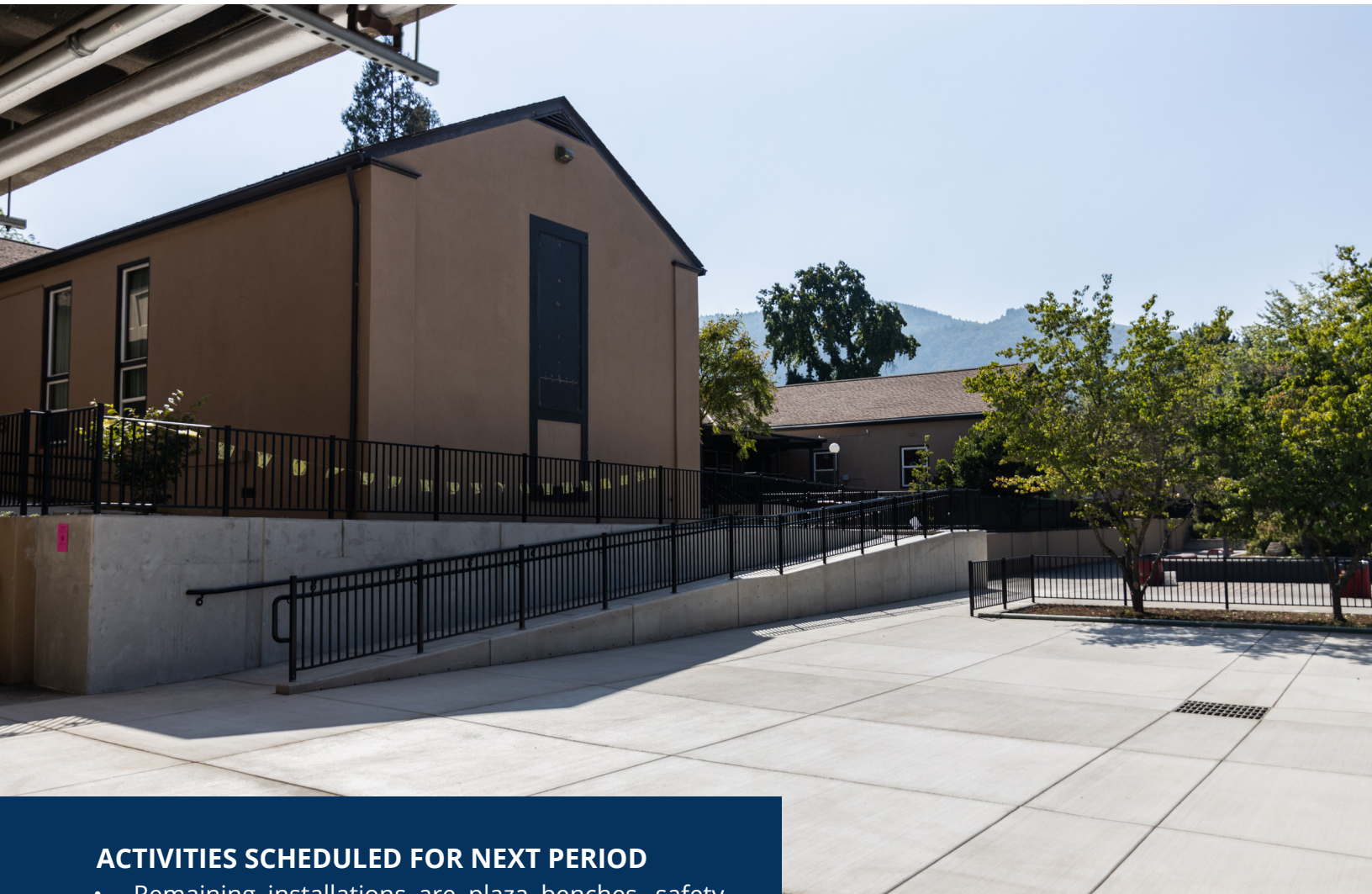


## ASHLAND HIGH SCHOOL - ADA COMMONS UPGRADE



### CURRENT ACTIVITIES

The ADA Commons project achieved substantial completion September 1st, 2022. Stair remediation has been scheduled for the summer months of 2023, with the same builder. We are waiting for an updated schedule and full quote for stair remediation work.



### ACTIVITIES SCHEDULED FOR NEXT PERIOD

- Remaining installations are plaza benches, safety rail at the Siskiyou ramp and 18 trash receptacles.



## WALKER ELEMENTARY SCHOOL

**CURRENT ACTIVITIES**

The building is prepared for winter with roofing in place and a completed exterior weather barrier system. This allows interior work to continue without interruption. Paving of Hunter Court and the Southeast Parking lot are complete.



With addition of steel framed canopies and concrete block enclosures, the site layout is coming to life. Mechanical and electrical continue to progress both in the addition and renovated areas allowing further progress of finish work. The seismic retrofit work on the gymnasium is rapidly progressing, adding more depth to the improvement of this campus.

**ACTIVITIES SCHEDULED FOR NEXT PERIOD**

- Installation of window glass and subsequent window testing.
- Completion of sheetrock, finish and painting.
- Installation of grid ceiling and hardlid.
- Gymnasium structural upgrades.



AERIAL IMAGE OF THE CAMPUS  
REVEALING THE NEW PARKING LOT



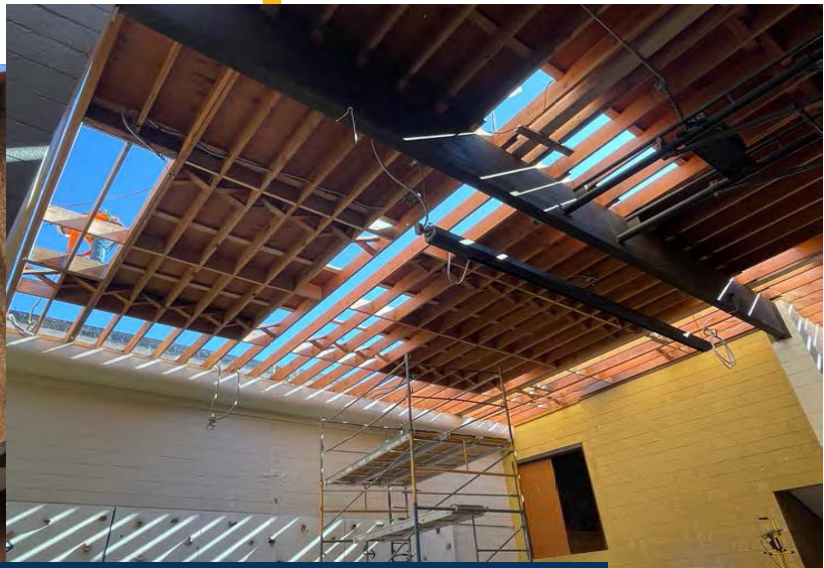
EXTERIOR INSULATION AND NEW  
ROOF AT ADDITION

## HIGHLIGHTS

- Progress on the gymnasium seismic retrofit.
- Completion of the parking lot.
- Beginning of landscape and fencing layout.
- Addition of finish work including casework.

## CHALLENGES

- Rapid changes in weather.
- Addition of finish work including casework.



REPLACEMENT OF SELECT STRUCTURAL MEMBERS  
AND ROOF AT MUSIC ROOM / GYM

The following list of local vendors who are currently working on the projects.

**ASHLAND AREA VENDORS AND CONTRACTORS  
(DEFINED AS ROGUE VALLEY)**

- Arkitek:design&architecture
- Adroit Construction Co.
- Ciota Engineering
- DOBRIN
- Covey Pardee Landscape Architecture
- Infinity Electric
- Douglas Engineering Pacific
- Van Row Mechanical
- HMK Company
- Cascade Communications
- KenCairn Landscape Architecture
- Quality Fence
- Bean Electric
- Pacific 3D Reality Capture
- Renfro
- Pariani Land Surveying
- Britannia
- Powell Engineering
- Patriot Landscaping
- ZCS Engineering & Architecture
- Sandeen Masonry
- Beflor
- Alco
- Top Notch
- Quality Fence
- S&S Sheetmetal
- Metal Masters
- Urban Racks
- Moore Construction
- Curtis Huntley
- Devry
- Cut N' Break
- Precision Electric
- Advanced Air
- Welburn Electric
- Hall of Fame Moving
- New Horizons Woodworks

