



Ashland School District
inspiring learning for life



SEPTEMBER 2022

BOND NEWSLETTER

GENERAL PROGRAM UPDATE

August focused on getting things buttoned up so that staff and students could get back into the schools. The High School ADA Commons upgrade was completed, Ashland Middle School finished up and Helman Elementary wrapped up just in time for students to return. At Walker Elementary, finishes are being installed in the renovation area and rough in continues at the new addition. Furthermore, the Walker Gym Seismic project is close to being contracted for work to begin this fall.



HELMAN ELEMENTARY NEW FRONT
ENTRY AND PARKING LOT

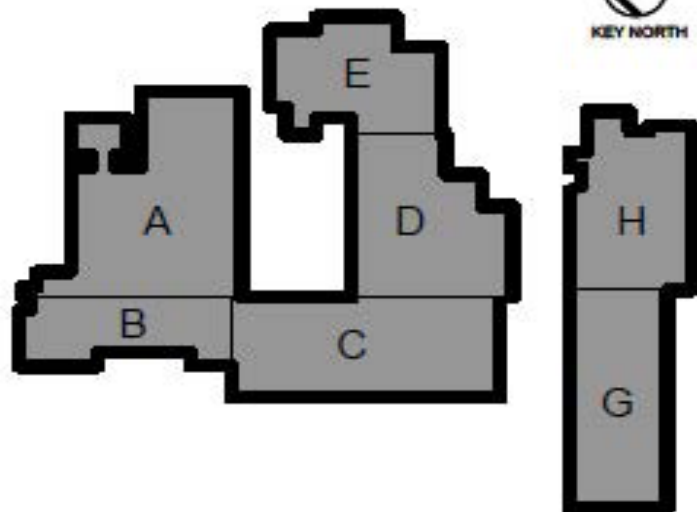
ASHLAND MIDDLE SCHOOL + TRAILS

CURRENT ACTIVITIES

- **Building A, Gym/Locker Rooms** – Work in the gym was delayed while resources were allocated to other parts of the school in an effort to push for staff and students to be moved in by the start of the school year. Final electrical, fire alarms and sound systems are nearly complete. Some finish trim, door installation and paint will conclude work in this area near the end of September.
- **Building A, Kitchen** – The kitchen is complete and fully operable. The first day serving breakfast and lunch on 8/31 was a success.
- **Ashland Middle School** – The new/renovated school is occupied by staff and students as of 8/30. The push to complete construction in all critical areas has proved to be a worthwhile effort. Staff and students are thoroughly enjoying the new spaces including new fixtures and furniture while project managers and contractors strive to resolve any remaining punch list items to fully accommodate the new occupants.



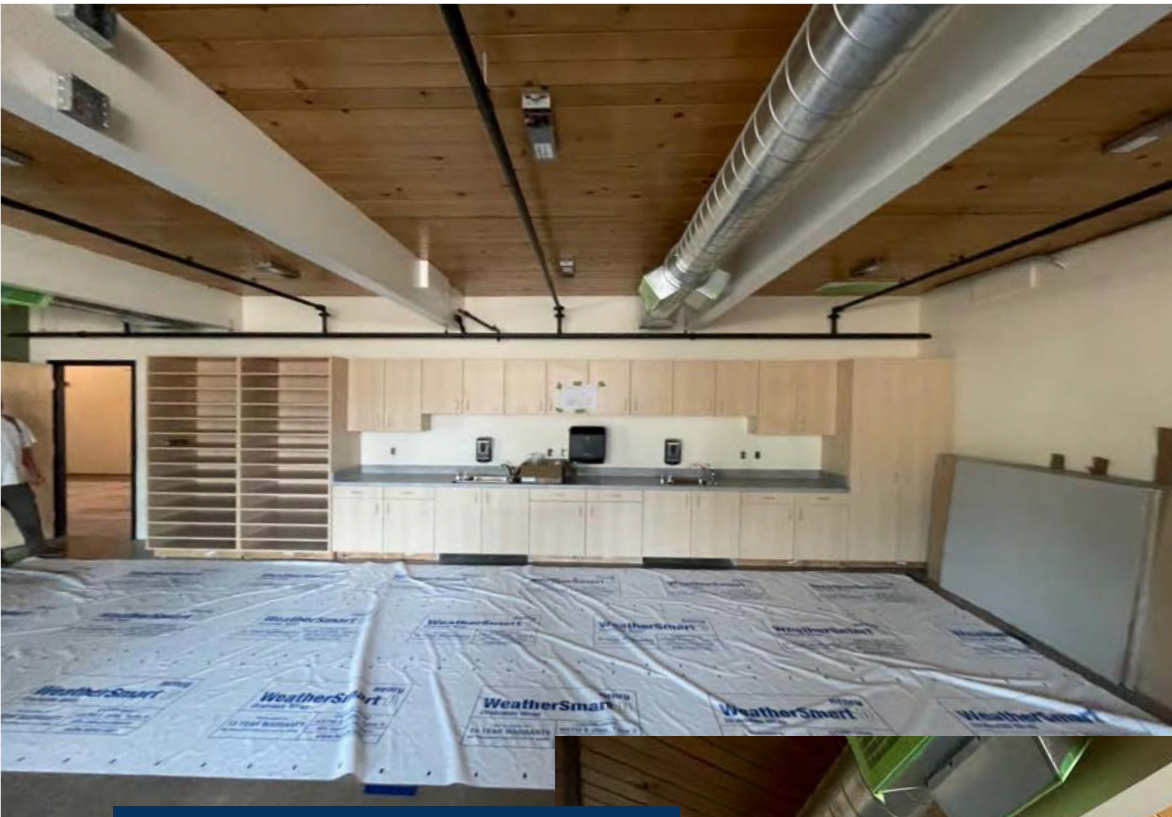
KEY PLAN



- **Building G/H, TRAILS** – Finish paint has concluded, and casework is near completion throughout TRAILS. Finish electrical and plumbing are in work signifying that the readiness for occupancy is near. Finish carpentry, isolated areas of flooring and grid ceiling will commence next providing the final work to be completed. Worth noting is the active progress on the rock-climbing wall which should also conclude this month. The outdoor activity space will prove to be invaluable.
- **Site Work** – Asphalt and concrete areas of travel are complete. Landscape is complete at the middle school and in its final stages at TRAILS. Installation of reclaimed glulam benches has proven to be a prized asset to the project. Upon installation of light poles, the site work through both campuses will be complete.

ACTIVITIES SCHEDULED FOR NEXT PERIOD

- Final testing and balancing of the HVAC system, finish irrigation/landscaping, system training and owner turnover progressions.



INSTALLED CASEWORK AND
FINISH PLUMBING



HIGHLIGHTS

- Staff and students are occupying AMS
- TRAILS is rapidly progressing with apparent signs of completion
- Landscape is installed and establishing, presenting a beautiful campus overall

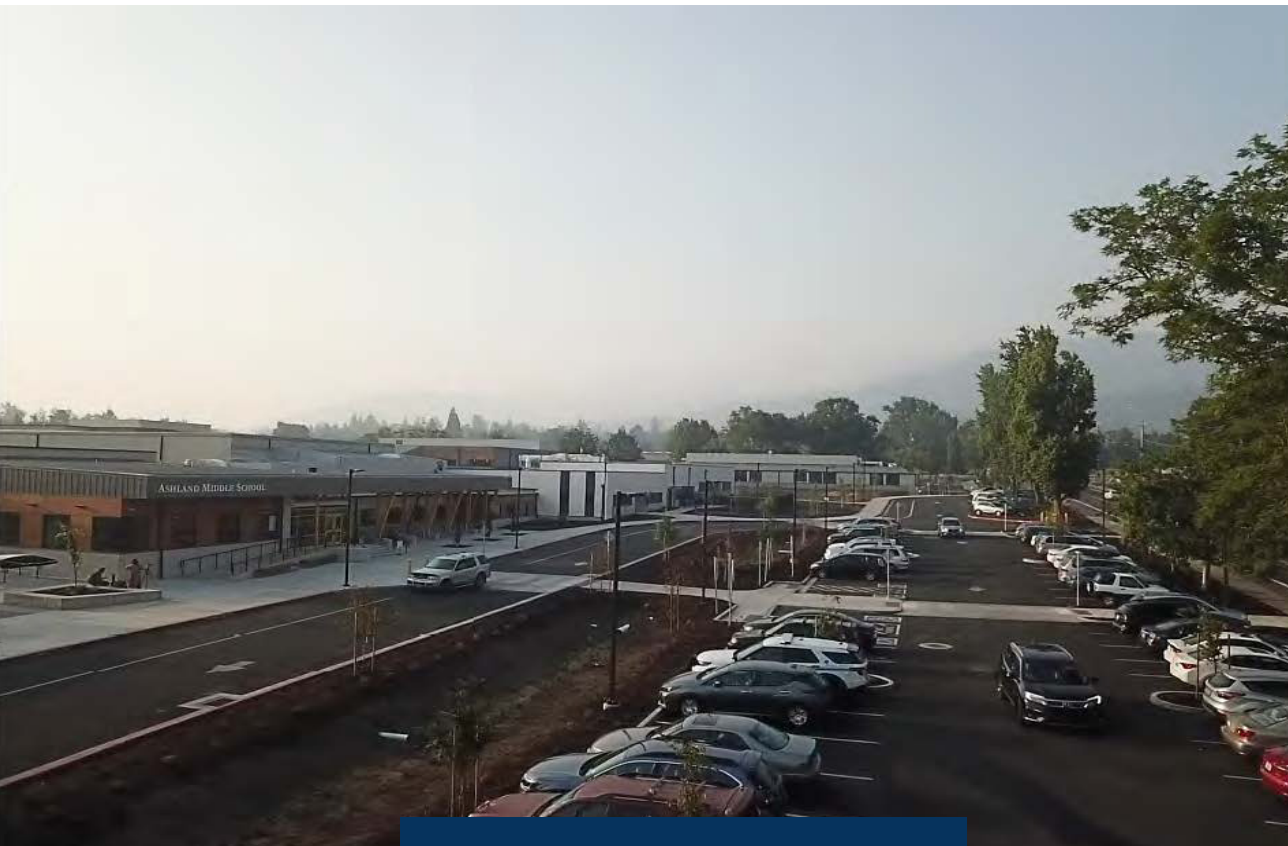


TRAILS: COMPLETED PAINT, TILE AND
EPOXY FLOORING IN RESTROOMS



ASHLAND MIDDLE SCHOOL FRONT ENTRANCE





STUDENTS HAVE ARRIVED AT
ASHLAND MIDDLE SCHOOL



CURRENT ACTIVITIES

In August, the focus was on wrapping up the renovation area in preparation for school to begin. Landscaping was one of the major focuses. Irrigation was completed, topsoil was imported, and the new plants were placed. The electricians worked to finalize the lighting, access control and building controls. The casework and finishes were completed in the administration area and the school was able to occupy the building. Fencing was installed and the overall site was cleaned up. There are some remaining punch list items and the hydroseeding of the major grass area will be completed in October when the weather is more conducive. Overall, this project is complete aside from some minor items.

HELMAN ELEMENTARY SCHOOL



ACTIVITIES SCHEDULED FOR NEXT PERIOD

- Final punch list items.

RELOCATED/SALVAGED MURAL INSTALLED

LANDSCAPE PLANTINGS BEING INSTALLED AT NEW COURTYARD



HIGHLIGHTS

- The school moved into the renovated buildings.

ASHLAND HIGH SCHOOL - ADA COMMONS UPGRADE



CURRENT ACTIVITIES

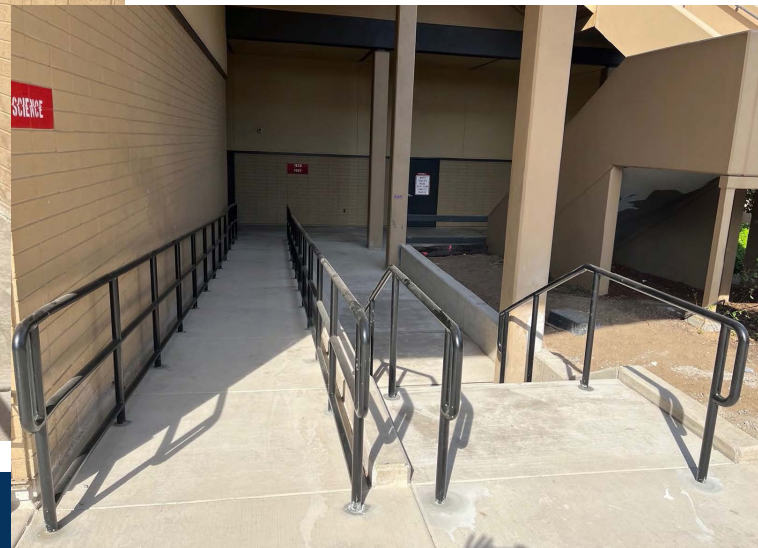
August was the final stretch to project completion. Many activities were finalized, including repaving parking-lot F, application of rails to the west portion of the Science building ramp and concrete stairs, and installation of rails at the Siskiyou ramp. Additionally, the placement of concrete ramps, stairs, and railing in several locations including east of the Science building and the alley between the English and Humanities building, as well as placement of concrete sidewalks and stairs south of the Humanities building and concrete ramp landings at the English courtyard were completed. Lastly, repaving a portion of parking-lot E and installation of landscaping and irrigation across the campus rounded out the completion of work.

The remaining tasks left are final punch list walk, demobilization of Adroit's trailer and final clean up.

ACTIVITIES SCHEDULED FOR NEXT PERIOD

- The submission of warranties, Operation & Maintenance Manuals (O&M's)

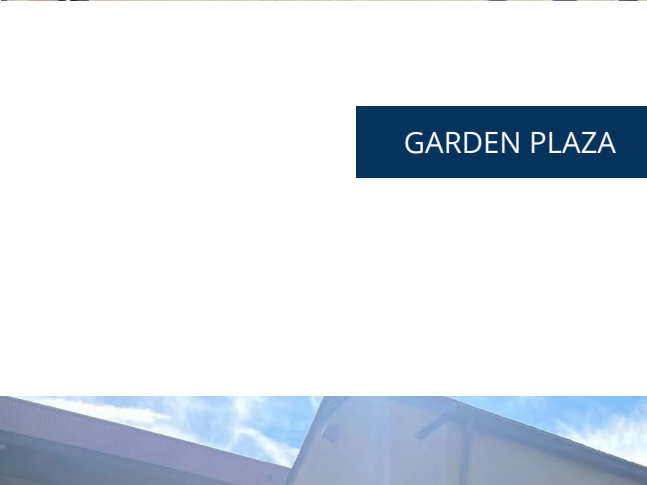
WEST SCIENCE BUILDING RAMP AND STAIRS



NORTHEAST SCIENCE BUILDING RAMP AND STAIRS



SISKYOU RAMP



GARDEN PLAZA



SIDEWALK AND ADA RAMP
AT ENGLISH BUILDING

HIGHLIGHTS

- Demobilization

CURRENT ACTIVITIES

Site work progress includes Hunter Ct. sidewalk and roadway renovations and parking lot / courtyard footings and grade work. Window openings area ready for window installation and delivery is expected in the coming weeks. Roof work is under way with anticipated completion by the end of the month. Installation of windows and completion of weather barrier and roofing will ensure no weather delays this fall/ winter. Installation and testing of the HVAC systems is continuing to progress.

Finish paint and installation of casework are showing signs of completion in the renovated areas.

Installation of sheetrock in the cafeteria and kitchen areas provides definition of these areas and the final magnitude of the rooms.

WALKER ELEMENTARY SCHOOL



COMPLETION OF SHEETROCK INSTALLATION
AT CAFETERIA AND KITCHEN AREAS



ACTIVITIES SCHEDULED FOR NEXT PERIOD

- Concrete pour and paving throughout the site.
- Installation and testing of windows.
- Phase 3, Gym seismic renovation work is scheduled to commence this month.
- Restoration of stucco exterior on renovated building.



INSTALLED CASEWORK IN
RENOVATED CLASSROOMS

HIGHLIGHTS

- Completion of Phase 3 gym seismic renovation design.
- Completion of weather barrier and advancement of roofing to ensure no project delays due to adverse weather conditions.
- Approval and progress of Hunter Ct. / parking lot site work.

COMPLETED WEATHER BARRIER AND FOOTING INSULATION AT THE ADDITION



The following list of local vendors who are currently working on the projects.

ASHLAND AREA VENDORS AND CONTRACTORS (DEFINED AS ROGUE VALLEY)

- Arkitek:design&architecture
- Adroit Construction Co.
- Ciota Engineering
- DOBRIN
- Covey Pardee Landscape Architecture
- Infinity Electric
- Douglas Engineering Pacific
- Van Row Mechanical
- HMK Company
- Cascade Communications
- KenCairn Landscape Architecture
- Quality Fence
- Kistler+Small+White Architects
- Bean Electric
- Pacific 3D Reality Capture
- Renfro
- Pariani Land Surveying
- Britannia
- Powell Engineering
- Patriot Landscaping
- ZCS Engineering & Architecture
- Sandeen Masonry
- Beflor
- Alco
- Top Notch
- Quality Fence
- Sandeen Masonry
- S&S Sheetmetal
- Metal Masters
- Urban Racks
- Moore Construction
- Curtis Huntley
- Devry
- Cut N' Break
- Precision Electric
- Advanced Air
- Welburn Electric

