



Ashland School District  
*inspiring learning for life*

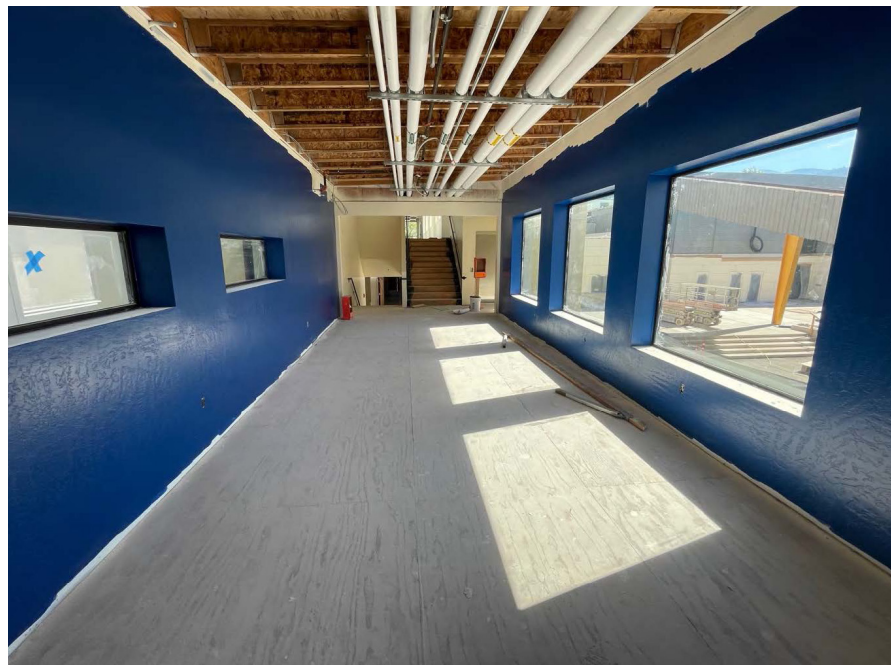


AUGUST 2022

# BOND NEWSLETTER

## GENERAL PROGRAM UPDATE

July marked one of the busiest months to date for the bond projects. AMS is on the last push for completion with TRAILS close behind. The High School ADA Commons upgrade is well underway with the much needed ADA upgrades starting to take shape. Helman Elementary is also on the last push for completion with most of the work focused at the front of the school in the Administration area and Quad C. Walker Elementary is continuing in construction and is moving along on schedule.



ASHLAND MIDDLE SCHOOL SKYBRIDGE  
INTERIOR FINISH PROGRESS

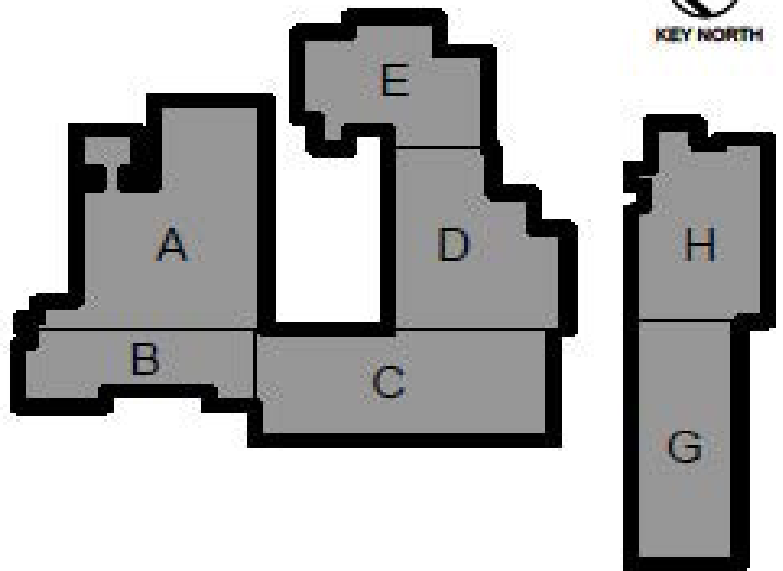
## ASHLAND MIDDLE SCHOOL + JOHN MUIR OUTDOOR SCHOOL

### CURRENT ACTIVITIES

- **Building A, Gym/Locker Rooms** – Completion of most interior finishes including paint and flooring. Finish electrical, fire alarms and sound systems are being installed.
- **Building A, Kitchen** – Rough plumbing and electrical are complete and the new kitchen hood is installed. The new built-up roof and installation of skylights is nearly complete.
- **Building B, Administration** – Flooring, casework, countertops, and finish details are complete in this area. Finish electrical including lights are also complete. Final cleaning is underway.
- **Building C, Special Education** – Visual display boards throughout and new appliances are being installed. Bathroom fixtures will be the final work to complete this area.
- **Building D, Media Center** – Casework, countertops, reception desks and flooring are complete. Visual display boards, sounds panels and floor electrical are in work. Testing and balancing of mechanical systems is underway.
- **Building E, 6th Grade Wing** – Ceilings are near completion. Bathroom partitions, mirrors and other lavatory accessories are being installed. Installation of appliances and lockers is also under way. Testing and balancing of mechanical systems is underway.
- **Building G/H, TRAILS** – Interior paint and polished concrete floors are nearly complete. Finish electrical and countertops are being installed. Sinks will be set in the coming week. Bike racks and skateboard lockers are installed.
- **Site Work** – Flag poles are installed. Various asphalt of parking/traffic ways is complete. Irrigation and landscape are advancing with planting scheduled in two weeks.



KEY PLAN



### ACTIVITIES SCHEDULED FOR NEXT PERIOD

- Continued energizing of the electrical system, testing, and balancing of the HVAC system, irrigation/landscaping, final interior finishes and cleaning of all areas.



POLISHED CONCRETE FLOORS  
AND CASEWORK



BUILDING C BATHROOM  
NEARLY COMPLETE

TRAILS EXTERIOR PAINT AND BIKE  
RACKS / SKATEBOARD LOCKERS



## HIGHLIGHTS

- Power is on in nearly all areas.
- Irrigation and landscaping and planting are under way.
- All flooring and paint are near completion.



## HELMAN ELEMENTARY SCHOOL

### CURRENT ACTIVITIES

In July, sitework continued at the new front entry area. This includes the excavation and construction of an additional covered bike canopy, installation of underground hydronic lines, excavation of and beginning of construction on the new ADA entry ramp and pour back of the replaced east parking lot subgrade and asphalt. In the administration area the new layout has painting completed, doors and windows installed, and the team is working through trim out of the plumbing and electrical. The exterior perimeter fencing and landscape irrigation are being installed.



### ACTIVITIES SCHEDULED FOR NEXT PERIOD

- Finishes in the Administration area.
- Completion of the site work.

REPLACED ASPHALT AT  
EAST PARKING LOT

FRONT ENTRY WAY ADA  
RAMP BEING FORMED



### HIGHLIGHTS

- East parking Lot Asphalt Installed
- Irrigation and Topsoil Installed at Landscape



## ASHLAND HIGH SCHOOL - ADA COMMONS UPGRADE



### CURRENT ACTIVITIES

July at AHS marked a lot of progress on the demo and flat work on this project. The Siskiyou ramp was graded, formed, poured and is now awaiting guard rails. The sunken plaza had the storm water system installed and was backfilled and poured with concrete. Demo has started on the parking lot on the west side of the science building. The flat



SUNKEN PLAZA FILLED IN AND GETTING CONCRETE FINISHED

### HIGHLIGHTS

- Ramps and flat work being completed
- Sunken Plaza was filled in

### ACTIVITIES SCHEDULED FOR NEXT PERIOD

- The upcoming work consists of completion of all the flat work, landscaping, asphalt, and rails.



NORTHWEST CORNER OF SCIENCE BUILDING RAMP STEM WALLS



## CURRENT ACTIVITIES

Service yard footings have been poured, outlining some of the block wall locations directly opposing the new addition and adjacent to the playground. This work, coupled with sheathing of Sector A walls, has brought definition to the grand size of the courtyard. Window openings are framed in allowing for final dimensions to be relayed to the window manufacturer, which is an exciting step in the process of getting a watertight building well before fall weather. Delivery of the air handler units is on the shortterm schedule which will allow for completion of the basement and entry way at the North end of the building. Interior paint is being applied in some of the more completed areas alongside ceiling installation/painting. HVAC systems are on site and being installed in corridors and classrooms.

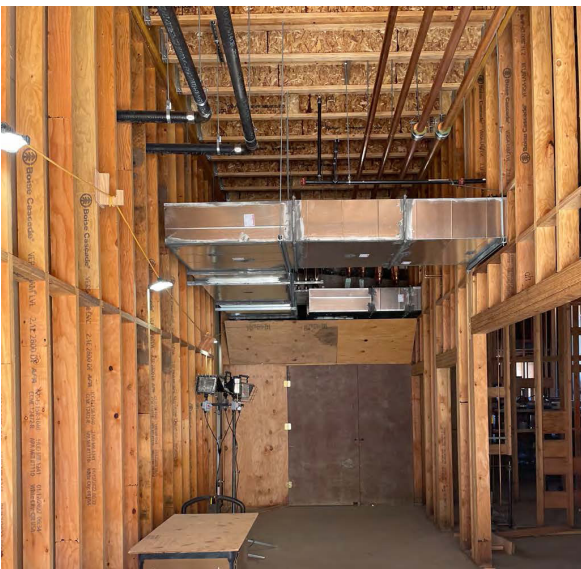


ILLUSTRATION OF HVAC, FIRE SUPPRESSION AND PLUMBING IN THE CORRIDOR JOINING EXISTING AND ADDITION

## WALKER ELEMENTARY SCHOOL



## ACTIVITIES SCHEDULED FOR NEXT PERIOD

- Roofing/flashing above the new addition
- Weather barrier at building exterior including window openings
- Design Development of Phase 3, Gym seismic renovation



EXTERIOR ELEVATION VIEWS OF ADDITION DEPICTING COMPLETION OF FRAMING/SHEATHING AND FOUNDATION INSULATION

## HIGHLIGHTS

- Confirmed delivery of air handler units ahead of schedule
- Finalization of memorandum of agreement with Oregon State Historic Preservation Office requirements for on-site representation of Walker Elementary History
- Near completion of building addition framing and sheathing

The following list of local vendors who are currently working on the projects.

#### ASHLAND AREA VENDORS AND CONTRACTORS (DEFINED AS ROGUE VALLEY)

- Arkitek:design&architecture
- Adroit Construction Co.
- Ciota Engineering
- DOBRIN
- Covey Pardee Landscape Architecture
- Infinity Electric
- Douglas Engineering Pacific
- Van Row Mechanical
- HMK Company
- Cascade Communications
- KenCairn Landscape Architecture
- Quality Fence
- Kistler+Small+White Architects
- Bean Electric
- Pacific 3D Reality Capture
- Renfro
- Pariani Land Surveying
- Britannia
- Powell Engineering
- Patriot Landscaping
- ZCS Engineering & Architecture
- Sandeen Masonry
- Beflor
- Alco
- Top Notch
- Quality Fence
- Sandeen Masonry
- S&S Sheetmetal
- Metal Masters
- Urban Racks
- Moore Construction
- Curtis Huntley
- Devry
- Cut N' Break
- Precision Electric
- Advanced Air
- Welburn Electric

