



Ashland School District
inspiring learning for life



JANUARY - MARCH 2022
QUARTERLY SUMMARY

JANUARY

In January, Helman Elementary's new addition was completing final tasks, before students moved in the first week of February. Ashland Middle School + JMOS continued with finishes, including painting throughout. Walker Elementary School is making great progress, with site clearing and beginning forming foundations and site utilities for the new parking lot. Ashland High School documents were issued for bidding, with bids due early February. Finally, the District-Wide HVAC projects were issued to bidders with bids due in February.

Program Updates



JMOS CEILINGS CLEANED AND SEALED

FEBRUARY

February was a momentous milestone in the bond program, with students starting the second week of February in the new building at Helman Elementary School. Ashland Middle School and Ashland Outdoor School is continuing to progress through finishes. Ashland High School received the GMP from Gerding Builders and Walker Elementary School's new addition progressed with concrete foundations. Finally, Maintenance and Transportation projects bid and contracts were awarded to Outlier Construction.



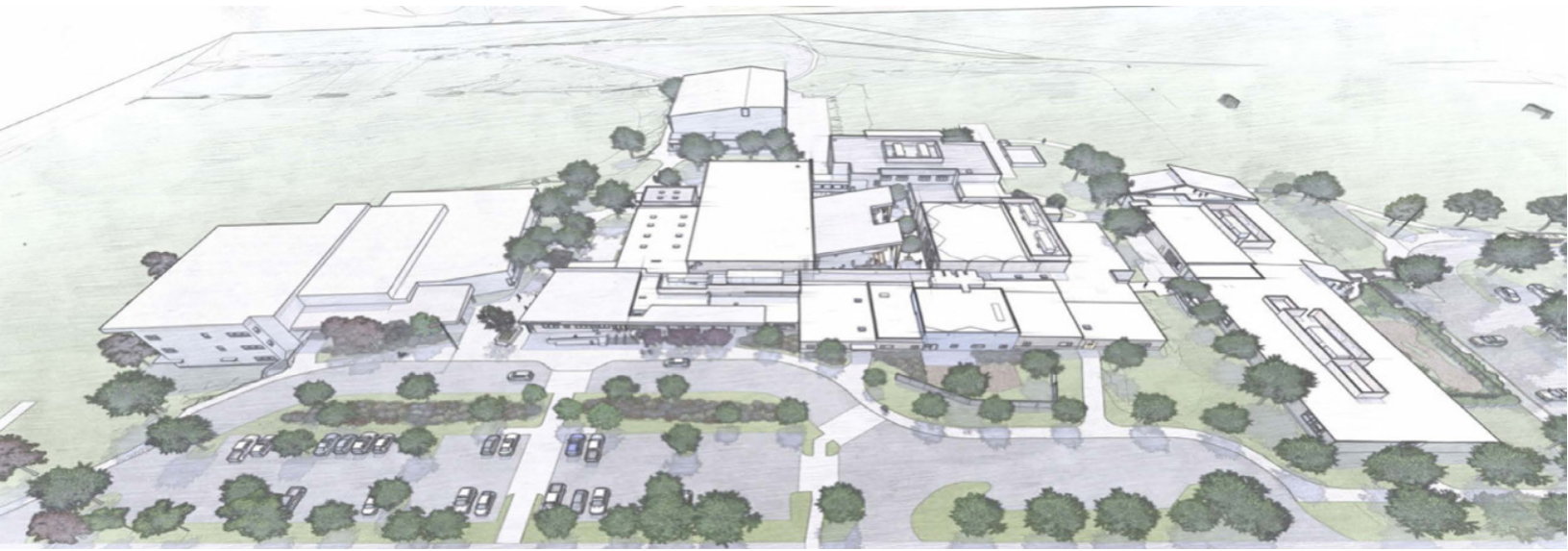
*BUILDING SLAB PREPARATION AT WALKER
ELEMENTARY SCHOOL NEW ADDITION*

MARCH

In March, significant progress continued at Ashland Middle School + JMOS, with mechanical unit installation on rooftops, concrete polishing and finishes throughout. Helman Elementary School phase II work continued, with demolition of Quad A. Walker Elementary School completed a major milestone with pouring the slab for the new addition. At Ashland High School, the design team was working to separate the ADA improvements around the campus to be bid in April. Additionally, HMK requested proposals for controls upgrades at the High School and Bellview Elementary School.



ASHLAND MIDDLE SCHOOL + JOHN MUIR OUTDOOR SCHOOL



CURRENT ACTIVITIES

JANUARY: Electrical, plumbing, HVAC were roughed in, in several areas. Insulation and sheetrock began in area C, while painting started in Building E and will continue from the 2nd floor down to the first floor. Once painting is complete, the ceilings will begin.



FEBRUARY: Progress throughout the month of February included E building being painted on the inside. Ceilings were 75% installed with MEP's trimming out right behind. Bathroom tile was completed, and flooring was in process of being installed. Exposed existing ceilings in JMOS and AMS wings were cleaned and in the process of being sealed. Asphalt was completed in the common courtyard area. The boiler room is nearing completion with only insulation, finishes and start up needed.



*JMOS MAIN PLAY AREA CANOPY AND ROOF*

MARCH

A major push right now is to complete the concrete polishing. Once that is complete, it enables all of the finishes to commence. Paint is moving quickly throughout all buildings as well as ceilings, tile, light fixtures, plumbing fixtures and much, much more.

ACTIVITIES SCHEDULED FOR NEXT PERIOD

- Focusing on JMos.
- Rough in inspections, insulation and sheetrock will begin.

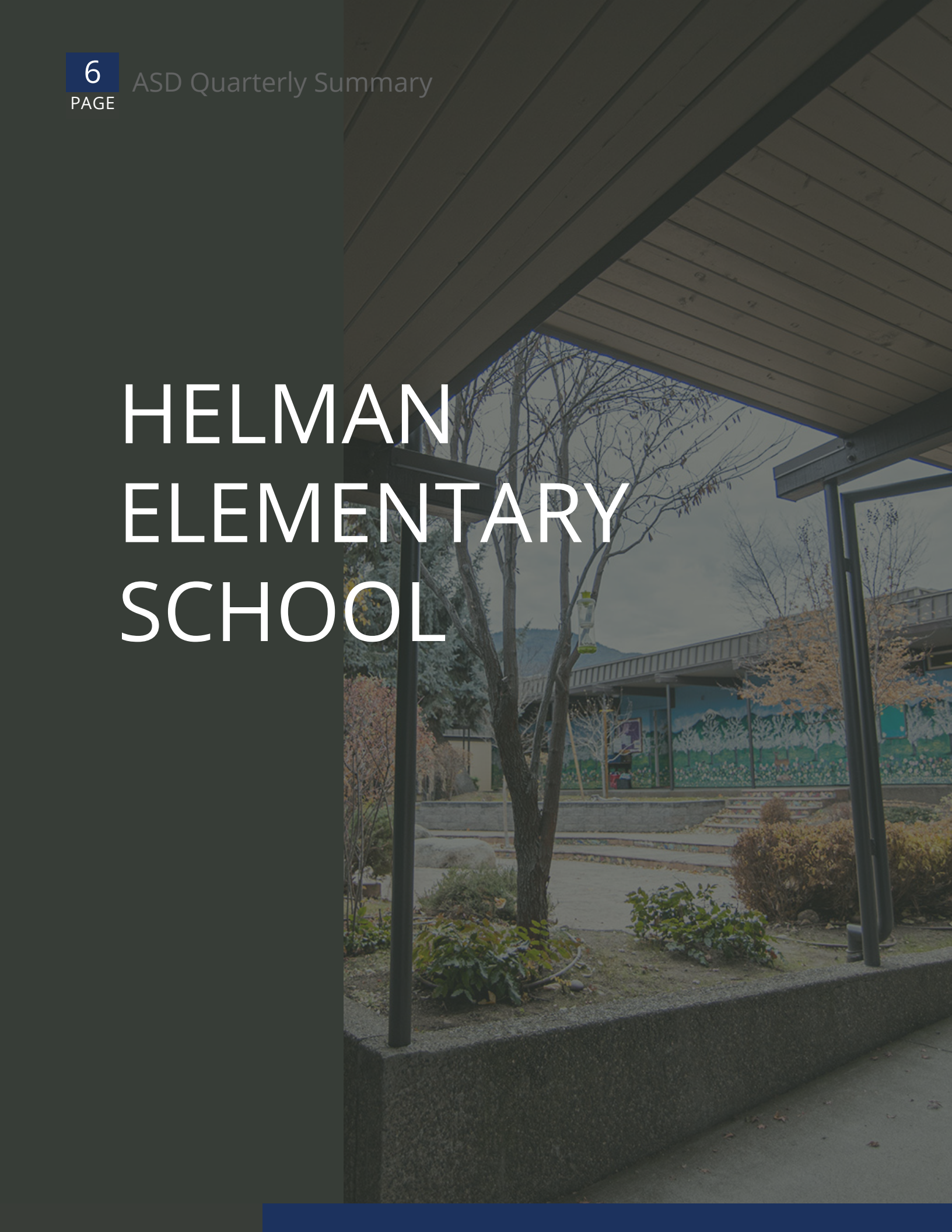
*AMS COURTYARD CANOPY GETTING PAINTED*

HIGHLIGHTS

- Starting to see the finishes go in, especially in the new 6th grade building, reminds us the end will be here before we know it.

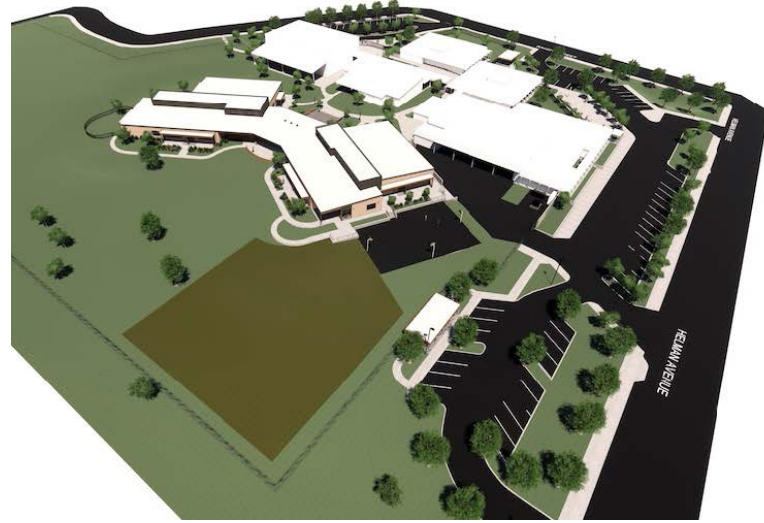
*HVAC UNITS ON THE ROOF*

HELMAN ELEMENTARY SCHOOL

The background image is a photograph of the exterior of Helman Elementary School. It shows a covered walkway with a wooden slat ceiling in the foreground. In the background, there is a building with a colorful mural of mountains and trees. A tree with bare branches stands in the middle ground, and a concrete planter with some greenery is in the immediate foreground. The sky is overcast.

JANUARY

Throughout January was the push towards the end to complete the new building. The new parking lot, basketball court and utility yard were all paved with asphalt. The siding components arrived and that portion neared completion. The playground was beginning to be installed. Inside the building, case work continued. Flooring and floor finishes were underway. All of the resilient carpet, polished concrete, and epoxy flooring was completed, and the installers worked to finish the marmoleum flooring. All of the lighting is now on, and the low voltage equipment was being tested out. Tackable wall surfaces were being installed. All of the furniture was onsite and waiting for the rooms to be finished to set them in place. The temporary modular building for the administrative staff was



NEW PARKING LOT AND BASKETBALL COURT



NEW MULTI PURPOSE SPACE

FEBRUARY

In February, the school moved into the new building. There was a major push to get all of the remaining items completed but the team was able to do it. A massive effort was put into moving the classes into their new spaces and clearing out Quad A and Quad B in preparation for abatement and demolition. There were still punchlist items being addressed as time allowed. The construction fencing was put up around the administration, Quad A and B. Abatement activities began and are ongoing. The demolition of the admin area is nearly complete.

MARCH

In March, the focus moved to the renovation portion of the project. This included all of the abatement for the Administration area, Quad A and Quad B. With abatement completed, the crews then moved to demolition and completely demolished both Quads A and B. The Administration area was also demolished internally in preparation for the new layout and upgraded HVAC. Underground plumbing and ducting were completed in the Admin area. The new chiller, which will serve the entire campus, was installed. At the new addition, punch list work continued. The landscaping was started with the first portion of irrigation installed.

ACTIVITIES SCHEDULED FOR NEXT PERIOD

- Framing in the new administration area.
- Site preparation for the new parking and front entry.



DEMOLITION OF QUAD A



NEW COVERED BIKE CANOPY

HIGHLIGHTS

- Chiller was installed.
- Quad A and B completely demolished.

ASHLAND HIGH SCHOOL



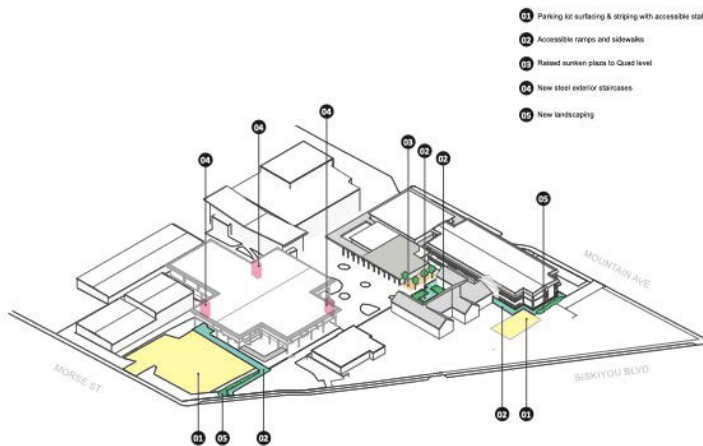
CURRENT ACTIVITIES

JANUARY

Bid packages went out in the month of January. Site walks were scheduled and bidders had a window of opportunity to ask questions before bid day.

FEBRUARY

Progress with Ashland High School included working on finalizing the GMP.



ACCESSIBILITY IMPROVEMENTS



ACTIVITIES SCHEDULED FOR NEXT PERIOD.

- Once the final details are complete, we will be preparing to advertise this portion of the project for bid.

MARCH

We are currently in the process of putting together a set of drawings and specs to move forward on a scope of work that will improve accessibility. This work is planned for this summer. ADA Ramps, Parking lot accessible stalls, and three new sets of stairs leading into the Science building.

WALKER ELEMENTARY SCHOOL





JANUARY

The work on the new addition began in the month of January. The new parking lot excavation and backfill was completed. This area will act as a laydown yard for a large portion of the project. The footprint of the new building addition was excavated, and the footings were just starting to get formed for concrete.

The mechanical, electrical, and plumbing sub-contractors began mobilizing onsite. Rough in will begin to occur in the renovation areas.



NEW BUILDING ADDITION EXCAVATION



POURING THE CONCRETE NEW ADDITION FOOTINGS

FEBRUARY

Site work continued on the new addition. Underground stormwater piping was in process of being installed. The new building footing was formed, had rebar installed and was poured with concrete. Inside the renovation area, the Mechanical, Electrical and Plumbing contractors are working on roughing in their boxes, conduits, hangers and piping. Also in the renovation area, the underground piping is being installed for the new restrooms and sinks.

MARCH

The rough in at the renovation is coming along nicely and the ducting has now been pressure tested. Underground plumbing in the renovation and new addition is complete. The major milestone this month was the completion of the footings and the start of pouring the concrete building slab. Around the rest of the site, the underground stormwater piping is being installed and trenching is beginning for some of the utility mains.



PRESSURE TESTING THE NEW MECHANICAL DUCTING

ACTIVITIES SCHEDULED FOR NEXT PERIOD.

- Steel Erection at the new building
- Insulation and Drywall at the renovation



NEW ADDITION CONCRETE PAD PREPARATION

HIGHLIGHTS

- New Building slab started being poured
- HVAC Ducting was pressure tested

The following list of local vendors who are currently working on the projects.

**ASHLAND AREA VENDORS AND CONTRACTORS
(DEFINED AS ROGUE VALLEY)**

- Arkitek:design&architecture
- Adroit Construction Co.
- Ciota Engineering
- DOBRIN
- Covey Pardee Landscape Architecture
- Infinity Electric
- Douglas Engineering Pacific
- Van Row Mechanical
- HMK Company
- Cascade Communications
- KenCairn Landscape Architecture
- Quality Fence
- Kistler+Small+White Architects
- Bean Electric
- Pacific 3D Reality Capture
- Renfro
- Pariani Land Surveying
- Britannia
- Powell Engineering
- Patriot Landscaping
- ZCS Engineering & Architecture
- Sandeen Masonry
- Beflor
- Alco
- Top Notch
- Quality Fence
- Sandeen Masonry
- S&S Sheetmetal
- Metal Masters
- Urban Racks
- Moore construction
- Curtis Huntley
- Devry
- Cut N' Break
- Precision Electric
- Advanced Air
- Welburn Electric

