



Ashland School District  
*inspiring learning for life*



MARCH 2022

# BOND NEWSLETTER

## GENERAL PROGRAM UPDATE

February was a momentous milestone in the bond program, with students starting the second week of February in the new building at Helman Elementary School. Ashland Middle School and Ashland Outdoor School is continuing to progress through finishes. Ashland High School received the GMP from Gerding Builders and Walker Elementary School's new addition progressed with concrete foundations. Finally, Maintenance and Transportation projects bid and contracts were awarded to Outlier Construction.



ASPHALT IN THE COURTYARD AT AMS

## ASHLAND MIDDLE SCHOOL + JOHN MUIR OUTDOOR SCHOOL

### CURRENT ACTIVITIES

Progress throughout the month of February included E building being painted on the inside. Ceilings were 75% installed with MEP's trimming out right behind. Bathroom tile was completed, and flooring was in process of being installed. Exposed existing ceilings in JMOS and AMS wings were cleaned and in the process of being sealed. Asphalt was completed in the common courtyard area. The boiler room is nearing completion with only insulation, finishes and start up needed.



JMOS CEILINGS  
CLEANED AND SEALED



ASPHALT IN THE  
COURTYARD AT AMS



## ACTIVITIES SCHEDULED FOR NEXT PERIOD

- More and more insulation, sheetrock and painting in all areas.



BOILER ROOM AND CHILLER



BOILER ROOM AND CHILLER

## HIGHLIGHTS

- Starting to see the finishes go in, especially in the new 6th grade building, reminds us the end will be here before we know it.



## HELMAN ELEMENTARY SCHOOL

**CURRENT ACTIVITIES**

In February, the school moved into the new building. There was a major push to get all of the remaining items completed but the team was able to do it. A massive effort was put into moving the classes into their new spaces and clearing out Quad A and Quad B in preparation for abatement and demolition. There were still punchlist items being addressed as time allowed. The construction fencing was put up around the administration, Quad A and B. Abatement activities began and are ongoing. The demolition of the admin area is nearly complete.



## NEW MULTI PURPOSE SPACE

**ACTIVITIES SCHEDULED FOR NEXT PERIOD**

- Continued demolition of Quads A and B.
- Landscaping around new building to occur.

**HIGHLIGHTS**

- The new building, parking lot and new playground are open for use.

**CHALLENGES**

- Due to procurement delays, there are still some punchlist items that need to be addressed.



## ASHLAND HIGH SCHOOL



### CURRENT ACTIVITIES

Progress with Ashland High School includes currently working on finalizing the GMP.

### ACTIVITIES SCHEDULED FOR NEXT PERIOD

- Possibility of early procurement on long lead items.

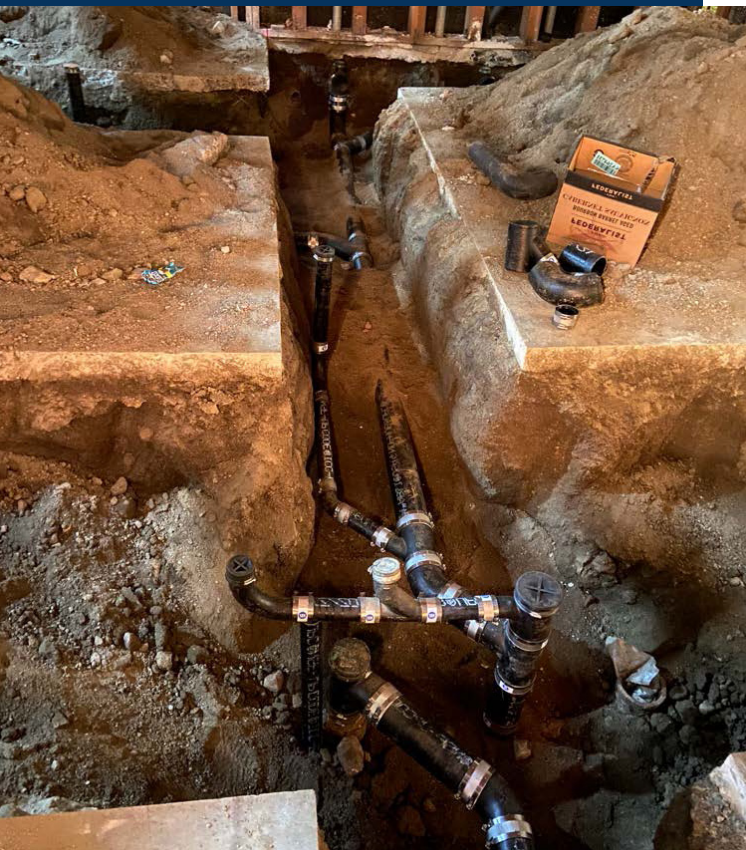


## CURRENT ACTIVITIES

Site work continued on the new addition. Underground stormwater piping was in process of being installed. The new building footing was formed, had rebar installed and was poured with concrete. Inside the renovation area, the Mechanical, Electrical and Plumbing contractors are working on roughing in their boxes, conduits, hangers and piping. Also in the renovation area, the underground piping is being installed for the new restrooms and sinks.

## ACTIVITIES SCHEDULED FOR NEXT PERIOD

- New Building Slab Preparation
- Continued Rough in of piping, ducting and electrical



## WALKER ELEMENTARY SCHOOL



POURING THE CONCRETE NEW ADDITION FOOTINGS

RENOVATION AREA UNDERGROUND PLUMBING

## HIGHLIGHTS

- Pouring the footing of the new addition.

The following list of local vendors who are currently working on the projects.

#### ASHLAND AREA VENDORS AND CONTRACTORS (DEFINED AS ROGUE VALLEY)

- Arkitek:design&architecture
- Adroit Construction Co.
- Ciota Engineering
- DOBRIN
- Covey Pardee Landscape Architecture
- Infinity Electric
- Douglas Engineering Pacific
- Van Row Mechanical
- HMK Company
- Cascade Communications
- KenCairn Landscape Architecture
- Quality Fence
- Kistler+Small+White Architects
- Bean Electric
- Pacific 3D Reality Capture
- Renfro
- Pariani Land Surveying
- Britannia
- Powell Engineering
- Patriot Landscaping
- ZCS Engineering & Architecture
- Sandeen Masonry
- Beflor
- Alco
- Top Notch
- Quality Fence
- Sandeen Masonry
- S&S Sheetmetal
- Metal Masters
- Urban Racks
- Moore Construction
- Curtis Huntley
- Devry
- Cut N' Break
- Precision Electric
- Advanced Air
- Welburn Electric

