



Ashland School District  
*inspiring learning for life*



## GENERAL PROGRAM UPDATE

The bond program continues to hit peak velocity, Helman Elementary School's new addition is approaching completion date. Although, several key materials still have not arrived. Ashland Middle School and JMOS construction is progressing well and maintaining schedule. Walker Elementary School's addition bid and Adroit is completing the GMP for the December board meeting. Ashland High School is nearing completion of design and documents prepared to issued to bidders at the start of next year.



OVERVIEW OF HELMAN ELEMENTARY  
NEW BUILDING AND COURTYARD



## ASHLAND MIDDLE SCHOOL + JOHN MUIR OUTDOOR SCHOOL

### CURRENT ACTIVITIES

Siding on the east side of the Mid Gym is almost complete. Stucco on the new 6th grade building is also in its final stages, with drywall finishes on the second floor taking place, and will be ready for paint next month. The main Electrical room is painted and ready for gear to be installed. Insulation is installed in the D wing getting ahead of the sheet rockers.



SIDING ON THE EAST  
SIDE OF THE MID GYM



STUCCO ON THE 6TH  
GRADE BUILDING



FINISHES AT THE 2ND  
FLOOR 6TH GRADE





MAIN ELECTRICAL  
ROOM PAINTED AND  
READY FOR GEAR

INSULATION IN THE D WING  
BETWEEN CLASSROOMS



## ACTIVITIES SCHEDULED FOR NEXT PERIOD

- The first several layers of the roofing system have been installed.
- Scheduled activities for this next period are the final layer of roofing and flashings.
- Everything is dried in, so trades can continue rough in on the inside of the buildings.
- Steel canopies at the courtyard and the East end of JMos have been erected.
- The next step in the process will be the metal roofing panels.

STEEL CANOPIYS ERECTED  
AND READY TO RECEIVE  
METAL ROOF PANELS



## HIGHLIGHTS

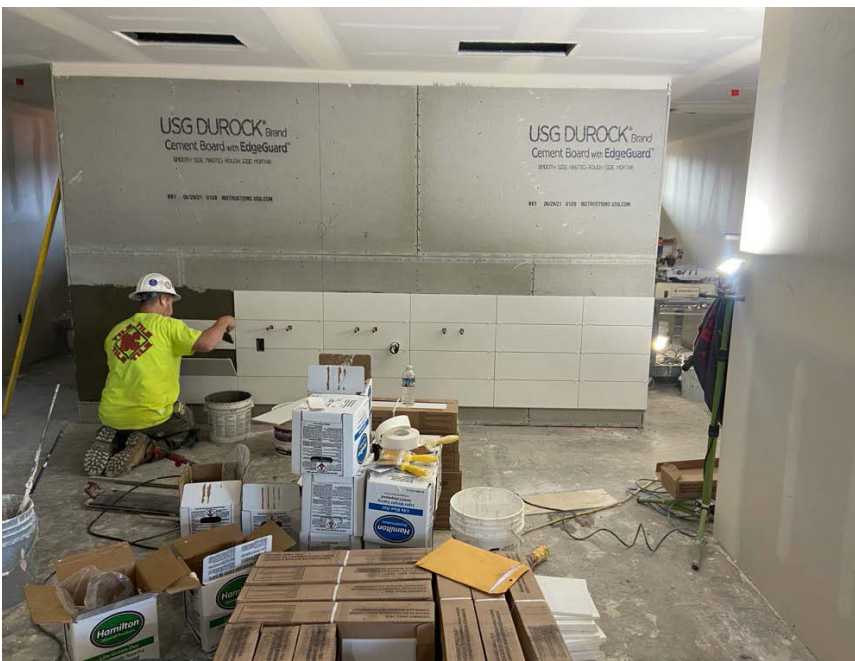
- All the trades are roughing in utilities in every building.



## HELMAN ELEMENTARY SCHOOL

### CURRENT ACTIVITIES

Drywall continues to be installed in the new building. Data cables and wire are being run to the outlets. Lights and ceiling grids are starting to be installed on the east side. The north courtyard that includes snowmelt in some of the sidewalks is all poured out. The final pieces of the new HVAC system are being installed. This includes ducting connections, seals and seismic bracing. The roof is nearly complete now that the new mechanical units have arrived and been set in place. Site work continues on the east side of the new building as the new basketball court and parking lot are being prepped.



NEW TILE IN RESTROOMS

### ACTIVITIES SCHEDULED FOR NEXT PERIOD

- Siding installation
- Casework

### HIGHLIGHTS

- Site working is starting on the basketball court, along with new parking

### CHALLENGES

- Continued Issues with procurement – siding, generator, drinking fountains and electrical gear.

## ASHLAND HIGH SCHOOL

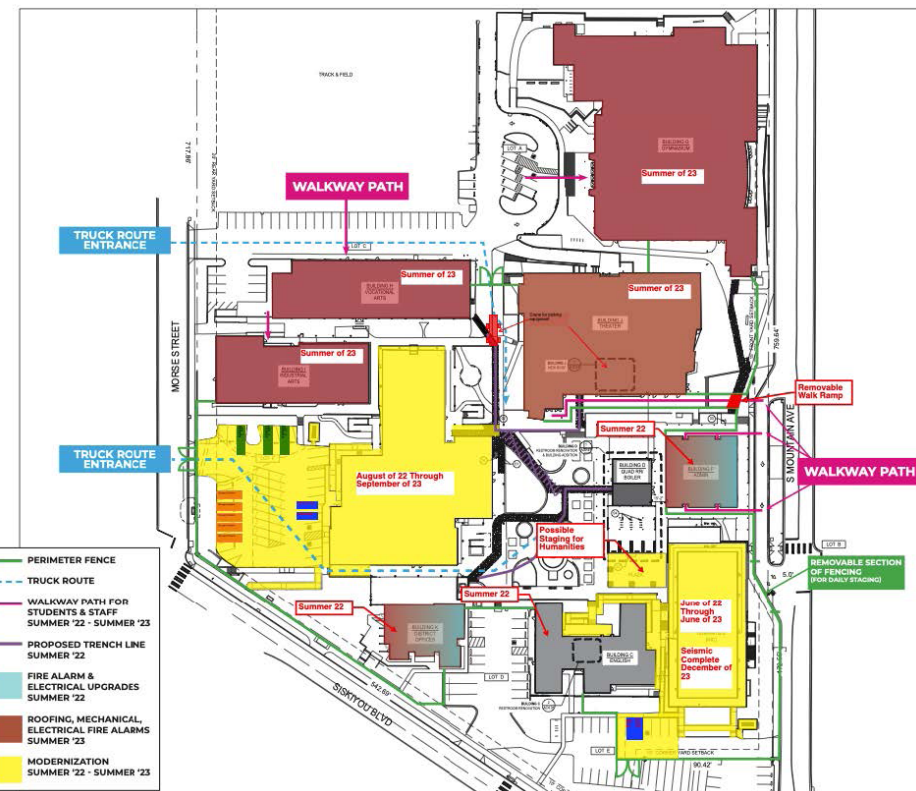


### CURRENT ACTIVITIES

The project team is reviewing and reconciling the last round of estimate for Phase I. Additionally, the team is reviewing the Phase I and Phase II (Campus-Wide HVAC) drawings to determine the potential for phasing and minimal disruptions to students.

### ACTIVITIES SCHEDULED FOR NEXT PERIOD

- Full Constructability Review will be underway to capture any additional areas where Value Engineering measures may be implemented depending on estimates.
- Arkitek will complete Phase II drawings and submit to estimators.



### HIGHLIGHTS

- Working with the Design team and CM|GC to explore interstitial spaces, wall types and pipe sizing to eliminate more questions down the road.
- We are also working on a Site Logistics plan to minimize impact to students and staff.



## CURRENT ACTIVITIES

This month, site work began with clearing and grubbing, as well as tree removal on the southeast side of the campus, preparing for the new parking lot. The new sheeting on the existing school wing and cafeteria is complete and the new roof is being installed. Framing and structural improvements are continuing with some additional metal stud strongbacks to brace the existing building in the event of seismic activity. Phase 2, which includes the new addition, was bid and there was good coverage from the local subcontractor groups.

## ACTIVITIES SCHEDULED FOR NEXT PERIOD

- Continued site work
- Awarding of the Phase 2 Contract

## WALKER ELEMENTARY SCHOOL



ROOF DEMO AND  
REPLACEMENT AT  
RENOVATION

NEW STEEL STUD  
STRONGBACKS IN BASEMENT



## HIGHLIGHTS

- Roofing material arrived onsite (Long lead item)
- Site work began

The following list of local vendors who are currently working on the projects.

#### ASHLAND AREA VENDORS AND CONTRACTORS (DEFINED AS ROGUE VALLEY)

- Arkitek:design&architecture
- Adroit Construction Co.
- Ciota Engineering
- DOBRIN
- Covey Pardee Landscape Architecture
- Infinity Electric
- Douglas Engineering Pacific
- Van Row Mechanical
- HMK Company
- Cascade Communications
- KenCairn Landscape Architecture
- Quality Fence
- Kistler+Small+White Architects
- Bean Electric
- Pacific 3D Reality Capture
- Renfro
- Pariani Land Surveying
- Britannia
- Powell Engineering
- Patriot Landscaping
- ZCS Engineering & Architecture
- Sandeen Masonry
- Beflor
- Alco
- Top Notch
- Quality Fence
- Sandeen Masonry
- S&S Sheetmetal
- Metal Masters
- Urban Racks
- Moore Construction
- Curtis Huntley
- Devry
- Cut N' Break
- Precision Electric
- Advanced Air
- Welburn Electric

