



Ashland School District  
*inspiring learning for life*



SEPTEMBER 2021

# BOND NEWSLETTER

## GENERAL PROGRAM UPDATE

With four of the sites under construction and the remaining projects all in design, the Bond Program has hit the peak busyness. Helman is continuing into interior finishes and exterior site work on the new building. Walker Elementary is heavily underway in abatement and demo, while the Phase 2 design work is being wrapped up. Students are back onsite at Willow Wind School and reaping the benefits of the new restrooms and updated HVAC system. Ashland Middle School + John Muir Outdoor School continues renovation work and completed the new parking area in time for the start of school. Ashland High School is continuing constructability and phasing discussions.



AERIAL VIEW OF NEW PARKING LOT AND  
PROGRESS AT ASHLAND MIDDLE SCHOOL

## ASHLAND MIDDLE SCHOOL + JOHN MUIR OUTDOOR SCHOOL

### CURRENT ACTIVITIES

The new curbs, parking and drive lanes are complete just in time for school start. On the inside, hallways have been raised for portions of ducting, plumbing, fire sprinklers, and electrical components. Weather barrier is in process on many portions of the project as well as windows and siding.

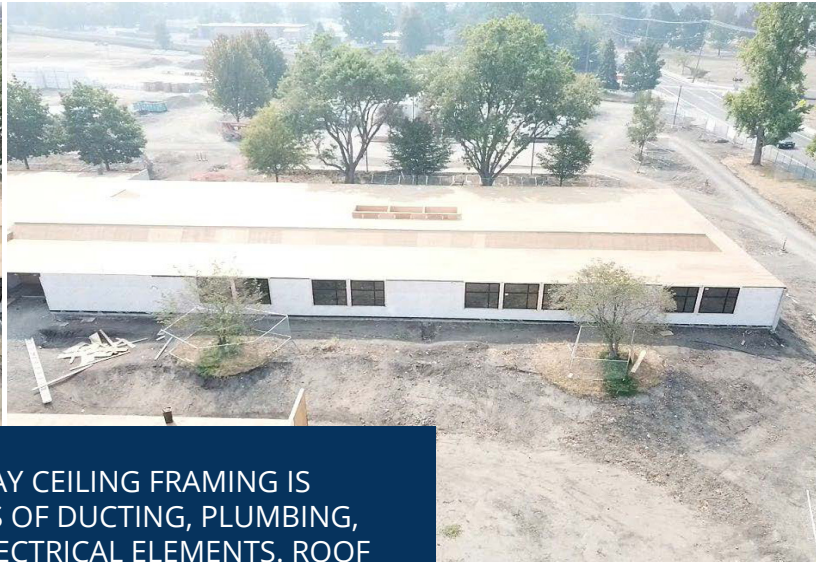


WEST PARKING LOT  
REPLACEMENT IN  
PROGRESS.

### ACTIVITIES SCHEDULED FOR NEXT PERIOD

- Roofing will be the name of the game beginning in September.
- Getting the buildings "dried in" is essential for all the interior work to be protected from the weather.
- The courtyard concrete is currently being poured. This portion of the site will be the first to receive exterior metal canopies.

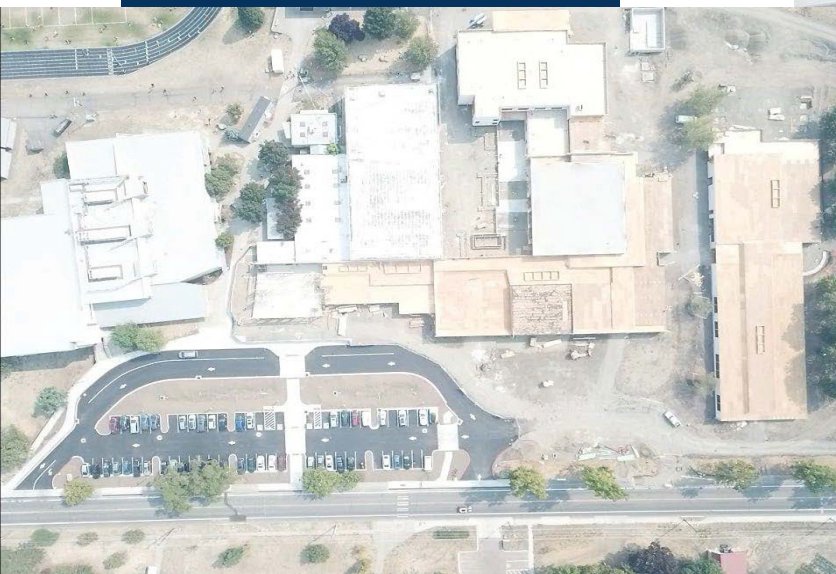




JMOS - RAISED HALLWAY CEILING FRAMING IS COMPLETE FOR PORTIONS OF DUCTING, PLUMBING, FIRE SUPPRESSION AND ELECTRICAL ELEMENTS. ROOF FRAMING AND SHEETING IS COMPLETE AND READY FOR A NEW ROOF SYSTEM. WEATHER BARRIER AND NEW WINDOW INSTALLATION IS ALMOST COMPLETE.

COURTYARD

WEST PARKING LOT  
REPLACEMENT IN PROGRESS.



## HIGHLIGHTS

- All the trades are roughing in utilities at the new 6th Grade Building.



## HELMAN ELEMENTARY SCHOOL

### CURRENT ACTIVITIES

The new building addition is moving along and some of the focus has shifted to the existing boiler rooms. The new boilers are now set in place and Precision Electric and Van Rowe Mechanical are working on getting them installed to supply the entire campus. The exterior windows and are about 50% installed and QED Labs was onsite to perform another window test, looking for any leaks. The test was successful. Jam Roofing is nearly complete with the roof installation. Drywall is beginning to get texture starting in the mechanical mezzanines.

Robert Lloyd Sheetmetal has concluded the majority of the ducting and is now going back to seismically reinforce it. Precision Electric continues to pull wire throughout the new addition. Underground conduit has been placed that connects the new addition to the existing boiler room. The hydronic mains lines were run underground from the new building to the existing boiler room.



ARIEL VIEW OF THE PROGRESS  
ON THE NEW ADDITION

### ACTIVITIES SCHEDULED FOR NEXT PERIOD

- Continued work to install the new boilers.
- Exterior cladding installation.



STOREFRONTS AT SOUTH-EAST ACTIVITY SPACE

### HIGHLIGHTS

- Window testing
- New boilers In place

### CHALLENGES

- HVAC Air handler is delayed at the manufacturer waiting for parts.

## ASHLAND HIGH SCHOOL



### CURRENT ACTIVITIES

The project team is reviewing and reconciling the last round of estimate for Phase I. Additionally, the team is reviewing the Phase I and Phase II (Campus-Wide HVAC) drawings to determine the potential for phasing and minimal disruptions to students.

### ACTIVITIES SCHEDULED FOR NEXT PERIOD

- Full Constructability Review will be underway to capture any additional areas where Value Engineering measures may be implemented depending on estimates.
- Arkitek will complete Phase II drawings and submit to estimators.



### HIGHLIGHTS

- Working with the Design team and CM|GC to explore interstitial spaces, wall types and pipe sizing to eliminate more questions down the road.



## CURRENT ACTIVITIES

Abatement and demolition are continuing at Walker. Belfor is making great progress on abating all of the necessary spaces in the old building. Structural improvements are starting to take place in the cafeteria with installation of shoring and BBT Architects completed the 95% Construction Documents and Adroit and Construction Focus are putting together estimates. Design has begun on the Phase 3 Gymnasium Seismic improvements and ZCS Engineering made a site visit to review the newly exposed structure on the main building and the existing gym structure for their design.

## ACTIVITIES SCHEDULED FOR NEXT PERIOD

- Continued abatement and demo.
- Destructive testing for Gym.

## WALKER ELEMENTARY SCHOOL



### ABATEMENT IN ADMIN AREA



### EXPOSED STRUCTURE IN BASEMENT

## HIGHLIGHTS

- Abatement Clearance at basement, cafeteria, and main classroom wing.



## WILLOW WIND LEARNING CENTER



### CURRENT ACTIVITIES

August saw a flurry of activity as the school year start quickly approached. New restrooms were tiled, had flooring installed and new fixtures installed. Ducting for the new HVAC system was installed and trimmed out. The new electrical service was installed and the switch gear was energized. The new HVAC units were started up and began supplying the new space fresh conditioned air. Site walkways and ramps were poured and completed. Landscape base and sprinklers were installed. The pad for the new modular building was completed and utilities were stubbed out at the location. Interior spaces received paint. The new health room was completed and trimmed out.

### ACTIVITIES SCHEDULED FOR NEXT PERIOD

- Modular delivery and installation
- Punchlist



PREPPING THE PAD AND TRENCHING UTILITIES FOR THE NEW MODULAR

### HIGHLIGHTS

- Students returned to a school with upgraded HVAC and renovated bathrooms.

### CHALLENGES

- Remaining HVAC Controls work is waiting on components to arrive.



NEW EPOXY FLOORING AT RESTROOM BUILD OUT

The following list of local vendors who are currently working on the projects.

#### ASHLAND AREA VENDORS AND CONTRACTORS (DEFINED AS ROGUE VALLEY)

- Arkitek:design&architecture
- Adroit Construction Co.
- Ciota Engineering
- DOBRIN
- Covey Pardee Landscape Architecture
- Infinity Electric
- Douglas Engineering Pacific
- Van Row Mechanical
- HMK Company
- Cascade Communications
- KenCairn Landscape Architecture
- Quality Fence
- Kistler+Small+White Architects
- Bean Electric
- Pacific 3D Reality Capture
- Renfro
- Pariani Land Surveying
- Britannia
- Powell Engineering
- Patriot Landscaping
- ZCS Engineering & Architecture
- Sandeen Masonry
- Beflor
- Alco
- Top Notch
- Quality Fence
- Sandeen Masonry
- S&S Sheetmetal
- Metal Masters
- Urban Racks
- Moore Construction
- Curtis Huntley
- Devry
- Cut N' Break
- Precision Electric
- Advanced Air
- Welburn Electric

