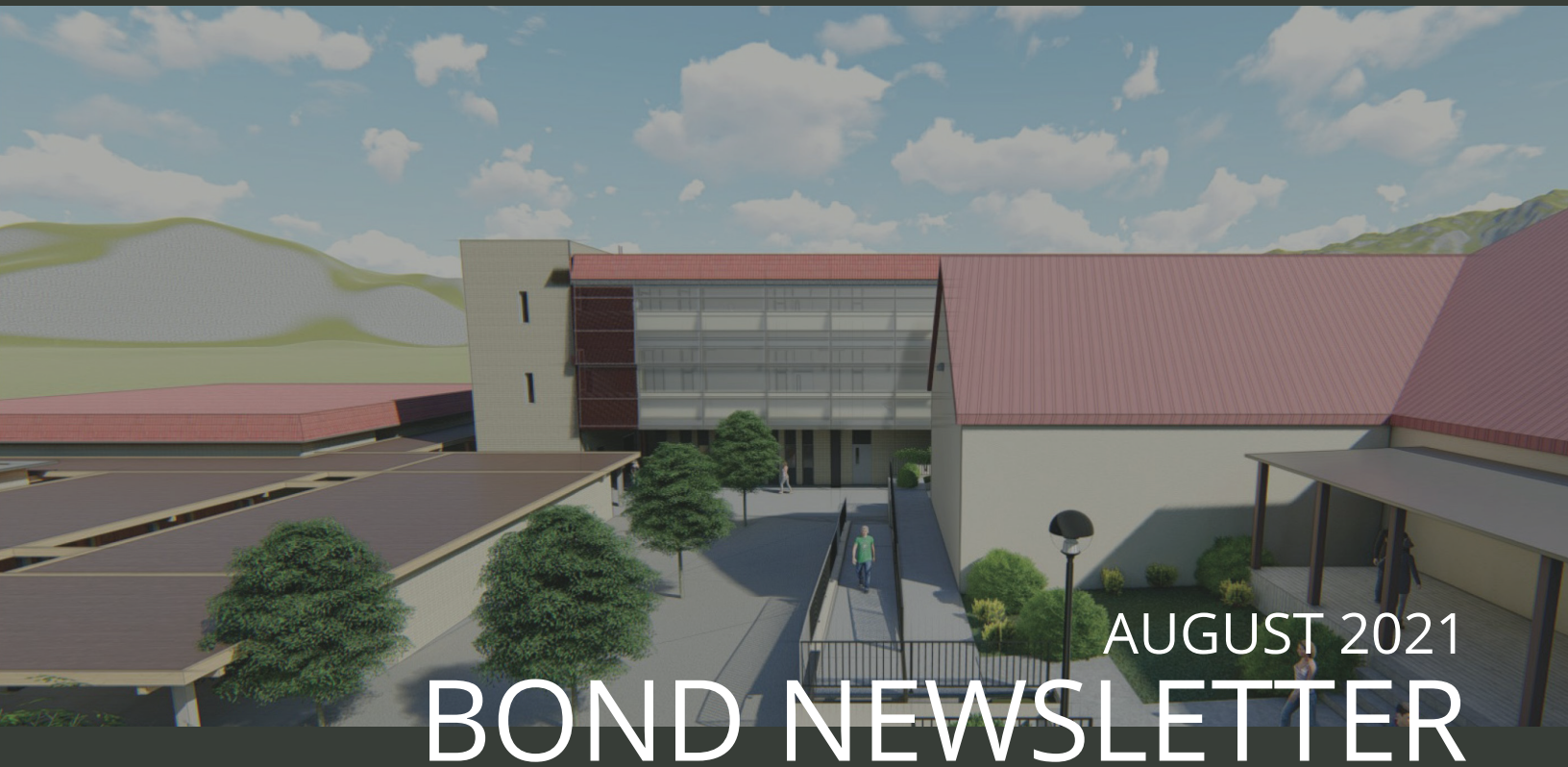




Ashland School District  
*inspiring learning for life*



## GENERAL PROGRAM UPDATE

July was a very busy month for bond work as the majority of staff was out for summer break. Walker Elementary kicked off construction beginning with mobilization, abatement and demo. The Willow Wind renovation project is well underway and has turned the corner to start finishes and tidy up the site work with school starting just around the corner. Ashland Middle School + John Muir Outdoor School's new west parking lot is continuing along and inside the building, the structure is being renovated to accommodate the new mechanical and plumbing. Helman Elementary School is continuing along with drywall going up inside and cladding beginning to be hung outside.



WILLOW WIND BATHROOM ADDITION  
AND NEW ROOFING BEING INSTALLED



## ASHLAND MIDDLE SCHOOL + JOHN MUIR OUTDOOR SCHOOL

### CURRENT ACTIVITIES

The new curbs, parking and drive lanes will be complete before school starts in the fall. Efficient progress is being made, and will be ready for asphalt in the parking lot mid-August, in order to be ready for kids to be dropped off on the first day of school. On the inside, hallways have been raised for portions of ducting, plumbing, fire sprinklers, and electrical components. Weather barrier is in process on many portions of the project in preparation of windows and siding.



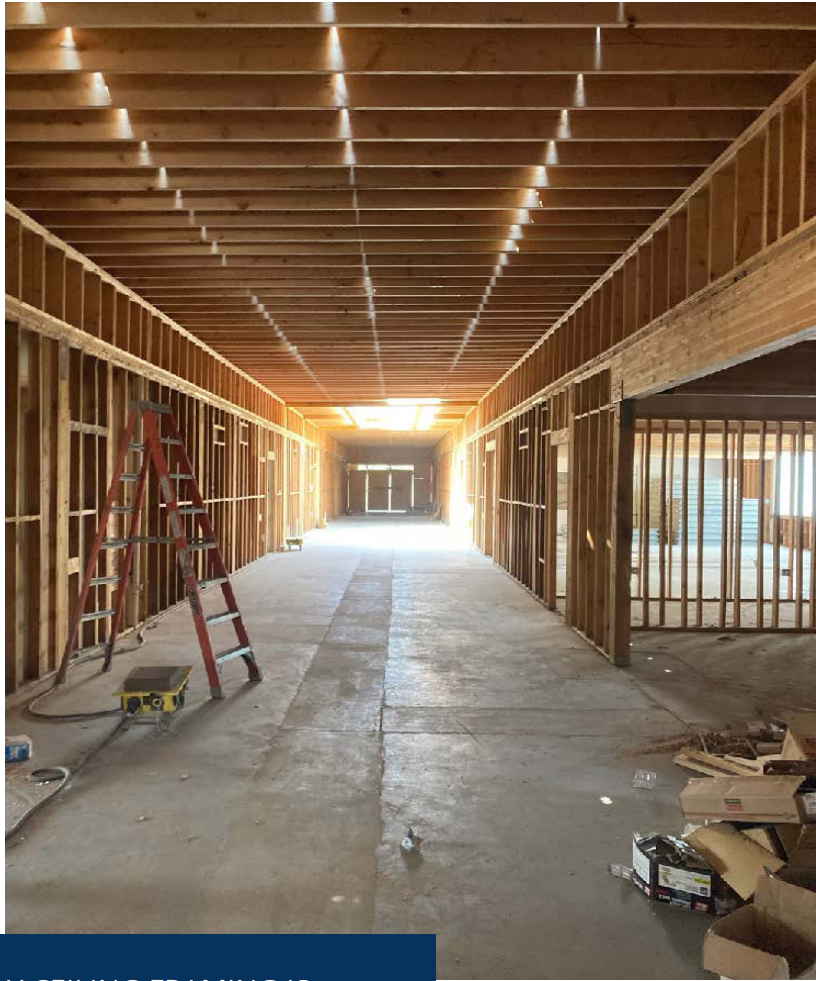
WEST PARKING LOT  
REPLACEMENT IN  
PROGRESS.



### ACTIVITIES SCHEDULED FOR NEXT PERIOD

- Roofing will be the name of the game beginning in September. Getting the buildings “dried in” is essential for all of the interior work to be protected from the weather.





JMOS - RAISED HALLWAY CEILING FRAMING IS COMPLETE FOR PORTIONS OF DUCTING, PLUMBING, FIRE SUPPRESSION, AND ELECTRICAL

COURTYARD



## HIGHLIGHTS

- All the trades are roughing in utilities at the new 6th grade building.



## CURRENT ACTIVITIES

Jam Roofing is onsite at Helman, installing the roof. The west wing of the new addition has all of the interior insulation installed and the insulators are now working on the east wing. The drywall is being hung in the west wing. The metal stud framing for some of the interior details is underway. Storefront windows are now being installed starting with the frames. The two mechanical mezzanines now have stairs up to them and they have been poured with concrete. Brittanica continues to grade out the site and with the perimeter footing drains installed, the building perimeter is mostly backfilled. Robert Lloyd Sheet Metal has begun to work on the existing buildings that are set to have their HVAC upgraded. The existing boiler is being removed and some of the infrastructure for the new boilers and chiller are being installed.

## HELMAN ELEMENTARY SCHOOL



NEW MECHANICAL MEZZANINE

## ACTIVITIES SCHEDULED FOR NEXT PERIOD

- Exterior cladding installation



INSTALLATION OF NEW ROOF

## HIGHLIGHTS

- Drywall is going up.
- Exterior insulation is onsite. This was a long lead, critical item.

## CHALLENGES

- Window delivery is delayed and the supplier is struggling to provide an updated delivery date.

## ASHLAND HIGH SCHOOL



### CURRENT ACTIVITIES

Throughout the month of July activities included opening up walls, ceilings and interstitial spaces to get a clearer understanding of how the buildings were built. The team is working towards finalizing the Construction Documents for a final round of estimates. As the Construction Documents enter their final stage, the understanding of the scope and price become much clearer.

### ACTIVITIES SCHEDULED FOR NEXT PERIOD

- Efforts will be concentrated on one more round of estimates from the consultants and CM|GC to fully realize the budget and scope.



### HIGHLIGHTS

- Working with the Design team and CM|GC to explore interstitial spaces, wall types and pipe sizing to eliminate more questions down the road.



## CURRENT ACTIVITIES

Walker Elementary is now off the ground and Adroit has mobilized onsite with their job trailer. Temporary construction fences are now up. Demo and abatement has begun on the existing school. The project team met with Adroit and BBT Architects to discuss bidding strategies for the site and addition work and also the gym seismic project. The second phase of the project was presented again, now that Parks and Recreation has approved it, at the Planning Commission meeting and the commissioners made a motion to adopt the findings. This allows the project to proceed with the second phase which will comprise the building addition and site work.

## WALKER ELEMENTARY SCHOOL



DEMO  
STARTING IN  
ADMIN AREA



## ACTIVITIES SCHEDULED FOR NEXT PERIOD

- Continued abatement and demo.

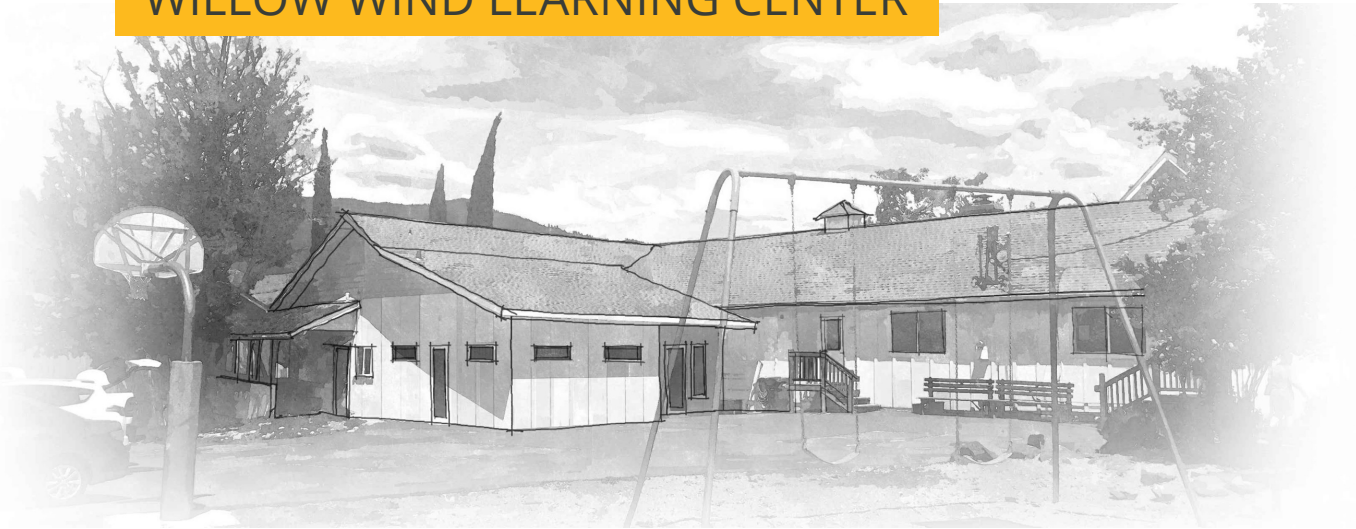


START OF ABATEMENT IN THE CAFETERIA

## HIGHLIGHTS

- Approval from Ashland Planning Commission

## WILLOW WIND LEARNING CENTER



### CURRENT ACTIVITIES

In July, all of the abatement was completed. The health room and new bathroom addition were framed completely out. Advanced Air continues to run the HVAC ducting and are now installing the units. The ADA site ramp was formed and the stem walls received concrete. Drywall is hung in the new storage/restroom hallway, health room and pump room. The new electrical service that will supply the HVAC equipment has been trenched and the vault is set in place. Evergreen Roofing is beginning to install the new roofing.



DRYWALL AT NEW  
HEALTH ROOM



### ACTIVITIES SCHEDULED FOR NEXT PERIOD

- Electrical and mechanical trim out
- Painting



NEW ELECTRICAL SERVICE VAULT



ROOFING THE NEW RESTROOM ADDITION

### HIGHLIGHTS

- Framing is complete.

### CHALLENGES

- Facing material supply issues with windows, HVAC equipment for the new modular and the transformer for the new electrical service.



The following list of local vendors who are currently working on the projects.

#### ASHLAND AREA VENDORS AND CONTRACTORS (DEFINED AS ROGUE VALLEY)

- Arkitek:design&architecture
- Adroit Construction Co.
- Ciota Engineering
- DOBRIN
- Covey Pardee Landscape Architecture
- Infinity Electric
- Douglas Engineering Pacific
- Van Row Mechanical
- HMK Company
- Cascade Communications
- KenCairn Landscape Architecture
- Quality Fence
- Kistler+Small+White Architects
- Bean Electric
- Pacific 3D Reality Capture
- Renfro
- Pariani Land Surveying
- Britannia
- Powell Engineering
- Patriot Landscaping
- ZCS Engineering & Architecture
- Sandeen Masonry
- Beflor
- Alco
- Top Notch
- Quality Fence
- Sandeen Masonry
- S&S Sheetmetal
- Metal Masters
- Urban Racks
- Moore construction
- Curtis Huntley
- Devry
- Cut N' Break
- Precision Electric
- Advanced Air
- Welburn Electric
- Oultier Construction
- Viking Concrete Cutting
- Evergreen Roofing
- Pac West Plumbing

