



Ashland School District  
*inspiring learning for life*



JUNE 2021

# BOND NEWSLETTER

## GENERAL PROGRAM UPDATE

May has been the busiest month for the bond to date. With two major projects well underway in construction, Willow Wind School's project kicked off pre-construction meetings in anticipation for summer break. Additionally, Walker Elementary School construction documents were issued to bidders.

Ashland Middle School + John Muir Outdoor School (JMOS) project continues with framing of the 6th grade building, concrete work for the administration addition and structural work throughout existing building.

Ashland High School design is wrapping up, with the last design meeting occurring in June. Additionally, the project team is nearing completion of the phasing plan.



MECHANICAL DUCTING  
FOR THE NEW HVAC



## ASHLAND MIDDLE SCHOOL + JOHN MUIR OUTDOOR SCHOOL

### CURRENT ACTIVITIES

Work is happening at every corner of the project. The 6th grade building is on the second-floor framing with roof framing in the very near future. The new library has the main brace frame in, and rough framing continues. Old roofing is being removed with preparations for additional diaphragm framing. Structural steel, blocking, backing is underway in the rest of the project.



THE NEW 6TH GRADE  
BUILDING SECOND STORY  
WALLS BEING BUILT.



ELEVATOR STEEL  
SUPPORT AT THE 6TH  
GRADE BUILDING

## ACTIVITIES SCHEDULED FOR NEXT PERIOD

- Walls will begin after the concrete floor has had time to set up in the Administration area.
- Site work will continue a fast pace with additional crews added to the project.



EAST END OF JMOS WING. SUBGRADE PREPARED AND READY FOR STEEL STRUCTURE FOOTINGS TO BE DIMENSIONED AND EXCAVATED.



## HIGHLIGHTS

- Demolition of existing structures is coming to an end.
- We are almost done “removing” parts and pieces of the existing building to make way for new components.



## HELMAN ELEMENTARY SCHOOL

**CURRENT ACTIVITIES**

May saw the majority of the framing and sheeting completed at Helman. The full profile of the building is now evident, and the individual rooms inside are being outfitted with conduit, ducting and plumbing. Both wings of the new addition were dried in by Jam roofing. RD Builders are working to complete the framing of the center of the building. Britannia is nearly complete with installation of a large 10' curtain drain that will capture excess storm water that has plagued the existing school for years. Dallas Glass, Ariel Sheetmetal, Certa and QED labs performed a successful window test on the mock up window.

**ACTIVITIES SCHEDULED FOR NEXT PERIOD**

- Continued Mechanical, Electrical and Plumbing Rough In
- Site Utilities
- Roofing

**OVERVIEW OF CONSTRUCTION PROGRESS****HIGHLIGHTS**

- East and West Wing dried in.
- Successful window test on mock up.

**ELECTRICAL CONDUIT AND  
HYDRONIC PIPING ROUGH IN**

## ASHLAND HIGH SCHOOL

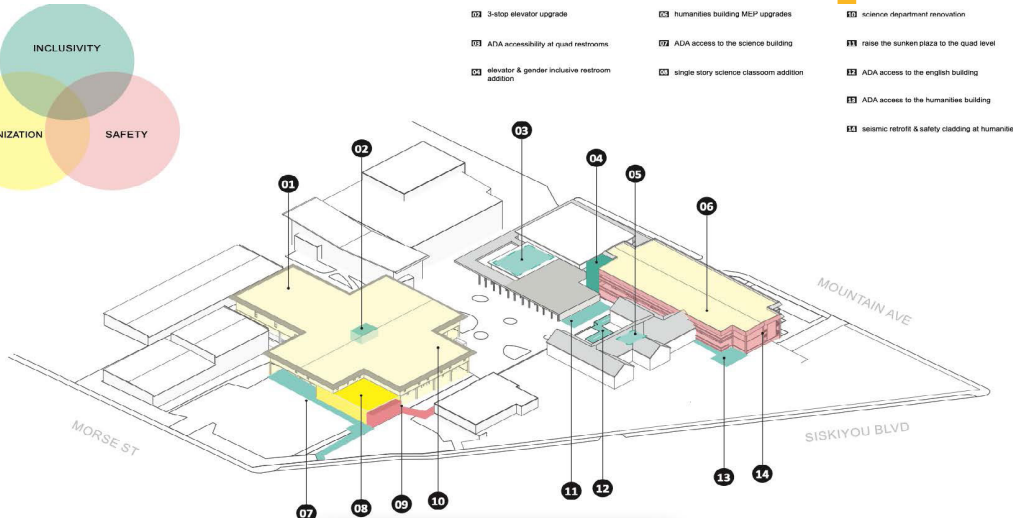


### CURRENT ACTIVITIES

Construction Documents are currently being worked on gathering all the information with help from Consultants, Contractors, and Focus Groups. As we get closer to having this complete, an estimate will then be requested to evaluate the budget before the CM/GC sends out the Invitation to Bid.

### ACTIVITIES SCHEDULED FOR NEXT PERIOD

- Working towards finalizing the Construction Documents for a final round of estimates.
- As the Construction Documents enter their final stage, the understanding of the scope and price become much clearer.



- 01 3-stop elevator upgrade
- 02 ADA accessibility at quad restrooms
- 03 elevator & gender inclusive restroom addition
- 04 humanities building MSP upgrades
- 05 ADA access to the science building
- 06 single story science classroom addition
- 07 science department renovation
- 08 raise the sunken plaza to the quad level
- 09 ADA access to the english building
- 10 ADA access to the humanities building
- 11 seismic retrofit & safety cladding at humanities

### HIGHLIGHTS

- A site committee meeting was held on May 18th, 2021.
- This gave anyone who wanted to attend the opportunity to see overall floorplans, new classroom layouts, exterior elevations, project goals, and project phasing expectations.



## CURRENT ACTIVITIES

Phase 1 of Walker Elementary is out to bid. This phase is the seismic renovation of the existing building wing. Bids are due at the beginning of June. A pre-bid walk was performed with great sub contractor participation. The new addition and site work phase will be presented to the Parks Commission once again in June for their support and presented to the planning commission in July for land-use approval.

## WALKER ELEMENTARY SCHOOL



## SCHEMATIC OF NEW SITE LAYOUT



## ACTIVITIES SCHEDULED FOR NEXT PERIOD

- Bids will be received for the phase 1 work.

## RENDERING OF RENOVATED CAFETERIA



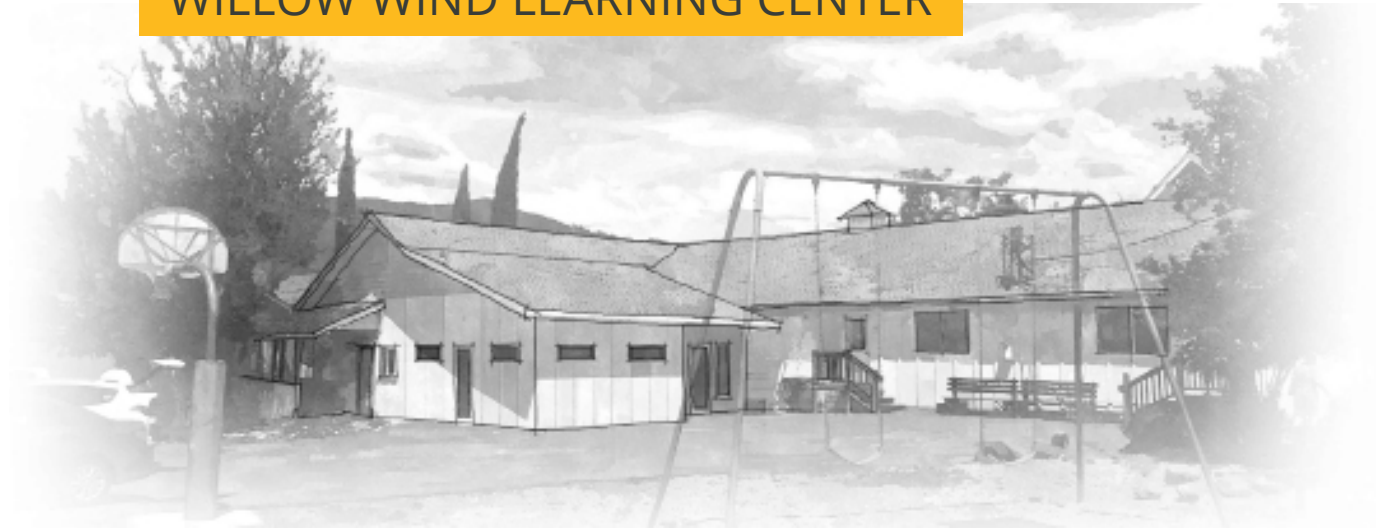
## HIGHLIGHTS

- Great participation at the pre-bid walk.

## CHALLENGES

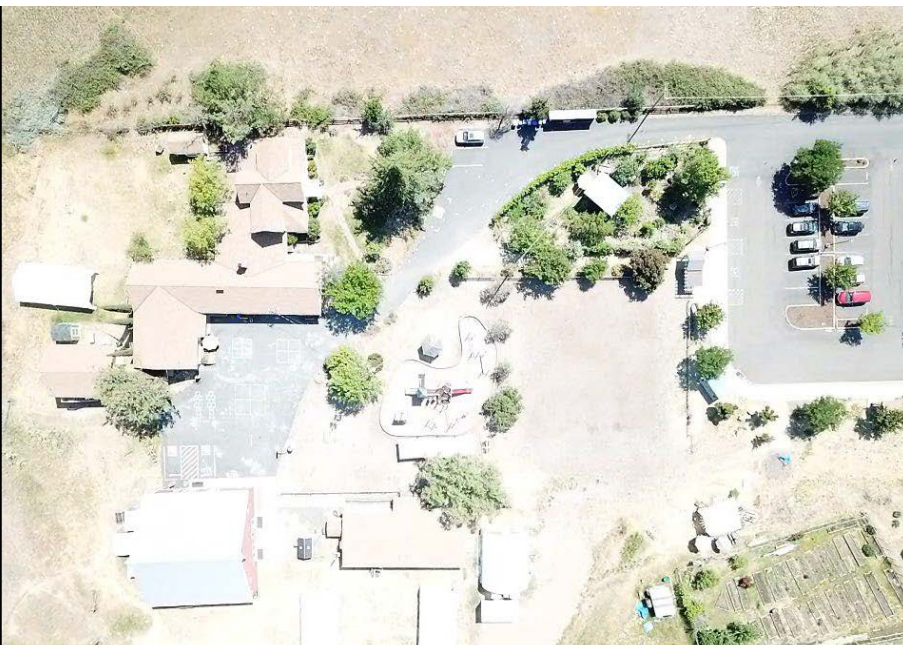
- Continued challenges seeking a resolution to the Parks Department conditions for approval.

## WILLOW WIND LEARNING CENTER



### CURRENT ACTIVITIES

In May, ASD, HMK and Outlier along with their sub-contractors met onsite to start working through the details of starting construction in June. Submittals are all in and the sub-contractors have begun to acquire material. Abatement and demo will be the first work to begin. HMK hosted the pre-construction kick off meeting outlining the expectations and requirements as the project starts construction. Systems West hosted a Commissioning kick off meeting with the mechanical and electrical sub-contractors.



OVERVIEW OF  
WILLOW WIND

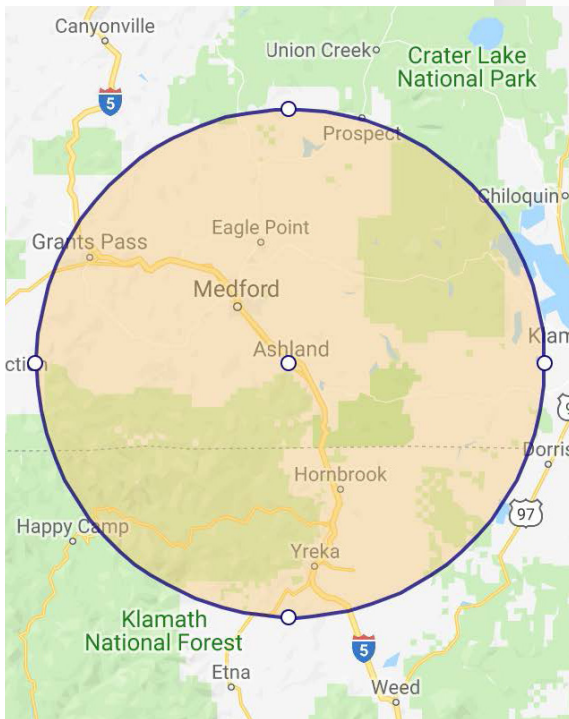
### ACTIVITIES SCHEDULED FOR NEXT PERIOD

- Construction Starting

### HIGHLIGHTS

- Pre-Construction meeting.
- Commissioning kick off meeting.





The following list of local vendors who are currently working on the projects.

#### ASHLAND AREA VENDORS AND CONTRACTORS (DEFINED AS ROGUE VALLEY)

- Arkitek:design&architecture
- Adroit Construction Co.
- Ciota Engineering
- DOBRIN
- Covey Pardee Landscape Architecture
- Infinity Electric
- Douglas Engineering Pacific
- Van Row Mechanical
- HMK Company
- Cascade Communications
- KenCairn Landscape Architecture
- Quality Fence
- Kistler+Small+White Architects
- Bean Electric
- Pacific 3D Reality Capture
- Renfro
- Pariani Land Surveying
- Britannia
- Powell Engineering
- Patriot Landscaping
- ZCS Engineering & Architecture
- Sandeen Masonry
- Beflor
- Alco
- Top Notch
- Quality Fence
- Sandeen Masonry
- S&S Sheetmetal
- Metal Masters
- Urban Racks
- Moore construction
- Curtis Huntley
- Devry
- Cut N' Break
- Precision Electric
- Advanced Air
- Welburn Electric