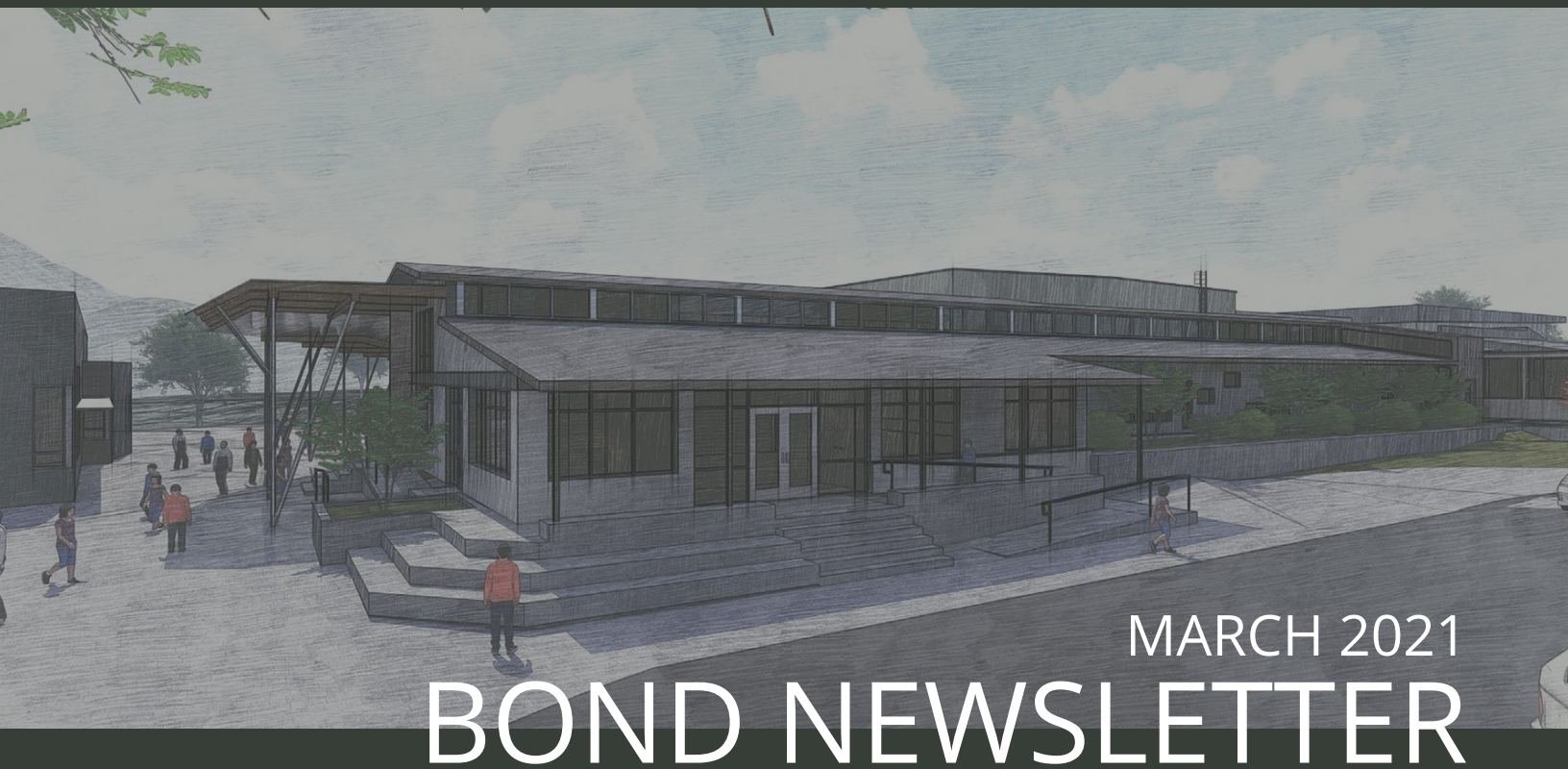




Ashland School District  
*inspiring learning for life*



## GENERAL PROGRAM UPDATE

In the month of February, demo and construction activities continued at Ashland Middle School + John Muir Outdoor School and Helman Elementary School. Significant progress was made at both locations, with building demolition of portions of Ashland Middle School and concrete slab pours at Helman.

Ashland High School Design Development was completed and submitted to the project team for estimating. Walker Elementary School entered the final phase of design, Construction Documents.



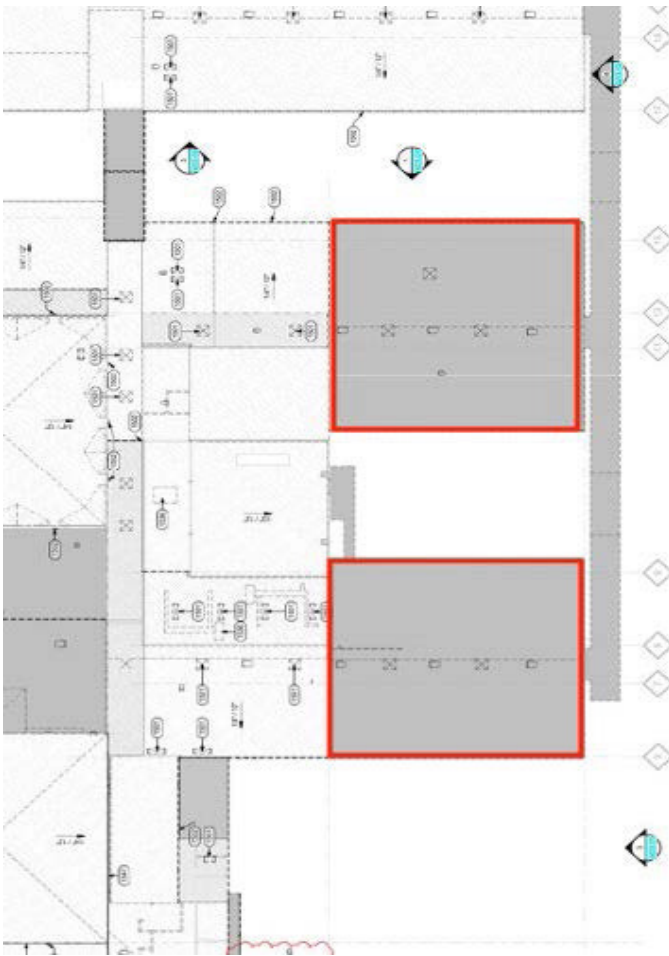
Design for district wide safety & security, technology and HVAC projects continue with design for sites that do not have major renovations occurring.



## ASHLAND MIDDLE SCHOOL + JOHN MUIR OUTDOOR SCHOOL

### CURRENT ACTIVITIES

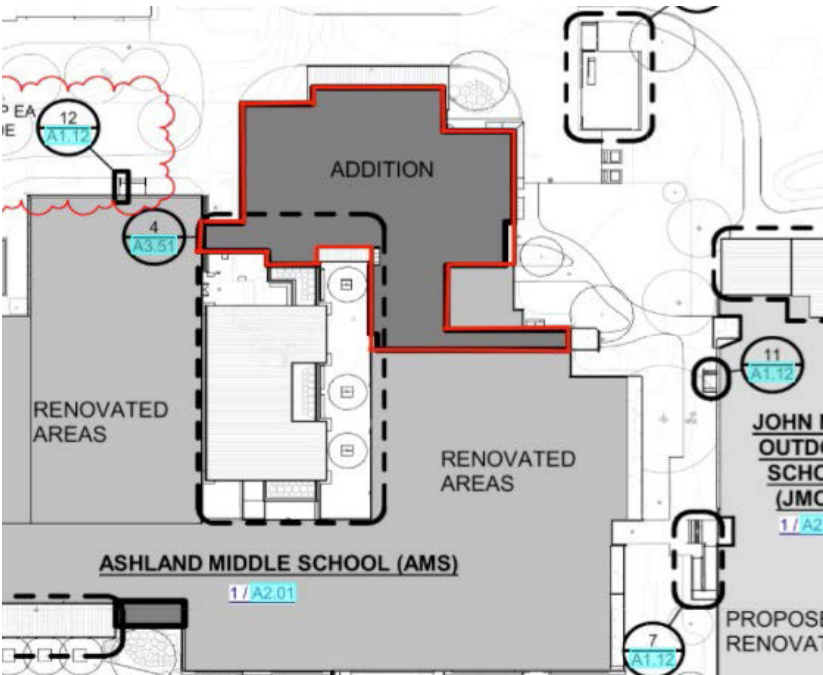
Area C, which is the old classroom wings, is being removed and ready for a whole new look. Roofing was removed first, followed by the building itself. Formwork and rebar for the footings at the new 6th grade building are almost complete. Waterproofing at the elevator pit is in place, and concrete was scheduled to flow the first week in March.



DEMOLITION DRAWING AD 2.01 FOR  
AREA C AND DRONE PHOTOGRAPH

## ACTIVITIES SCHEDULED FOR NEXT PERIOD

- Under slab utilities including electrical and plumbing will be installed at the new 6th grade addition.
- Once the work is in and the inspections are complete, preparations for the concrete slab will begin.



ARCHITECTURAL SITE PLAN A1.01 AND  
DRONE PHOTOGRAPH OF FOOTINGS FOR  
NEW 6TH GRADE BUILDING

## HIGHLIGHTS

- The end of demolition is in sight. Coming out of the ground with a new building is the start of feeling like we are “putting it back together”.

## CHALLENGES

- Soil that was unsuitable to build on was located where the new courtyard will be built. Excavation of additional soil was needed.

## SOLUTIONS

- Unsuitable soil was removed and new woven fabric along with 4” crushed rock and 3/4” rock to top it off was brought in to establish a firm base.



## HELMAN ELEMENTARY SCHOOL

**CURRENT ACTIVITIES**

February saw the continuation of the site work at Helman. All of the underground utilities at the new building are installed. The entire building pad is poured with concrete. RD Builders are onsite and starting the framing of the west side of the building. They will continue through the center portion and into the East wing over the upcoming weeks. Some of the structural steel is onsite and along with framing, some steel columns will begin to be installed.

**ACTIVITIES SCHEDULED FOR NEXT PERIOD**

- Structural steel, continuation of the framing and mechanical, electrical and plumbing rough in will begin to take place.



OVERVIEW OF CONSTRUCTION PROGRESS



FRAMING THE WEST SIDE OF THE BUILDING

**HIGHLIGHTS**

- The building has begun to go vertical with the completion of the framed walls.
- The building pad is entirely poured out with concrete.

## ASHLAND HIGH SCHOOL

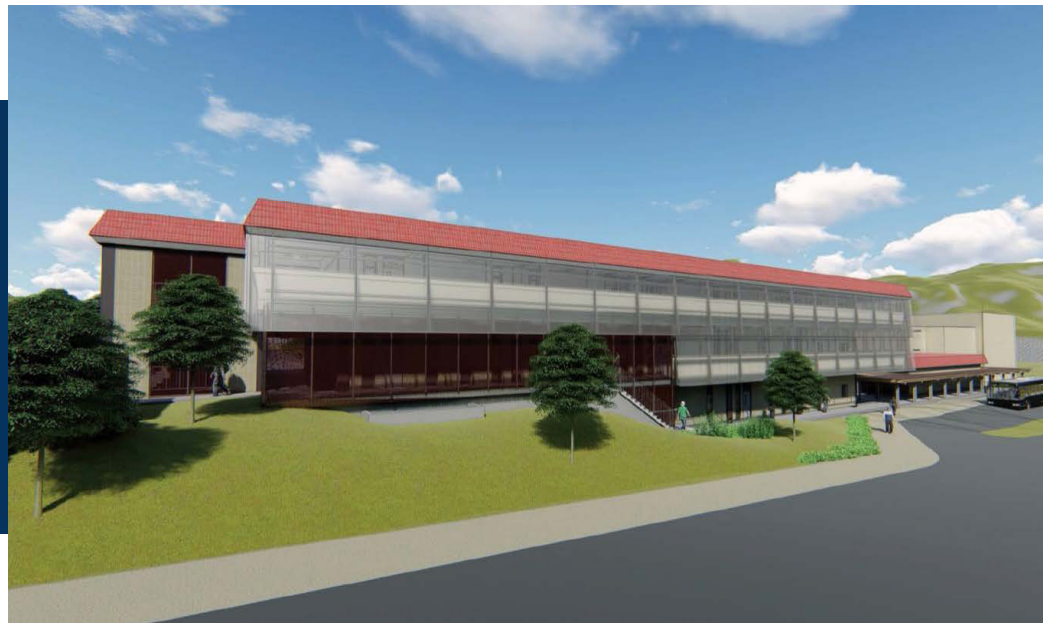


### CURRENT ACTIVITIES

During the cost estimation, the design team will continue their progress with the Construction Document (CD) phase of design, producing the documents that Gerding Builders will use to schedule and bid the project with subcontractors.

### ACTIVITIES SCHEDULED FOR NEXT PERIOD

Working towards finalizing the Construction Documents for a final round of estimates. As the CD's enter their final stage, the understanding of the scope and price become much clearer.



### HIGHLIGHTS

- 100% Design Development documents released.

### CHALLENGES

- Designing new restrooms to provide both privacy and security for students.

### SOLUTIONS

- The design team produced several iterations of restroom design so staff and students could decide which felt the best for their school.



## CURRENT ACTIVITIES

February marked the half-way point for Construction Documents. The findings for land use were submitted and these will go before the Commission at their March meeting. The project team also met with the Ashland Parks department to review the project and its impact on the parks adjacent property.



WALKER ELEMENTARY SCHOOL

Some additional structural destructive and investigative testing took place onsite. There was a meeting onsite with a window sub-contractor to review the direction for the historic window renovation.

## ACTIVITIES SCHEDULED FOR NEXT PERIOD

- A 95% CD estimate will occur.
- Land use commission meeting.
- The land use application will be submitted.



STRUCTURAL INVESTIGATION  
AT THE EXISTING FOOTING



HISTORIC WINDOW RENOVATION REVIEW

## HIGHLIGHTS

- Structural testing occurring
- Park Department meeting



## WILLOW WIND LEARNING CENTER



### CURRENT ACTIVITIES

In February, the Design Development was completed. Based on this drawing set, the project was sent out to bid. A mandatory pre-bid meeting took place onsite.

### ACTIVITIES SCHEDULED FOR NEXT PERIOD

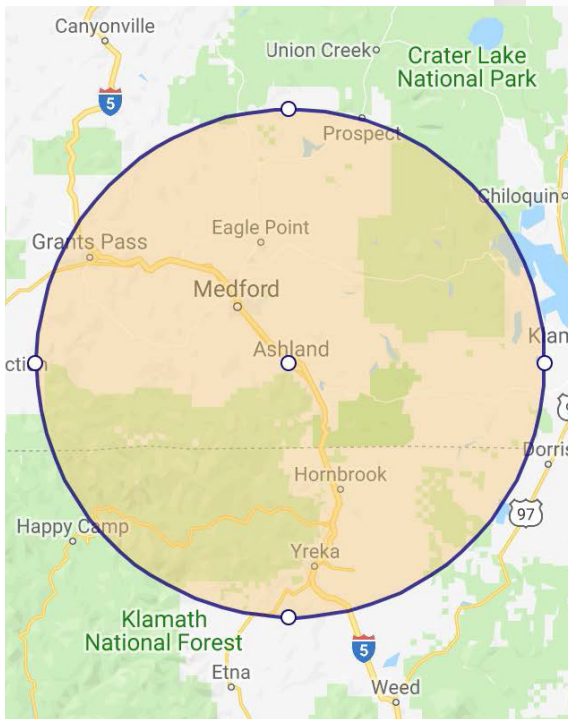
- Bids will be received.
- Contractor Selection.



PRE-BID MEETING

### HIGHLIGHTS

- Pre-Bid meeting



The following list of local vendors who are currently working on the projects.

#### ASHLAND AREA VENDORS AND CONTRACTORS (DEFINED AS ROGUE VALLEY)

- Arkitek:design&architecture
- Adroit Construction Co.
- Ciota Engineering
- DOBRIN
- Covey Pardee Landscape Architecture
- Infinity Electric
- Douglas Engineering Pacific
- Van Row Mechanical
- HMK Company
- Cascade Communications
- KenCairn Landscape Architecture
- Quality Fence
- Kistler+Small+White Architects
- Bean Electric
- Pacific 3D Reality Capture
- Renfro
- Pariani Land Surveying
- Britannia
- Powell Engineering
- Patriot Landscaping
- ZCS Engineering & Architecture
- Sandeen Masonry
- Beflor
- Alco
- Top Notch
- Quality Fence
- Sandeen Masonry
- S&S Sheetmetal
- Metal Masters
- Urban Racks
- Moore construction
- Curtis Huntley
- Devry
- Cut N' Break
- Precision Electric