

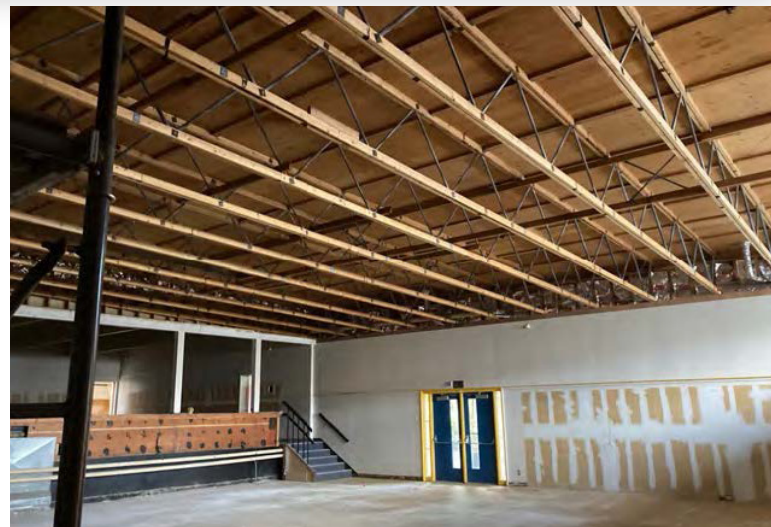


Ashland School District
inspiring learning for life



GENERAL PROGRAM UPDATE

In the months of December and January, demo and sitework activities continued at Ashland Middle School + John Muir Outdoor School and Helman Elementary School. Significant progress was made at both locations, with site clearing, underground utilities and forming and pouring foundation and slab at Helman, and demolition and abatement throughout Ashland Middle School + John Muir Outdoor School.



Ashland High School design continued with Core Team meetings to address the Humanities building and site circulation. Additionally, in January, arkitek submitted the 100% Design Development package.

Walker Elementary School onsite meetings occurred to explore specific areas of the existing building in preparation for the 100% Design Development delivery. Additionally, Brightworks completed their energy model.

Design for district-wide safety & security, technology, and HVAC projects continue with design for sites that do not have major renovations occurring.

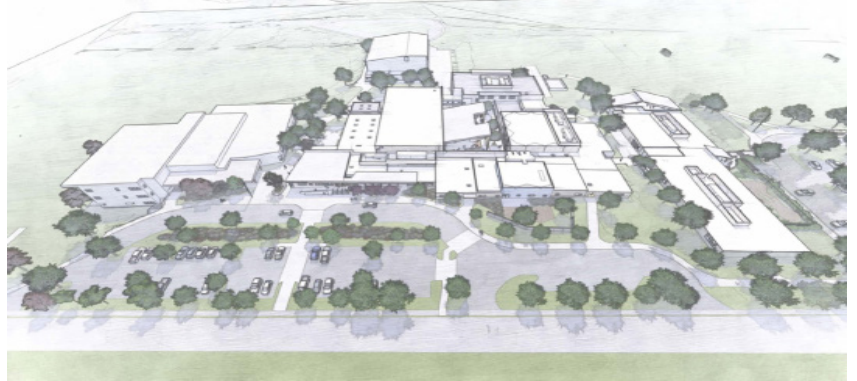
ASHLAND MIDDLE SCHOOL + JOHN MUIR OUTDOOR SCHOOL

CURRENT ACTIVITIES

DECEMBER

Throughout the month of December, on the east end of Area E, the major demolition began making room for the new building addition. Also, on the east end of Area H the major demolition began making room for the new Canopy.

Abatement in the balance of the building is coming to an end. Adding a new permanent water source to the existing kitchen took place while the school district employees were on winter break.



DEMOLITION DRAWING AD
2.15 FOR AREAS E AND H



DRONE PICTURE OF THE
DEMOLISHED AREAS E AND H



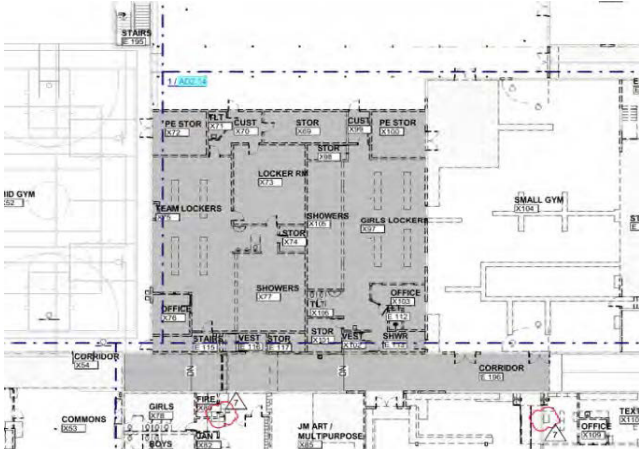
AREA H AT THE EAST END
OF THE JMOS BUILDING



AREA E DEMOLITION

JANUARY

The biggest change in the month of January was the Courtyard between the Mid Gym and the new library. The old team room, boys and girls locker rooms, and raised courtyard along with covered breezeways have been removed, as well as loose soils unsuitable for building on. New base rock has been brought into sub-grade elevation and will be ready for concrete work to begin soon.



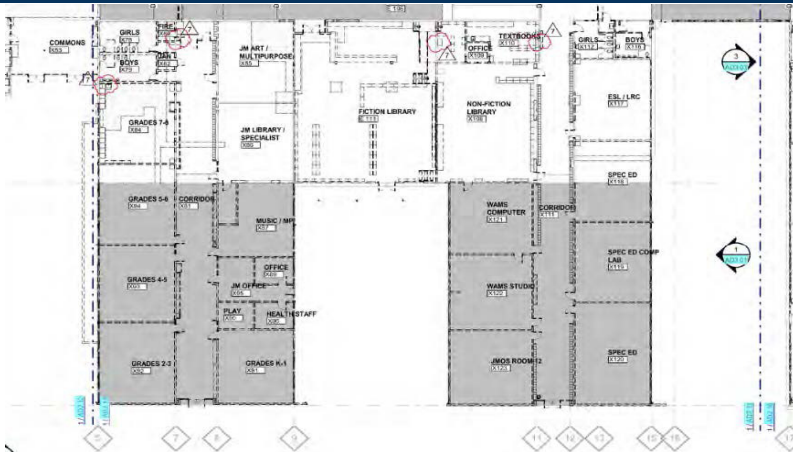
OLD TEAM ROOM, BOYS AND GIRLS LOCKER ROOMS



DEMOLITION DRAWING AD 2.01 FOR AREA D

ACTIVITIES SCHEDULED FOR NEXT PERIOD

- The major portion of the abatement will be complete. Demolition will continue with large areas of the building on the west side C portion being removed.
- Area C, which are the old classroom wings, is being prepared to be removed and ready for a whole new look. Roofing will be removed first, and then the building itself.



DEMOLITION DRAWING
AD 2.01 FOR AREA C



DRONE PICTURE OF AREA TO
BE DEMOLISHED IN AREA C

HIGHLIGHTS

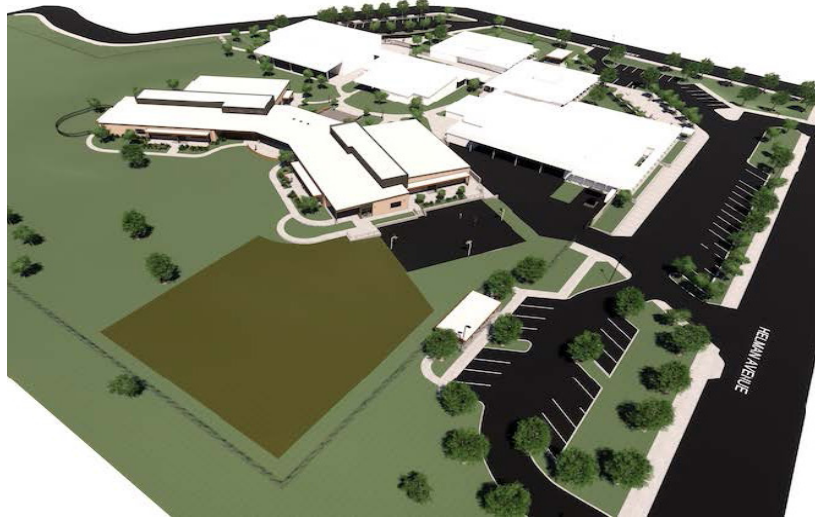
- Major Portions of the demolition at the end of E and H are mostly complete.
- Major Portions of the demolition at Section D are mostly complete.

CURRENT ACTIVITIES

DECEMBER

In December, excavation and demolition for the early site work continued. The west wing of the building footings and stem wall were poured. The east wing footings have been excavated and the forms are in place ready to be poured. Work began on the prep of the building concrete pad. The underground electrical and mechanical was installed, while the new basketball court and playground area was in process of being cleared of unsuitable soils.

HELMAN ELEMENTARY SCHOOL



UNDERGROUND PLUMBING



POURING CONCRETE FOR FOOTINGS



FORMS FOR STEM WALL

JANUARY

In January, the early site work continued with additional building pad preparations including backfilling, underground electrical, mechanical and plumbing installation and concrete. The perimeter footings for the entire building are now complete. The west side building slab has been poured and is curing. Adroit is working their way to the east side of the building continuing with the underground work and forming the stem and retaining walls.

The contract with Adroit has been amended and approved to include the full building package. The building site work will near completion and framing will begin to take place.



POURING CONCRETE FOR THE
WEST SIDE BUILDING PAD



COMPLETED WEST BUILDING PAD

ACTIVITIES SCHEDULED FOR NEXT PERIOD

- Framing and mechanical, electrical, and plumbing rough in will begin to take place.

HIGHLIGHTS

- Exterior building footings poured.
- Building pad excavated.
- GMP for the building package was approved.
- Building pad west side was poured.



FORMS FOR RETAINING WALL

ASHLAND HIGH SCHOOL**CURRENT ACTIVITIES****DECEMBER**

The design team and consultants worked diligently to incorporate each trade into the Design Development (DD) documents work towards a 100% completion through the month of December. HMK held a kickoff meeting for the Construction Manager/General Contractor (CM|GC) to introduce them to the project, and walked them through campus so they could start looking at phasing while assisting with constructability throughout the rest of the design process.

JANUARY

The design team completed the 100% Design Development (DD) deliverable on schedule and has sent it off to a cost estimator and to the Construction Manager/General Contractor (CM|GC) Gerding Builders for an additional cost estimate. This will help the design team confirm they are on track with the budget.

ACTIVITIES SCHEDULED FOR NEXT PERIOD

Concurrently with the cost estimation, the design team will continue their progress by commencing the Construction Document (CD) phase of design, producing the documents that Gerding Builders will use to schedule and bid the project with subcontractors.

HIGHLIGHTS

- CM|GC Kickoff!
- 100% Design Development documents released.

CHALLENGES

- Understanding each piece of the project with the CM|GC and how it relates to the school's program going forward so a discussion on how to phase construction to minimally impact students can occur.
- Designing new restrooms to provide both privacy and security for students.

SOLUTIONS

- The design team produced several iterations of restroom design so staff and students could decide which felt the best for their school.

CURRENT ACTIVITIES

DECEMBER

In December, the Design Development (DD) process was completed. Adroit and Construction Focus put together an estimate based on the DD set. Brightworks created an energy model that shows the reduction in energy usage that the school will encounter with the current design. System's West was selected to be the commissioning consultant for the project.

CONSTRUCTABILITY REVIEW WITH ADROIT AND BBT



ACTIVITIES SCHEDULED FOR NEXT PERIOD

- Construction Document phase begins.
- Constructability Review will occur.
- Construction Documents phase will continue.



LOCATION OF ADDITION AND RENOVATED ADMINISTRATION

WALKER ELEMENTARY SCHOOL



JANUARY

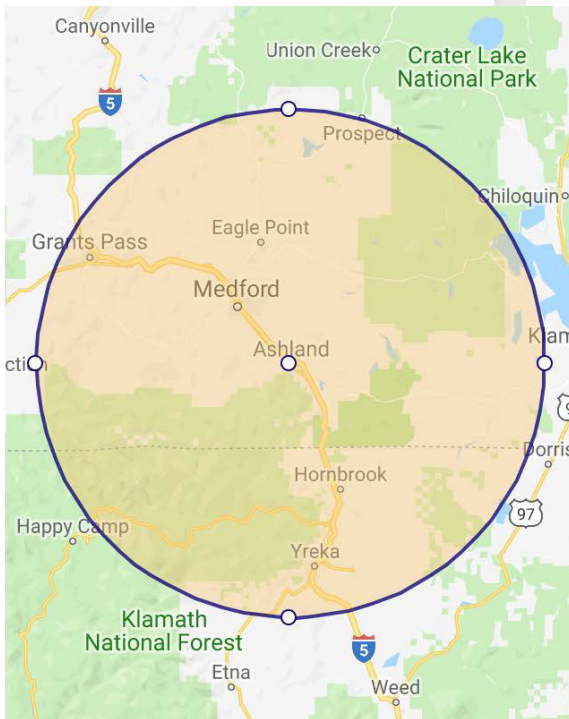
In January, a constructability review was performed onsite with HMK, BBT Architects, and Adroit Construction. The Land Use pre-application meeting occurred in preparation for the land use commission meeting to approve the current design. BBT presented the design to the School Board which allowed the board members the opportunity to review current design and address any questions.



LOCATION OF ADDITIONAL EXPLORATORY DEMO

HIGHLIGHTS

- DD Completed.
- Estimate was developed.
- Constructability Review.
- School Board Presentation.



The following list of local vendors who are currently working on the projects.

ASHLAND AREA VENDORS AND CONTRACTORS (DEFINED AS ROGUE VALLEY)

- Arkitek:design&architecture
- Adroit Construction Co.
- Ciota Engineering
- DOBRIN
- Covey Pardee Landscape Architecture
- Infinity Electric
- Douglas Engineering Pacific
- Van Row Mechanical
- HMK Company
- Cascade Communications
- KenCairn Landscape Architecture
- Quality Fence
- Kistler+Small+White Architects
- Bean Electric
- Pacific 3D Reality Capture
- Renfro
- Pariani Land Surveying
- Britannia
- Powell Engineering
- Patriot Landscaping
- ZCS Engineering & Architecture
- Sandeen Masonry
- Beflor
- Alco
- Top Notch
- Quality Fence
- Sandeen Masonry
- S&S Sheetmetal
- Metal Masters
- Urban Racks
- Moore construction
- Curtis Huntley
- Devry
- Cut N' Break
- Precision Electric