



Ashland School District
inspiring learning for life



GENERAL PROGRAM UPDATE

In the month of October, construction activities kicked off for both Ashland Middle School + John Muir Outdoor School and Helman Elementary School. Both Ashland High School and Walker Elementary School have continued Core Team and Focus Group meetings.

Willow Wind Restroom and HVAC project design is underway, with utility investigations and design reviews.

Additionally, the program team has begun scoping projects for the District-Wide HVAC projects. Projects will begin design and investigation will begin at the start of the new year.

Helman Elementary School



ASHLAND MIDDLE SCHOOL + JOHN MUIR OUTDOOR SCHOOL

CURRENT ACTIVITIES

Mobilization to the site will begin which includes temporary facilities, fencing, tree preservation, tree removal, abatement, and demolition. Erosion Control provisions, clearing and grubbing, utility disconnects for building removal, and electrical and HVAC removal begins.



FIRST CONSTRUCTION TRAILER ONSITE



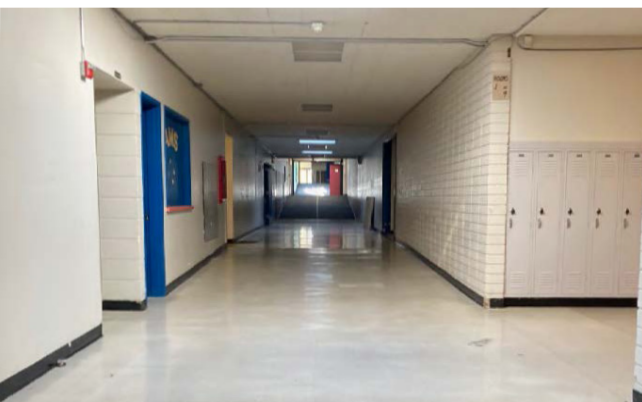
DUMPSTER DELIVERED

ACTIVITIES SCHEDULED FOR NEXT PERIOD

Abatement and demolition will be well underway. Additionally, keeping the kitchen staff rolling out the menu will be a top priority while the old permanent power and heat will turn into temporary utilities to keep them up and running.



SCHOOL ROOMS AND HALLS ARE CLEARED AND READY FOR THE RENOVATION



HIGHLIGHTS

- GMP has been approved by the school board and the letter of intent to Award has been sent to Adroit.

CHALLENGES + SOLUTIONS

- Initial GMP came in over-budget. In a process of evaluating sub-bids, interviewing subcontractors, we were able to align the budget with the GMP.

HELMAN ELEMENTARY SCHOOL

CURRENT ACTIVITIES

In October, the early sitework package bids were collected, and the district awarded a contract amendment for the sitework GMP. The full building package was sent out to bid. Part of the bid process included a pre-bid site walk. Bids for the building package are due November 12th. Adroit mobilized onsite and a pre-construction meeting took place with the district, HMK, BBT Architects and Adroit. Temporary fencing that includes tree protection went up around the construction site.



PRE-CONSTRUCTION MEETING

ACTIVITIES SCHEDULED FOR NEXT PERIOD

- Receiving Building Package Bids
- Ground-Breaking Ceremony
- Early Site Work Begins

ADROIT MOBILIZING ON SITE

**HIGHLIGHTS**

- Early Site Work Package Awarded
- Building Package out to bid
- Adroit mobilized and temporary fences

ASHLAND HIGH SCHOOL**CURRENT ACTIVITIES**

HMK along with the AHS Core Team reviewed and scored the seven proposals received from contractors, selecting four of them for an interview. The team then held the interviews the following week hosting all four contractors and scoring the interviews afterward. Gerding Builders was selected from this process as the contractor they felt was best for this project. arkitek/KSW have continued to work on the Design Development (DD) portion of the design process, holding various meetings to gather input from focus groups and the core team.

ACTIVITIES SCHEDULED FOR NEXT PERIOD

In November, arkitek/KSW will continue to meet with the focus groups to continue gathering input and sharing their concepts throughout the process. HMK will work with the district for approval of the formal recommendation to award on behalf of Gerding Builders.

HIGHLIGHTS

- Selecting a potential CM | GC!

CHALLENGES

- Holding four virtual interviews successfully, without issue.



CURRENT ACTIVITIES

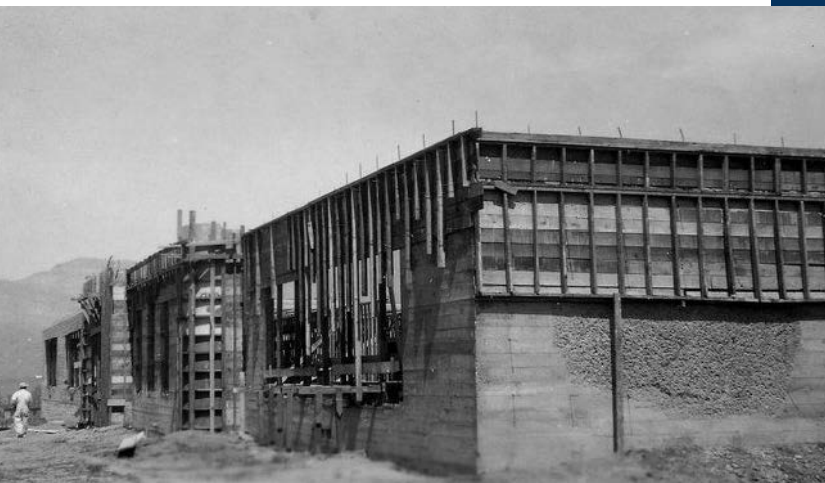
In October the Design Development (DD) phase began. Focus groups were held, allowing the staff and user groups to be introduced to the project and provide BBT Architects valuable input on their specific needs. The core design team met to continue the design process. Kramer and Company, the historic design consultant visited the site to take some pictures and evaluate the current conditions. Systems West Engineers was selected as the commissioning consultant. Adroit and CFI submitted estimates based upon the Schematic Design packet.

WALKER ELEMENTARY SCHOOL

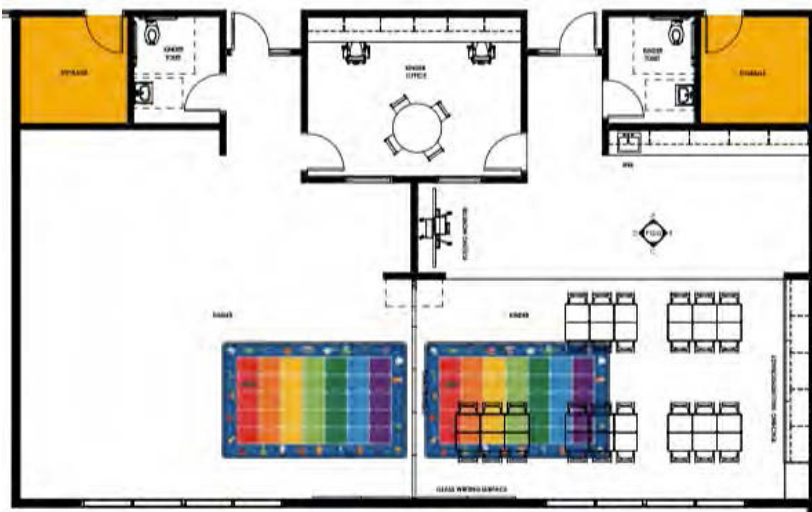


ACTIVITIES SCHEDULED FOR NEXT PERIOD

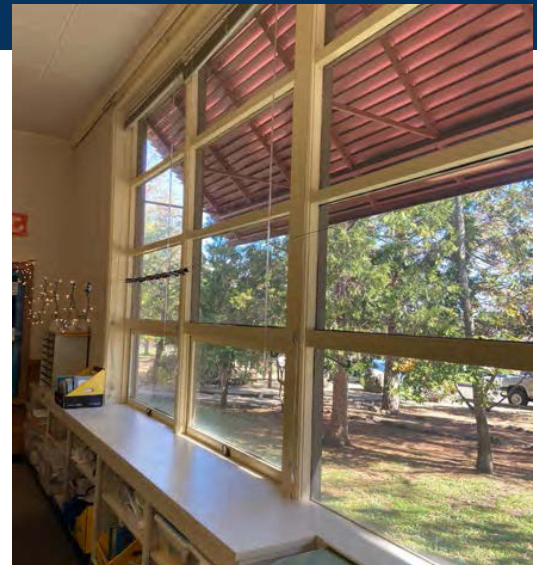
The DD process will continue with bi-weekly meetings. There will be several meetings with BBT including more focus groups, a staff presentation, a site council meeting, and a site visit with the design consultants. Brightworks will present the energy model of the project and this will give the district valuable information on the potential energy savings.



CONSTRUCTION OF HISTORIC WALKER



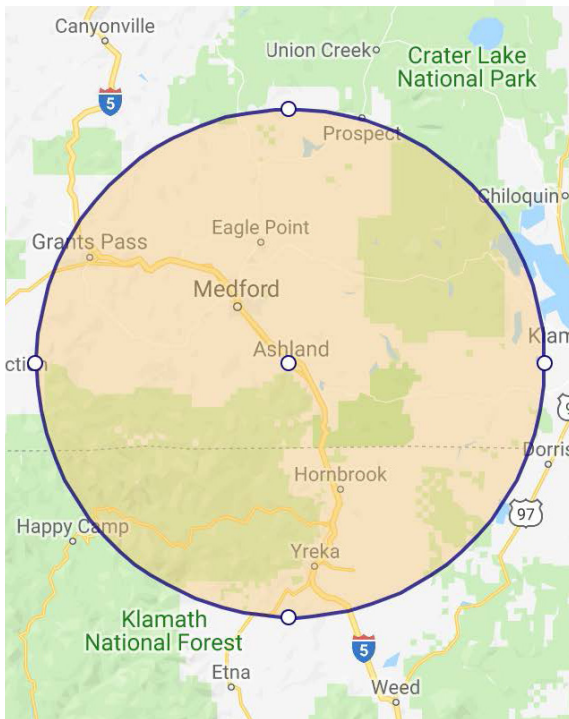
CONSTRUCTION OF HISTORIC WALKER



HISTORIC WINDOW FRONTAGE

HIGHLIGHTS

- Focus Group Meetings.



The following list of local vendors who are currently working on the projects.

ASHLAND AREA VENDORS (DEFINED AS ROGUE VALLEY)

- Arkitek:design&architecture
- Ciota Engineering
- Covey Pardee Landscape Architecture
- Douglas Engineering Pacific
- HMK Company
- KenCairn Landscape Architecture
- Kistler+Small+White Architects
- Pacific 3D Reality Capture
- Pariani Land Surveying
- Powell Engineering
- ZCS Engineering & Architecture

ASHLAND AREA CONTRACTORS

- Adroit Construction Co.
- DOBRIN Construction
- Infinity Electric
- Van Row Mechanical
- Cascade Communications
- Quality Fence
- Bean Electric
- Renfro
- Britannia
- Patriot Landscaping
- Sandeen Masonry
- Alco
- S&S Sheetmetal
- Urban Racks
- Curtis Huntley