



Ashland School District
inspiring learning for life

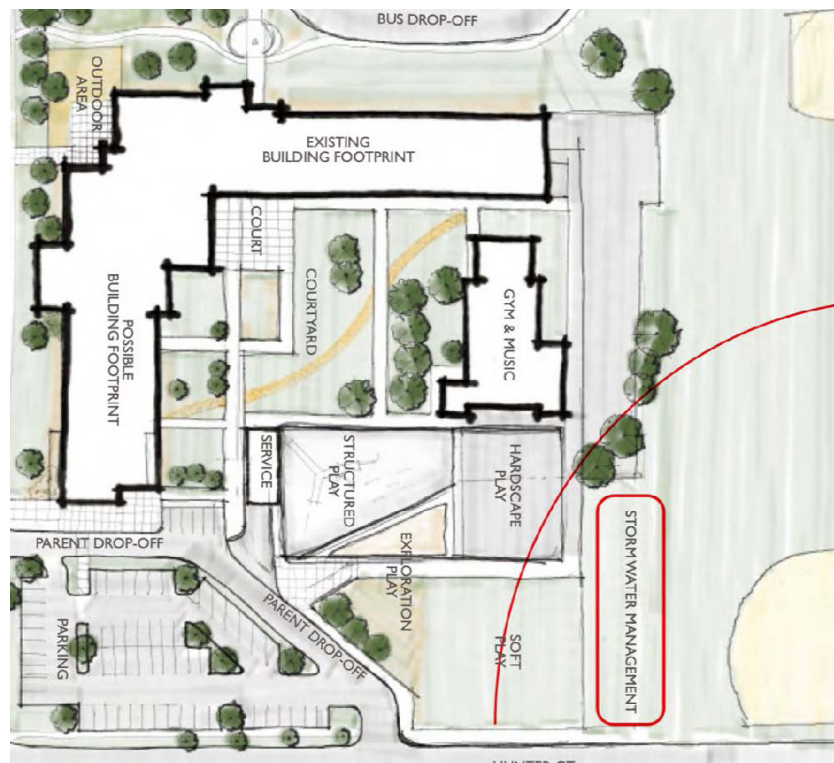


GENERAL PROGRAM UPDATE

In the month of July the Bond Team began work onsite at Ashland Middle School in preparation for temporary classrooms and facilities. Additionally, the design team completed permit documents and submitted to the City of Ashland. Lincoln School also received upgrades to finishes, and John Muir Outdoor School received HVAC and Technology upgrades.

The design at Ashland High School, Helman Elementary School and Walker Elementary Schools continued throughout the month with Core Team Meetings.

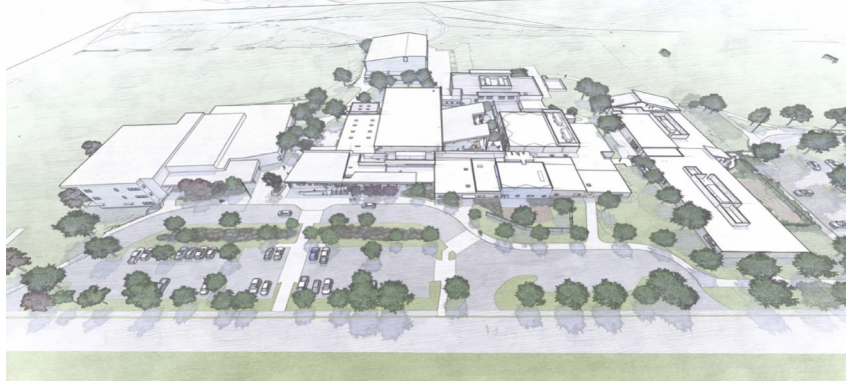
Walker Elementary School Schematic Design Concept



ASHLAND MIDDLE SCHOOL + JOHN MUIR OUTDOOR SCHOOL

CURRENT ACTIVITIES

- Soderstrom Architects submitted the permit set of documents to the City of Ashland.
- Adroit and subcontractors began working on the temporary facilities for Ashland Middle School students. The District's Facilities team began renovating Lincoln School for John Muir Outdoor School Students.



ACTIVITIES SCHEDULED FOR NEXT PERIOD

- Complete Temporary Facilities
- Receive final Construction Documents and issue to bidders

HIGHLIGHTS

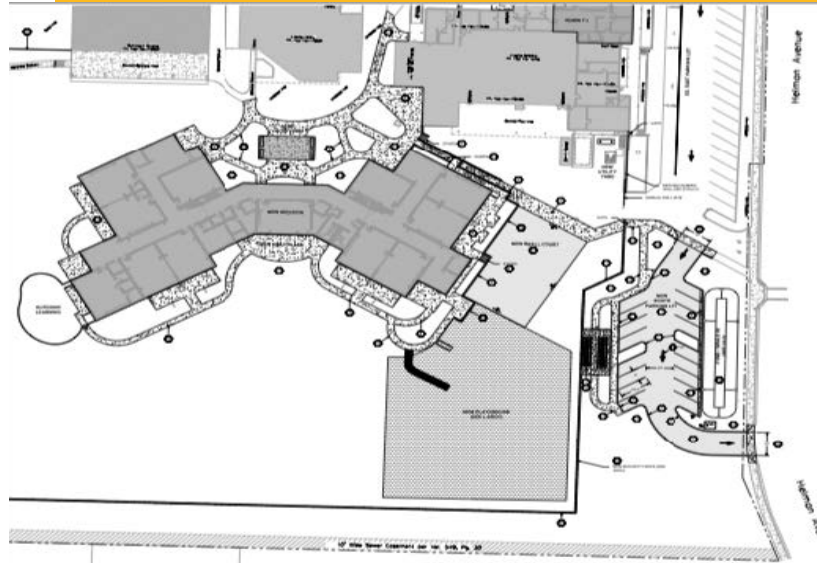
- Beginning work onsite for temporary classrooms
- Issuing documents to the City for Permitting



HELMAN ELEMENTARY SCHOOL

CURRENT ACTIVITIES

In July, the Construction Document (CD) phase continued. BBT continued to meet biweekly with the consultant team to ensure that questions are answered, and progress continues. The conditional use permit was approved at the planning commission meeting as well. There was a site visit with Ashland School District, BBT Architects, Walker Structural Engineering, Conley Engineering, Powell Engineering, KenCairn Landscape Architects and Adroit Construction. An early work package is being developed to allow for more flexibility in the schedule for the project.



Helman Elementary School Site Plan

The Ashland School District, HMK, BBT and MRC Recreation has completed the design of the playground. It will work well with the new classroom building and also allow more inclusion by incorporating some ADA features in the new fixtures.

Conceptual Playground



ACTIVITIES SCHEDULED FOR NEXT PERIOD

- Continued Consultant Meetings
- Adroit and BBT to perform constructability review

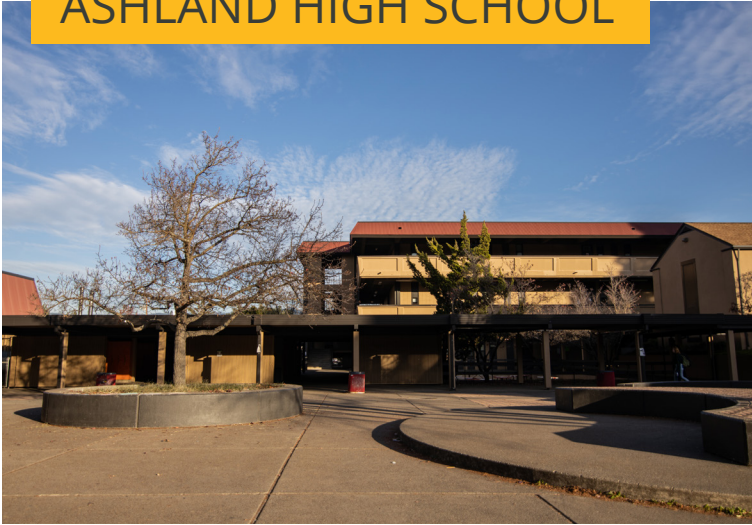
Conceptual Basketball Court



HIGHLIGHTS

- Conditional Use Permit Approval

ASHLAND HIGH SCHOOL



CURRENT ACTIVITIES

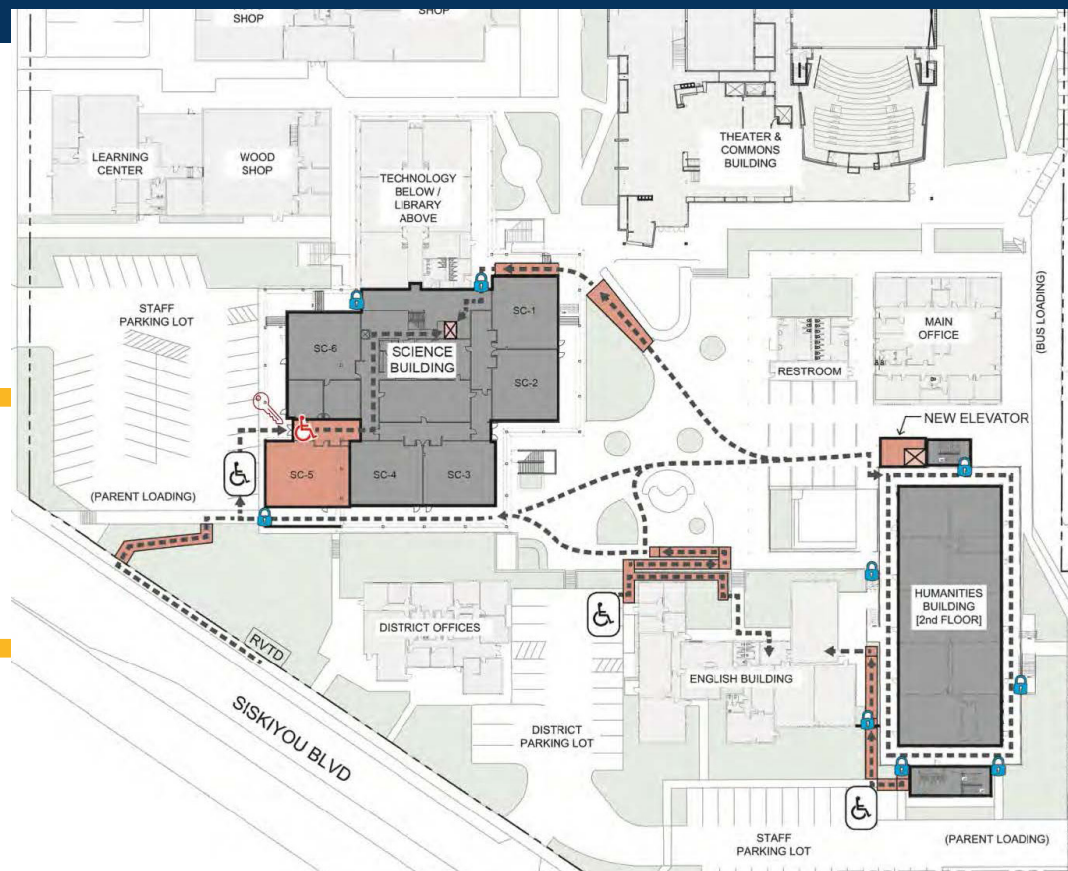
- The Core Team met several times in July to discuss programming and use of spaces.
- Two students were identified and added to the school Core team.
- Identify and review existing grades to determine ADA accessible pathways throughout the campus.

ACTIVITIES SCHEDULED FOR NEXT PERIOD

- Continuation of Schematic Design, with Core Team meetings and onsite assessments of existing conditions.
- Completing the 50% Schematic Design Deliverable.

HIGHLIGHTS

- Adding two students to the Core Team.



CURRENT ACTIVITIES

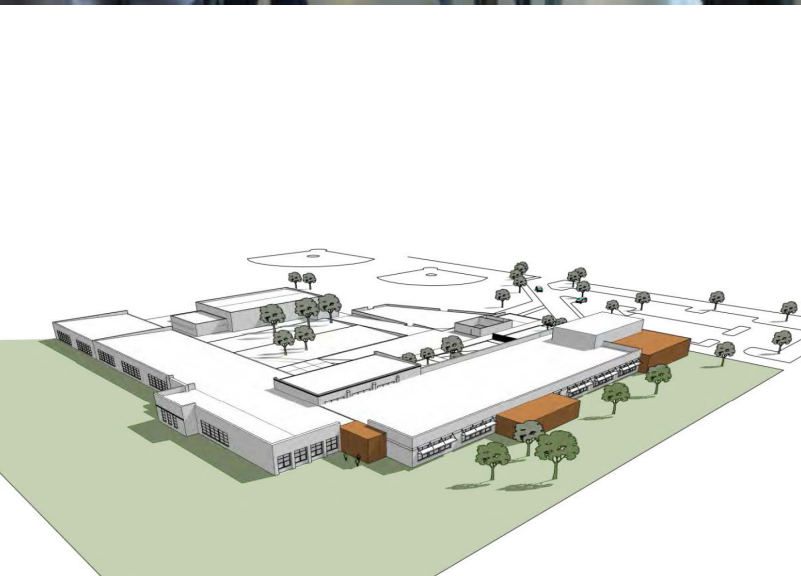
In July, the Ashland School District, BBT Architects, Walker Structural Engineering, Conley Engineering, Powell Engineering, ZCS Engineering, KenCairn Landscape Architects and Adroit Construction all visited the site to review the existing conditions and how they will be impacted by the design as it progresses.

WALKER ELEMENTARY SCHOOL



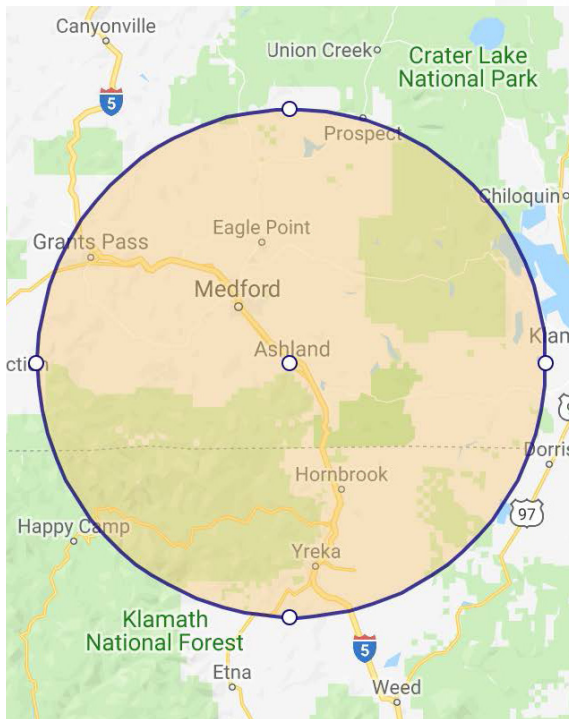
ACTIVITIES SCHEDULED FOR NEXT PERIOD

In August, the Core Design Team completed the Schematic Design process. This triggers an estimate to be completed.



HIGHLIGHTS

- Site visit with district, architects, engineers and consultants.



The following list of local vendors who are currently working on the projects.

ASHLAND AREA VENDORS (DEFINED AS ROGUE VALLEY)

- Arkitek:design&architecture
- Ciota Engineering
- Covey Pardee Landscape Architecture
- Douglas Engineering Pacific
- HMK Company
- KenCairn Landscape Architecture
- Kistler+Small+White Architects
- Pacific 3D Reality Capture
- Pariani Land Surveying
- Powell Engineering
- ZCS Engineering & Architecture

ASHLAND AREA CONTRACTORS

- Adroit Construction Co.
- Infinity Electric
- Van Row Mechanical
- Dobrin Consruction