



Ashland School District
inspiring learning for life



AUGUST 2020

BOND NEWSLETTER

GENERAL PROGRAM UPDATE

Ashland High School – arkitek design:planning
discussing ADA pathways with the school's
Core Team



In the month of June the bond team received the Ameresco reports detailing the HVAC needs and recommendations, district-wide. Ameresco spent the last 15 months reviewing as-built drawings, utility bills and visiting the schools to identify the needs and propose recommendations. The 600 page report also includes smoke mitigation methods and viral strategies for the HVAC systems.

In addition to furthering the design at Ashland High School, Ashland Middle School, John Muir Outdoor School, and Helman and Walker Elementary Schools, the team also kicked-off the projects at Willow-Wind.

Considerable planning is underway for the deployment of district-wide technology strategies and other district-wide projects.

ASHLAND MIDDLE SCHOOL + JOHN MUIR OUTDOOR SCHOOL

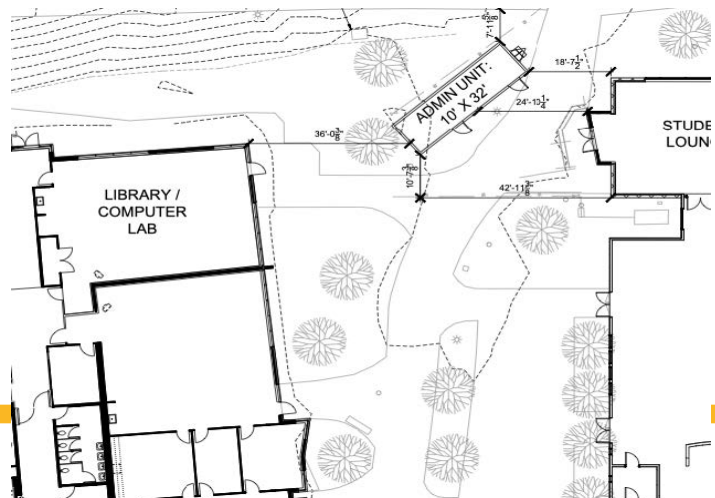
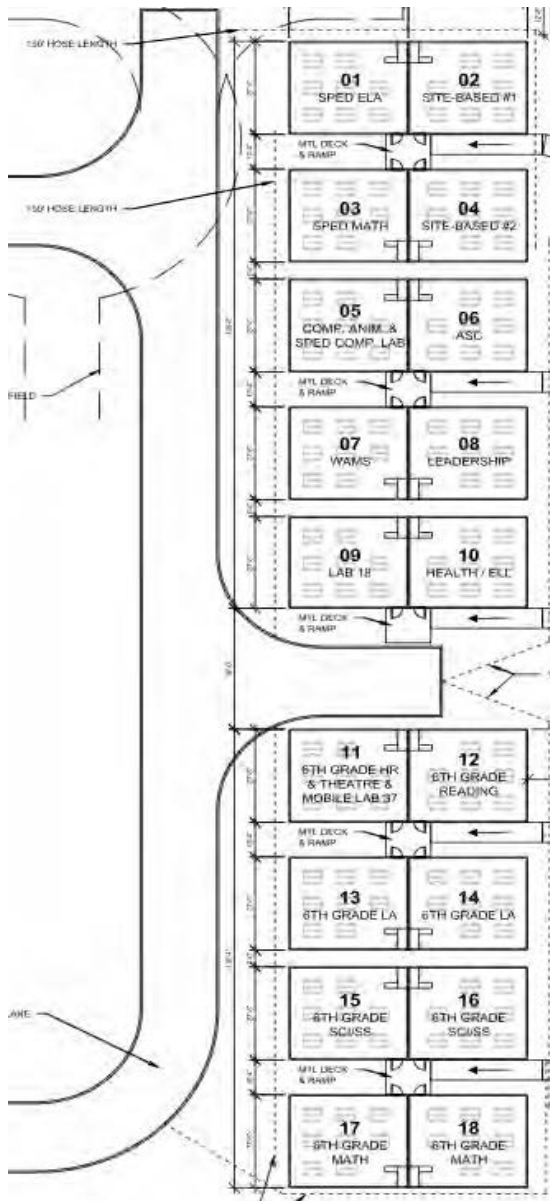
CURRENT ACTIVITIES

- Soderstrom Architects are on schedule to submit the permit set of documents to the City of Ashland in July.
- The Design Team completed the drawings for the temporary Modulares.
- Adroit and an independent constructability firm reviewed the 75% documents for clarity and buildability.



ACTIVITIES SCHEDULED FOR NEXT PERIOD

- Issue permit set to City of Ashland.
- Begin temporary modular work. Additionally, begin work at Lincoln School for John Muir Outdoor School.



HIGHLIGHTS

- Design continues to be on schedule.
- Planning for relocation of students during construction.

CHALLENGES

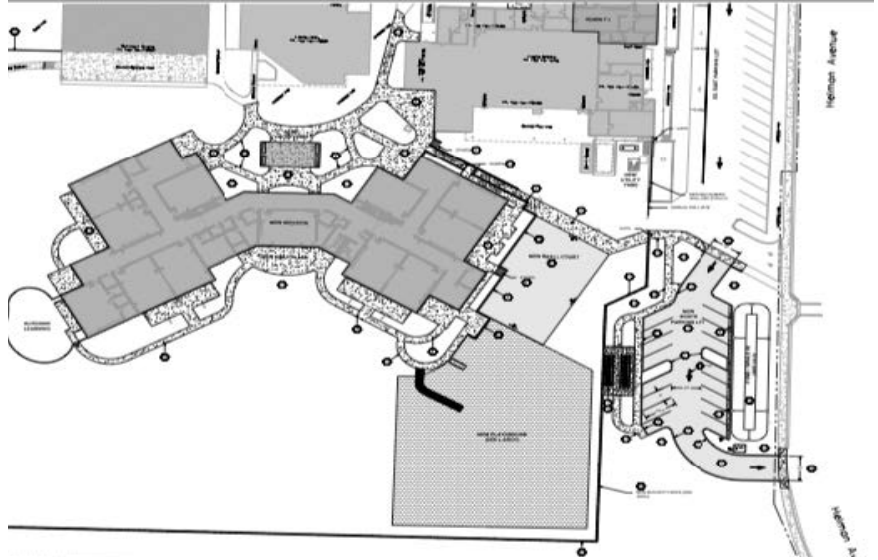
- Approve and implement solution for temporary relocation of students and staff during construction.

HELMAN ELEMENTARY SCHOOL

CURRENT ACTIVITIES

In June, the Construction Document (CD) phase began and is at 50% complete. This is the stage where BBT Architects and their consultants compile the finalized drawings and specifications that will be used for permitting, bidding and construction. Brightworks has been working with the Design Team to find ways to meet the Climate Energy Action Plan (CEAP) strategies for the City of Ashland.

This includes the use of sustainable finishes and reducing embodied carbon in the project. Working with Rogue Planning, findings were generated and included with the zoning permit application. The Ashland School District, HMK and BBT Architects teamed up with MRC Recreation to work on designing a new playground since the construction will require removal and relocation of the existing playground. The new playground will incorporate physical education features and imaginative play opportunities.



Helman Elementary School Site Plan



Conceptual Basketball Court

ACTIVITIES SCHEDULED FOR NEXT PERIOD

The playground design will continue. BBT Architects and their consultant team will have a site visit to investigate existing conditions.

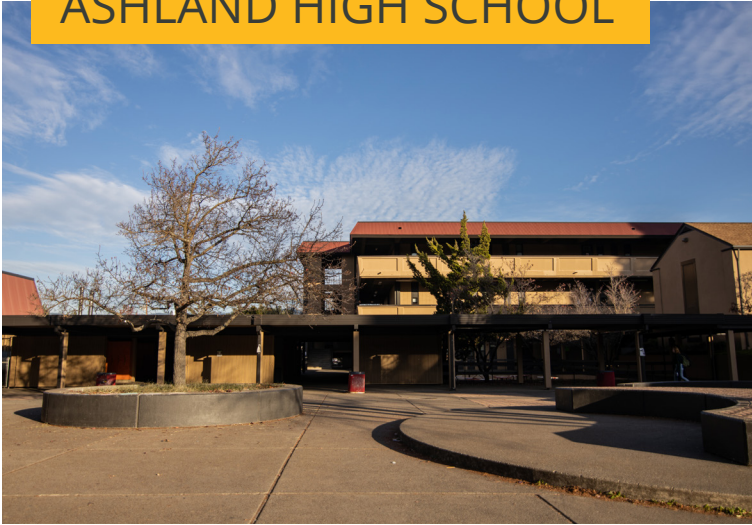
Conceptual Playground



HIGHLIGHTS

- Zoning Permit Application
- 50% Construction Documents

ASHLAND HIGH SCHOOL

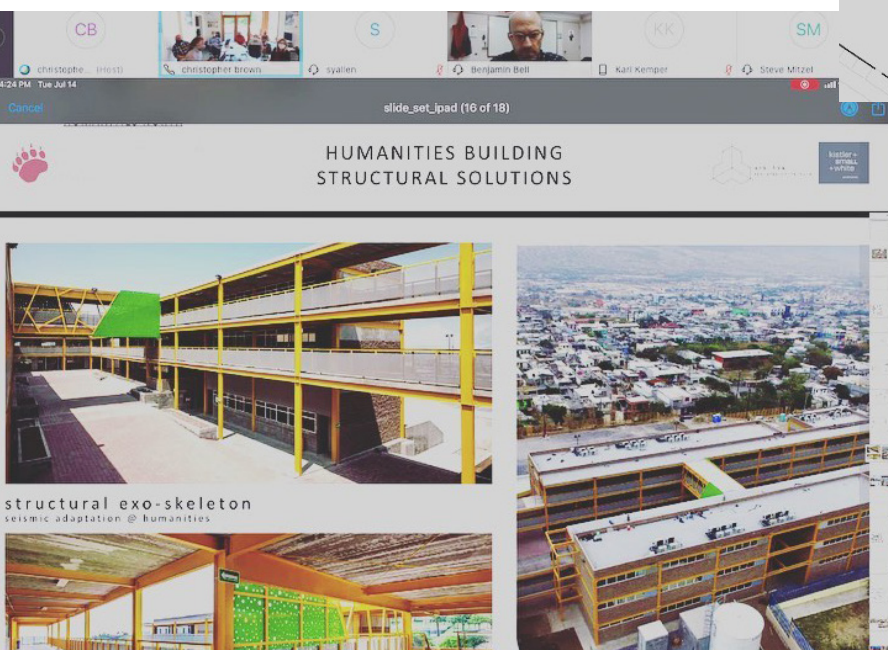
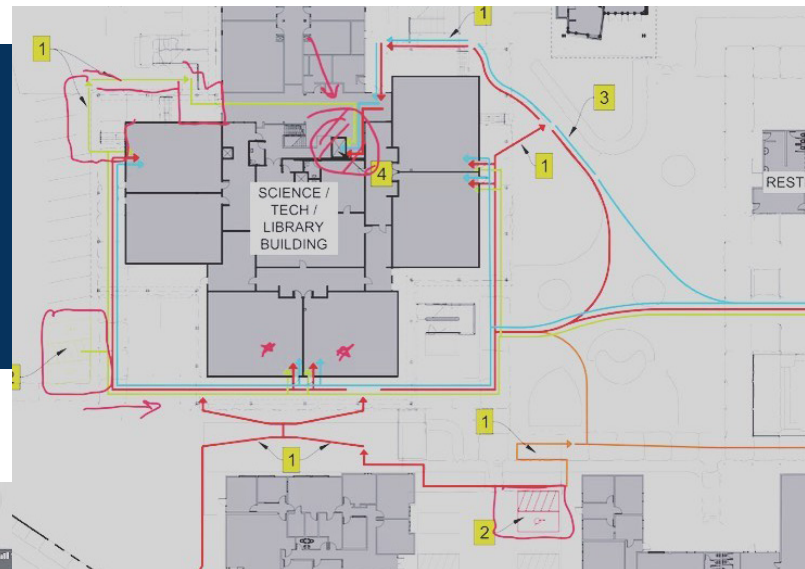


CURRENT ACTIVITIES

- arkitek:design&architecture/ kistler+small+white designers are revising the design schedule to reflect resumption of design activities in early July.
- Evaluation of Hazardous Materials investigation and Geotechnical investigation reports.
- Developing strategies for seismic upgrade of the buildings.
- Identify and review existing grades to determine ADA accessible pathways throughout the campus.

ACTIVITIES SCHEDULED FOR NEXT PERIOD

- Schematic Design will commence with additional design charrettes with the High School Core Team and site visits to evaluate existing classrooms and building conditions.



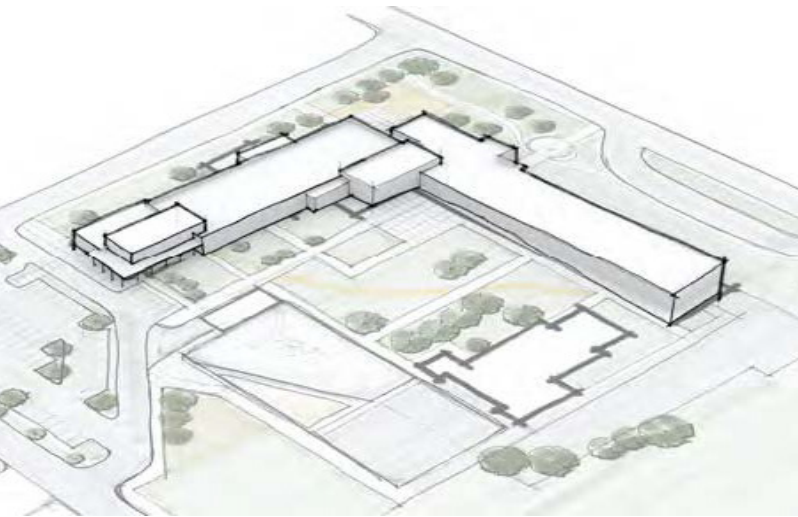
HIGHLIGHTS

- Onsite meeting to review existing site grades.

WALKER ELEMENTARY SCHOOL

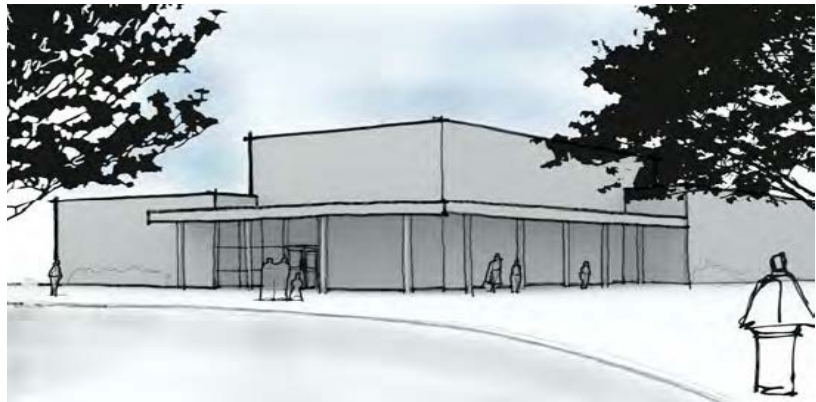
CURRENT ACTIVITIES

In June, the Core Design Team met twice to start the Schematic Design (SD) process. In SD, the Team takes the general program that was developed in pre-design and starts to formulate a tangible layout that meets the Program needs and improves the existing campus based on the Bond. Adroit Construction will now begin participating in the Design Process.



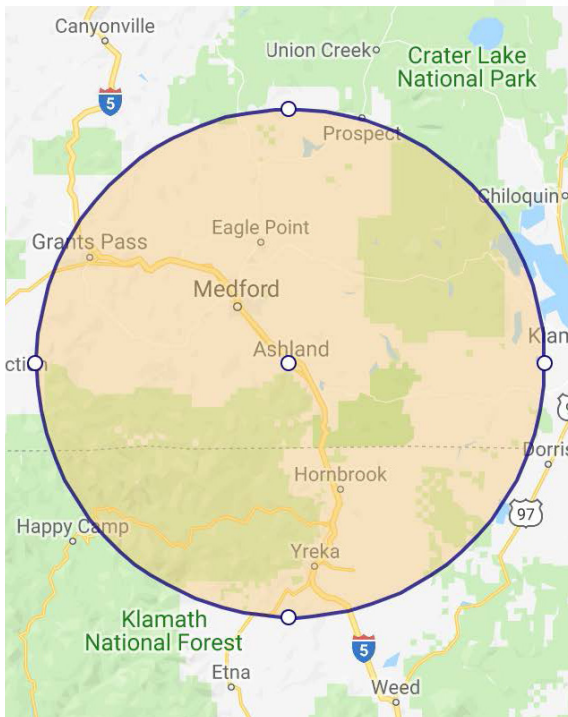
ACTIVITIES SCHEDULED FOR NEXT PERIOD

In July, the Core Design Team will continue the SD process. There will also be a workshop for Seismic, Mechanical, Electrical, Plumbing and Sustainability.



HIGHLIGHTS

- Schematic Design has begun.



The following list of local vendors who are currently working on the projects.

ASHLAND AREA VENDORS (DEFINED AS ROGUE VALLEY)

- **HMK Company - Medford**
- **Pacific 3D Reality Capture - Ashland**
- **Pariani Land Surveying LLC - Eagle Point**
- **arkitek - Ashland**
- **Douglas Pacific - Ashland**
- **Ciota Engineering - Ashland**
- **Powell Engineering - Medford**
- **Covey Pardee Landscape Architects - Ashland**
- **ZCS Engineering and Architecture - Medford**
- **Kistler+Small+White Architects - Ashland**
- **KenCairn Landscape Architecture - Ashland**
- **Adroit Construction Co. - Ashland**

