



Ashland School District
inspiring learning for life



GENERAL PROGRAM UPDATE

Mechanical contractors and engineers reviewed the Heating Ventilation and Air Conditioning (HVAC) equipment throughout the district.



In the month of April, the project teams continued to further the projects, with Ashland Middle School + John Muir Outdoor School and Helman Elementary School pushing into the final phase of design.

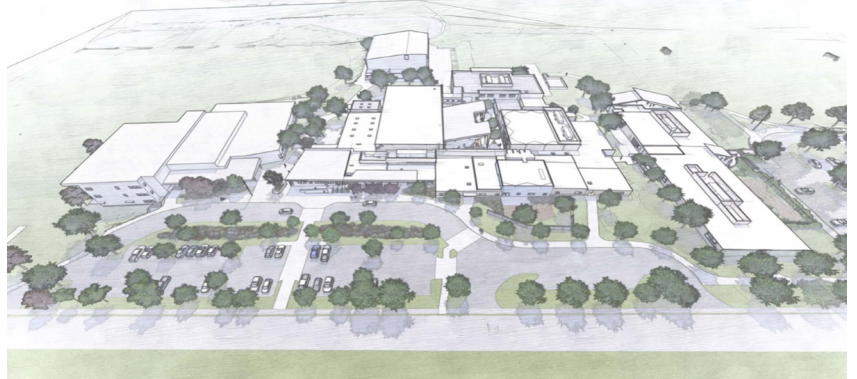
Ashland Middle School + John Muir Outdoor School reached the 50% Construction Documents milestone which triggers the constructability review. This review ensures the various aspects of the design are integrated and can be built without conflicts. Additionally, the team began discussing phasing with the CMGC and the school administrators. The team also began working on a temporary location plan for students and staff during the construction period.

The District and HMK also continue work with a security consultant to create standards for access control and security. This will be applied to all of the projects in the district.

ASHLAND MIDDLE SCHOOL + JOHN MUIR OUTDOOR SCHOOL

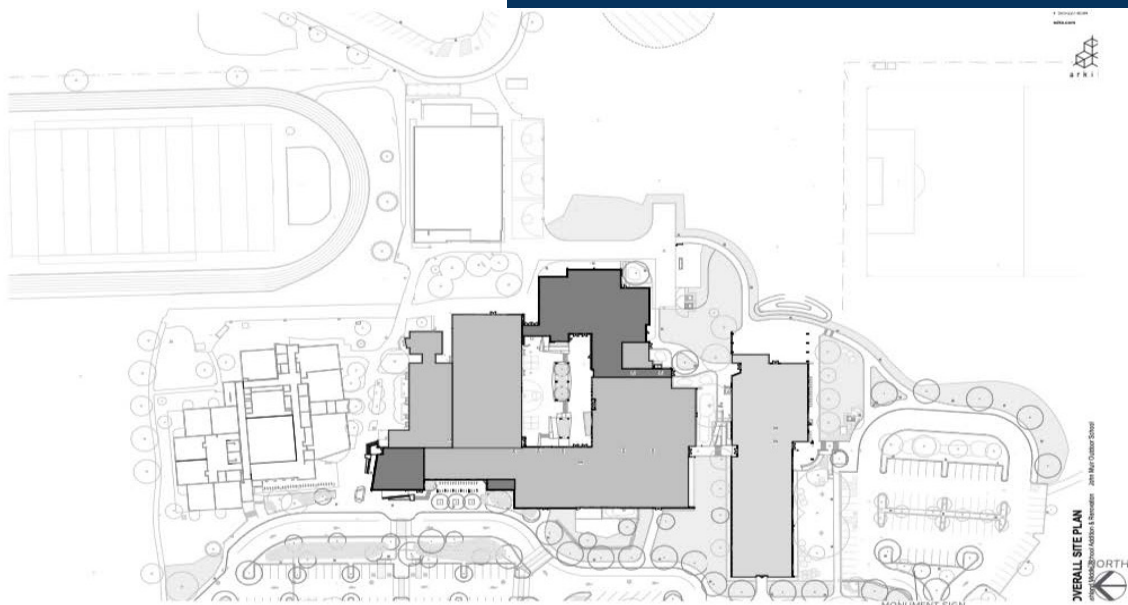
CURRENT ACTIVITIES

- Soderstrom Architects launched into the Construction Documents (CD), the final phase of design. The fruits of Design Development (DD) were showcased in Presentations to the Middle School and John Muir School Site Committees.
- Value Engineering (VE) and Budget Reconciliation refinements are being incorporated into the plans and specifications.
- Underground utilities mapping, and additional geotechnical and hazardous materials investigation was completed. Existing building condition investigation by the Construction Manager, Adroit Construction, was completed to assist the architects and engineers in making critical design decisions.



ACTIVITIES SCHEDULED FOR NEXT PERIOD

- 50% completion of Construction Documents.
- Constructability Review of drawings and specification.
- Planning for moving and relocation during construction.
- Ongoing discussions with Brightworks to incorporate sustainability and environmentally friendly material and practices.



ASHLAND MIDDLE SCHOOL + JOHN MUIR OUTDOOR SCHOOL



HIGHLIGHTS

- The architects achieved the 50% CD Deadline during these challenging times.
- Various critical field investigations were completed to inform the design.

CHALLENGES

- Develop moving and temporary relocation plans for students and staff during construction.
- Continuing meetings and field investigations with the restrictions of COVID-19.

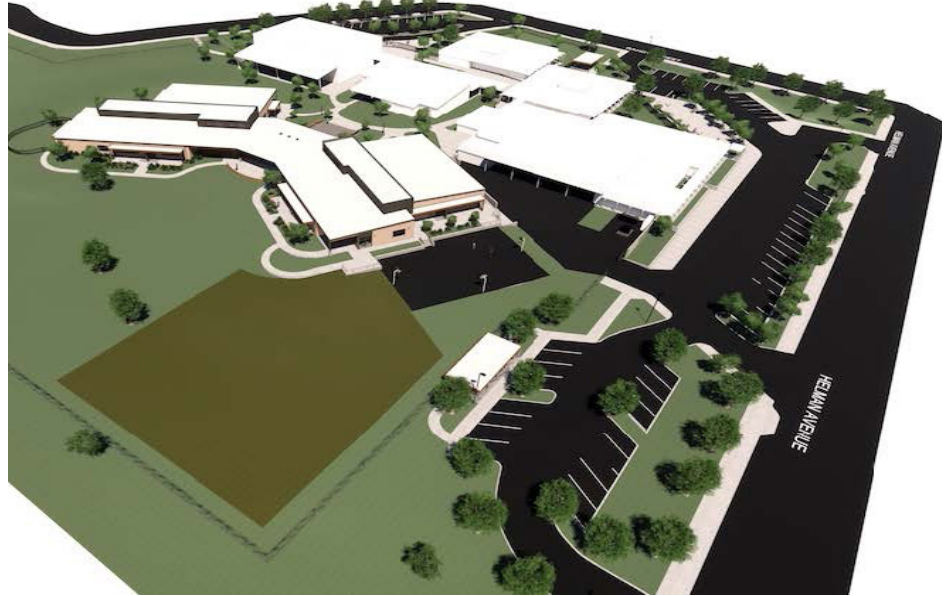
SOLUTIONS

- Video conferencing for meetings and working remotely leveraging electronic communication technologies.
- Social distancing and wearing masks.

HELMAN ELEMENTARY SCHOOL

CURRENT ACTIVITIES

The Design Development (DD) Phase was completed and the drawing set and specifications were sent to Adroit and Construction Focus to begin developing an estimate for the project. One meeting for DD took place in April. While at the meeting, the BBT team presented a flyover video of the new building addition. This gave the design group a more concrete look at their hard work over several months of design meetings. BBT, HMK and Brightworks met to discuss the energy modeling that was performed on the design.



Rogue Planning and Development was contracted to assist in drafting the findings for the permit application. BBT, ASD, HMK, MFIA, Conley Engineering, Walker Engineering and KenCairn Landscape met twice in April to review the details of the design and how those pertain to function.

ACTIVITIES SCHEDULED FOR NEXT PERIOD

The Design Development (DD) phase is completed and Adroit and Construction Focus is working on an estimate and reconciliation.



HIGHLIGHTS

- 100% DD Package.

ASHLAND HIGH SCHOOL**CURRENT ACTIVITIES**

- arkitek:design&architecture / kistler+small+white designers are analyzing the programming information and input from design charrettes with the high school Core Team in order to complete the pre-design/programming documentation. This is a critical process that forms the basis for developing schematic design options.
- Hazardous Materials investigation and Geotechnical investigation.

ACTIVITIES SCHEDULED FOR NEXT PERIOD

- Schematic Design will commence with additional design charrettes with the high school Core Team and site visits to evaluate existing classrooms and building conditions.
- Completion of Hazardous Materials and Geotechnical investigation.
- Survey of existing mechanical and electrical systems by design engineers.

**HIGHLIGHTS**

- Hazardous materials investigation was completed, and geotechnical investigation started.
- Pre-design continued on schedule.

CHALLENGES

- An application for Oregon State grant funding for seismic upgrade of the Humanities Building will be considered for award next month.
- Continue to safely progress the work in the COVID-19 environment.

WALKER ELEMENTARY SCHOOL

CURRENT ACTIVITIES

During the month of April, BBT Architects and the core team completed the programming for Walker. This is a crucial phase and significantly kicks off the design process. There were three responses for Request for Proposals by the CMGC firms. Scoring took place and two firms received invitations to interview for next month, Adroit Construction and Ausland Construction.



ACTIVITIES SCHEDULED FOR NEXT PERIOD

In May the core team will be interviewing two CMGC Proposers, Adroit Construction and Ausland Construction. GRI will be visiting the site to perform borings and Dilatometer testing. This will give the design team important geotechnical information.

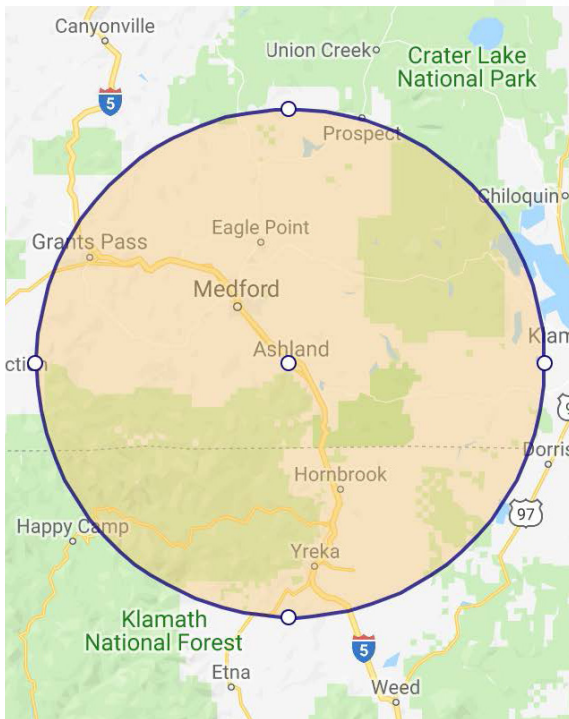
HIGHLIGHTS

- Programming was completed.
- Proposals were received and scored for CMGC.

CHALLENGES

- Remote Meetings.





The following list of local vendors who are currently working on the projects.

ASHLAND AREA VENDORS (DEFINED AS ROGUE VALLEY)

- HMK Company - Medford
- Pacific 3D Reality Capture - Ashland
- Pariani Land Surveying LLC - Eagle Point
- arkitek - Ashland
- Douglas Pacific - Ashland
- Ciota Engineering - Ashland
- Powell Engineering - Medford
- Covey Pardee Landscape Architects - Ashland
- ZCS Engineering and Architecture - Medford
- Kistler+Small+White Architects - Ashland
- KenCairn Landscape Architecture - Ashland
- Adroit Construction Co. - Ashland

