



Ashland School District
inspiring learning for life



MAY 2020

BOND NEWSLETTER

GENERAL PROGRAM UPDATE

The month of March presented a new challenge for the bond program team, with the COVID19 pandemics and state Stay-At-Home order. Despite the new challenges that were presented, all projects underway have continued. The teams leveraged technology and conference calls to continue to advance programming and design meetings at the four major projects.

Ashland Middle School + John Muir Outdoor School completed the Design Development phase and proceeded into the final phase of design, Construction Documents. The project teams, utilizing safe distancing and sanitizing requirements outlined by the CDC, began conducting destructive investigation at all of the schools. This process allows the design team to fully understand how the buildings were constructed.

Additionally, the project design teams began discussion with Brightworks to understand and strategize limiting the embodied carbon used in construction. Utilizing wood framing, limiting use of structural steel and limiting the cement mix were all strategies discussed. Follow-up meetings were scheduled in April and May as the design progressed.

ASHLAND MIDDLE SCHOOL + JOHN MUIR OUTDOOR SCHOOL

CURRENT ACTIVITIES

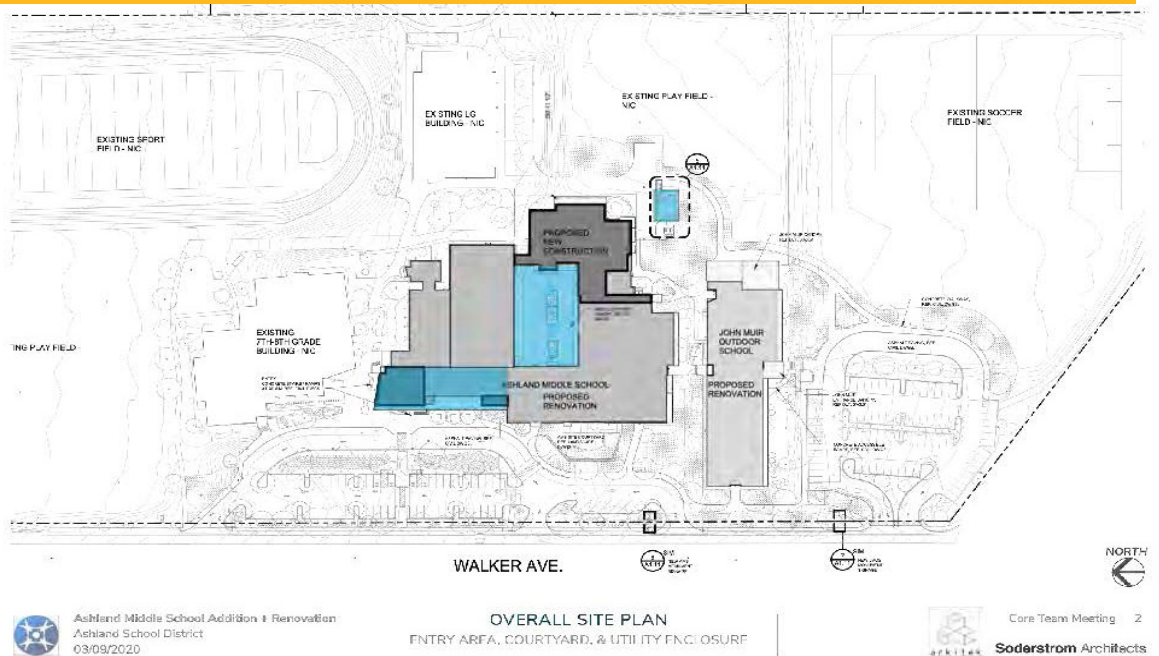
- The architectural team continued to progress Design Development throughout the month holding several design charrettes with teachers, administrators and district staff refining interrelationships as well as focusing on the internal requirements for each functional space.
- The Value Engineering (VE) and Budget Reconciliation processes were completed allowing for the plan layouts and components of the design to be more firmly defined and aligned with the education program requirements.
- A spirited Climate & Energy Action (CEAP) checklist joint workshop was conducted by HMK Company's sustainability consultant, Brightworks, for several of the bond project design teams.



HIGHLIGHTS

- Value Engineering and Budget Reconciliation neared completion as design work continued.

ASHLAND MIDDLE SCHOOL + JOHN MUIR OUTDOOR SCHOOL



CHALLENGES

- Successfully complete the 100% Design Development Budget Reconciliation and Value Engineering.
- Continue design and field investigations with the COVID-19 restrictions.

SOLUTIONS

- Video conferencing for meetings, and working remotely leveraging electronic communication technologies.

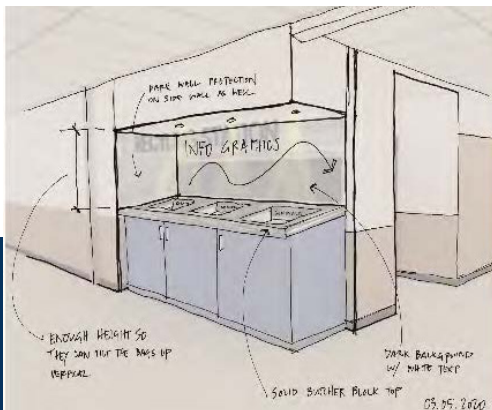


HELMAN ELEMENTARY SCHOOL

CURRENT ACTIVITIES

Design Development (DD) continues and surpasses the 50% mark. There were two meetings for DD in March. Some of the topics discussed during these meetings included discussion on plumbing fixtures, bike parking, cladding, canopies and instructional walls. HMK, Kencairn Landscape and BBT met with the Ashland city planners as a pre-application process to review the proposed addition and demolition. While at the meeting it was determined that we would contract Rogue Planning and Development Services to assist in findings for the permit applications.

BBT, ASD, HMK and Conley Engineering met to review the technology requirements for this project. At the meeting lighting, controls, alarms and instructional aides were reviewed.



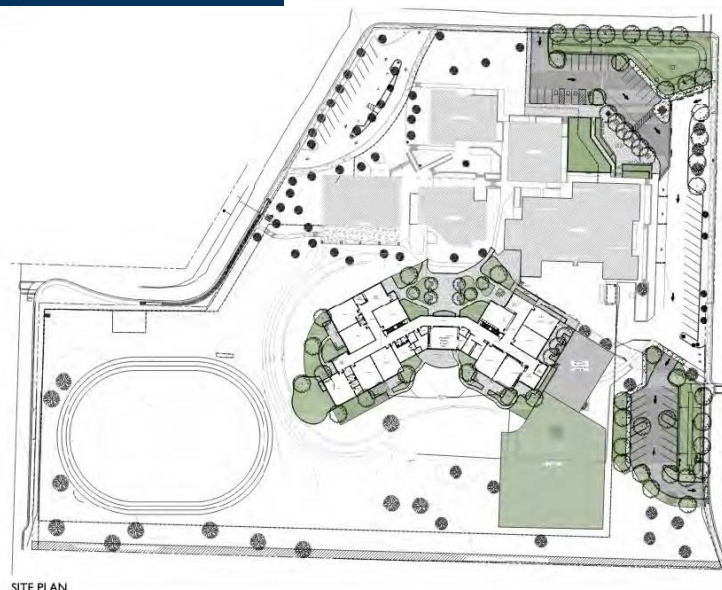
Recycling Center Concept

ACTIVITIES SCHEDULED FOR NEXT PERIOD

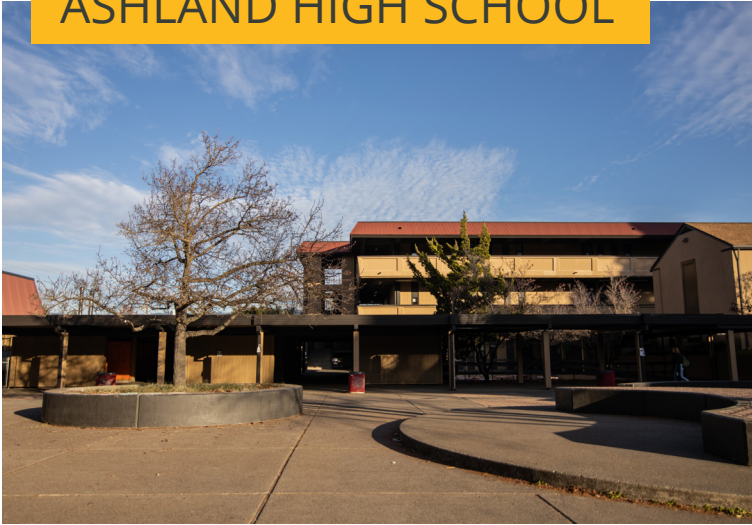
The Design Development (DD) phase was scheduled to be completed at the end of April. Once DD is completed, we will have another estimate reconciliation with Adroit and Construction Focus. We will be presenting our project to the planning commission and continuing to work with the city on what will be required to obtain building permits.

HIGHLIGHTS

- 50% DD Package
- Pre-Application meeting with the city



ASHLAND HIGH SCHOOL

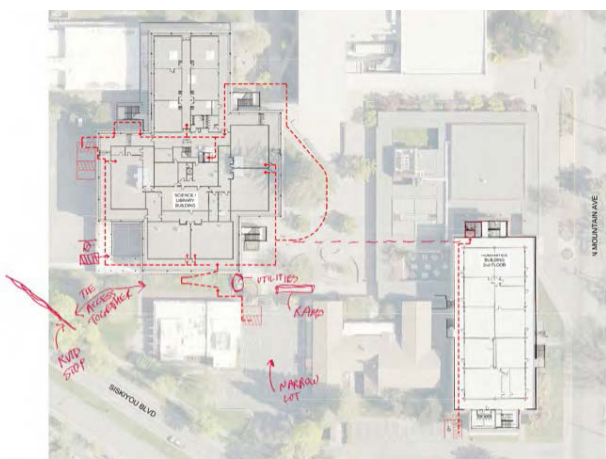
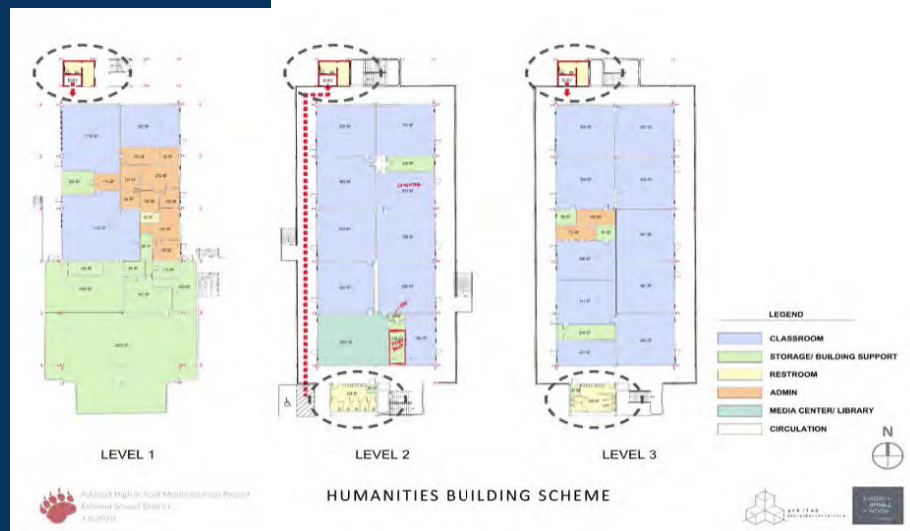


CURRENT ACTIVITIES

- The design team of arkitek; design&architecture / kistler+small+white made great progress in developing the educational programming for the project. A lively design charette was held with the high school Core Team to review and comment on the programming and potential design solutions to seismic upgrades and accessibility for all students and staff.
- Work to contract investigations for hazardous materials and geotechnical conditions is wellunderway.

ACTIVITIES SCHEDULED FOR NEXT PERIOD

Continued Pre-design and educational programming is awaiting the results of our grant application for state funds. We expect the awards to be announced in May, which usually come in April, but were delayed a little from COVID-19 impacts.



ACCESSIBILITY DIAGRAM

HIGHLIGHTS

- Educational programming developed with excellent Core Team feedback.

CHALLENGES

- Continuing meetings and field investigations with the restrictions of COVID-19.

WALKER ELEMENTARY SCHOOL

CURRENT ACTIVITIES

- Pre-Design and Program Development are nearing completion.
- Construction Manager | General Contractor (CMGC) Request for Proposals (RFP) was published. A mandatory pre-proposal meeting and walk through occurred. There was a great turn out of General Contractors.

**ACTIVITIES SCHEDULED FOR NEXT PERIOD**

- Schematic Design will begin.
- GeoTech borings and Dilatometer testing will take place.
- CMGC Proposals will be submitted and scored.
- Hazardous Materials Assessment will be available.



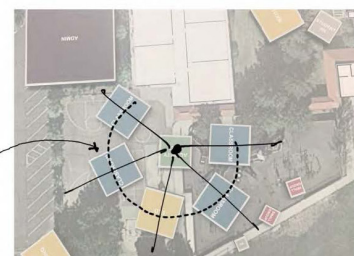
Concept Options

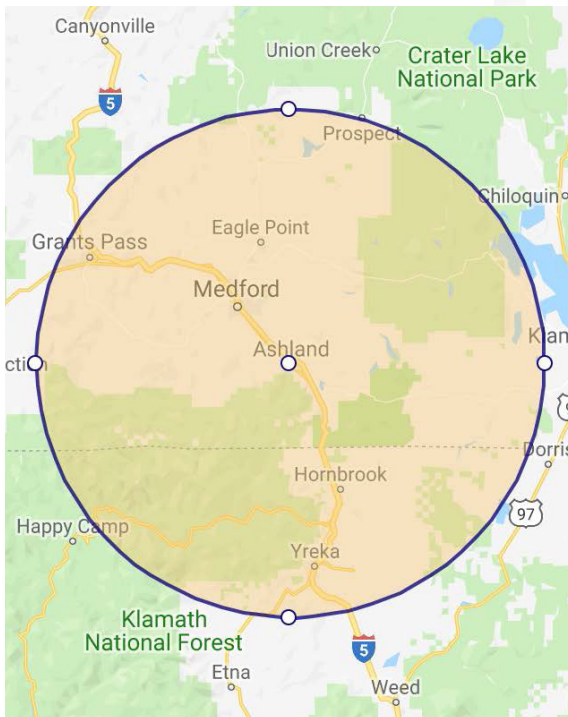
HIGHLIGHTS

- CMGC RFP was released

CHALLENGES

- Geo Tech Borings were rescheduled
- School Tours were cancelled due to illness





The following list of local vendors who are currently working on the projects.

ASHLAND AREA VENDORS (DEFINED AS ROGUE VALLEY)

- **HMK Company - Medford**
- **Pacific 3D Reality Capture - Ashland**
- **Pariani Land Surveying LLC - Eagle Point**
- **arkitek - Ashland**
- **Douglas Pacific - Ashland**
- **Ciota Engineering - Ashland**
- **Powell Engineering - Medford**
- **Covey Pardee Landscape Architects - Ashland**
- **ZCS Engineering and Architecture - Medford**
- **Kistler+Small+White Architects - Ashland**
- **KenCairn Landscape Architecture - Ashland**
- **Adroit Construction Co. - Ashland**

