



Ashland School District
inspiring learning for life



March 2020

BOND NEWSLETTER

GENERAL PROGRAM UPDATE



In January, the project teams at Helman Elementary School continued to meet with user groups and completed Schematic Design. Ashland Middle School's design team continued to work through Design Development.

Walker Elementary and Ashland High School, design kick-off meetings were conducted in January with each respective school's Core Team. Similar to Ashland Middle + JMOS and Helman, these meetings are centered around understand the individual school's program.

ASHLAND MIDDLE SCHOOL + JOHN MUIR OUTDOOR SCHOOL

CURRENT ACTIVITIES

- The architectural team continued to progress Design Development throughout the month holding several design charettes with teachers, administrators and district staff refining interrelationships as well as focusing on the internal requirements for each functional space.
- The Value Engineering (VE) and Budget Reconciliation processes were completed allowing for the plan layouts and components of the design to be more firmly defined and aligned with the education program requirements.
- The procurement of commissioning services, building envelope consulting, underground utilities mapping, and additional geotechnical investigation was initiated.



Ashland Middle School and John Muir Outdoor School's site councils both met with Soderstrom and Arkitek to review current drawings and provide input on building massing and the continued design refinements.

HIGHLIGHTS

- Value Engineering refinements were incorporated, and Budget Reconciliation completed.
- Design Development progressed to 75%.

CHALLENGES

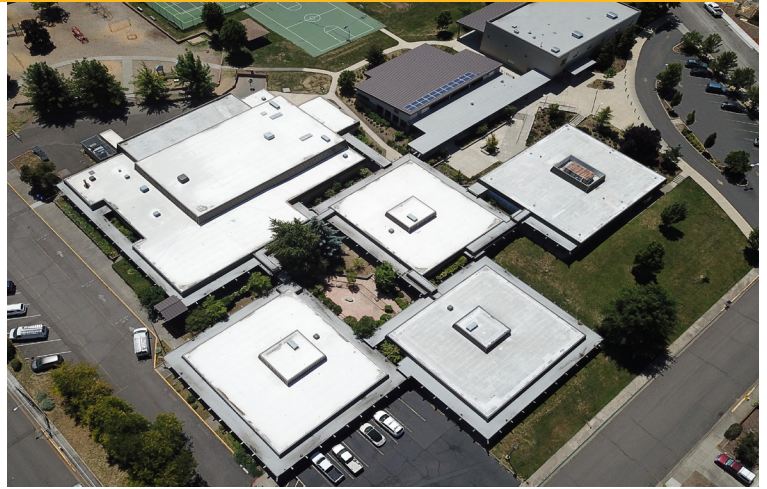
- Complete 100% Design Development on schedule to initiate another round of construction estimates, Budget Reconciliation, and Value Engineering.



HELMAN ELEMENTARY SCHOOL

CURRENT ACTIVITIES

January kicked off with BBT sharing the project updates with the entire Helman staff, meeting with the City to discuss the project, and holding the fourth Schematic Design (SD) meeting. By the end of the month, the SD Package was completed and sent to the CM/GC (Adroit) and a third-party estimator Construction Focus so they can begin to estimate the construction costs, which helps make sure the project team is staying on track with the budget.



ACTIVITIES SCHEDULED FOR NEXT PERIOD

Design will continue into the Design Development (DD) phase as Adroit and Construction Focus continues to work on the SD estimate. HMK will also be meeting with the City of Ashland to go over the project to date and meeting with user groups at the school to share the project and accept any input those groups may have.

HIGHLIGHTS

SD Package completion!

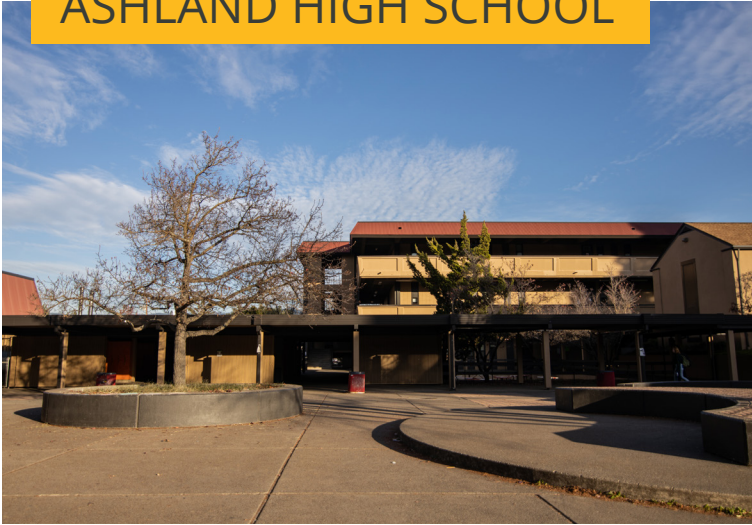
SOUTH (WEST) ELEVATION



NORTH ELEVATION



ASHLAND HIGH SCHOOL



CURRENT ACTIVITIES

- The design services contract was approved by the Board and awarded to the firm of [arkitek;design&architecture](#) / [kistler+small+white](#).
- On January 29th the Design Kickoff Meeting was held at the High School conference room. The Bond Program Executive/Coordinator and Administrative Assistant, HMK Program and Project Managers, [arkitek;design&architecture](#) / [kistler+small+white](#) designers, and the high school Core Team of select teachers and administrators were introduced to each other. Protocols, processes, and the schedule for conducting the design and construction of the project were explained and discussed.

ACTIVITIES SCHEDULED FOR NEXT PERIOD

- Pre-design and educational programming including meetings with the Core Team and analysis of existing facilities.
- Scheduling of geotechnical investigation and procurement of hazardous materials investigation services.



HIGHLIGHTS

- Architectural services contract was awarded to the firm [arkitek](#) / [kistler+small+white](#).
- Geotechnical investigation contract was awarded.

WALKER ELEMENTARY SCHOOL

CURRENT ACTIVITIES

- A pre-design meeting took place with the Walker Core team, HMK and BBT Architects to review the design process, get to know the “Walker Culture”, discuss schedule and determine where some of the focus of the improvements should take place.
- Hazardous Material Survey took place.
- Contract for Geo Tech services with GRI was signed.

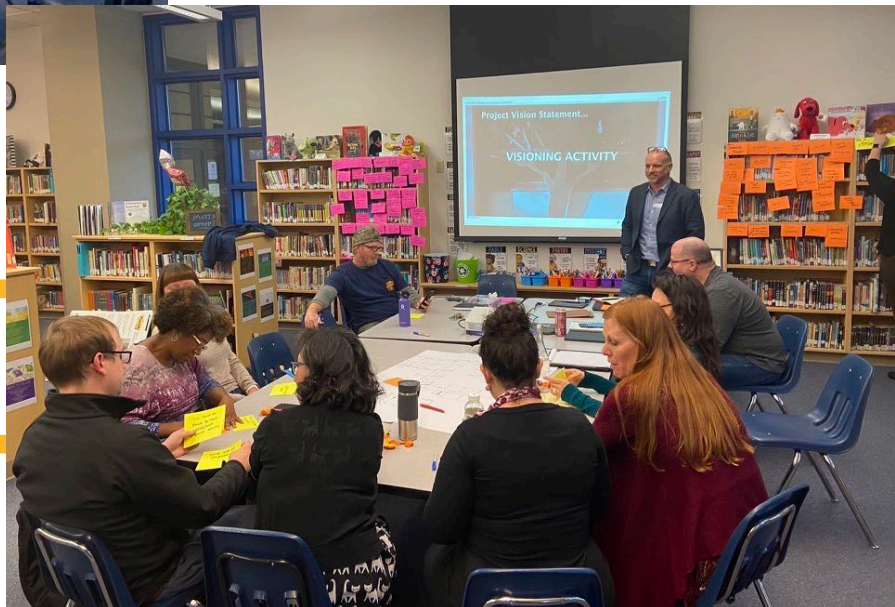


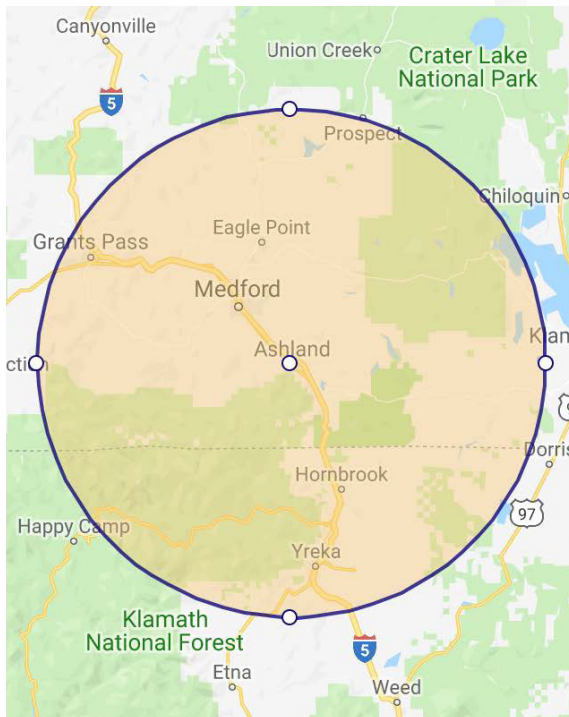
ACTIVITIES SCHEDULED FOR NEXT PERIOD

- The Walker Core team, HMK and BBT will continue to meet and review the needs of the school which will help lead into the Schematic Design process.
- Site Survey will occur.
- Hazardous Materials Assessment will be available.

HIGHLIGHTS

- BBT Architecture in contract for design.





The following list of local vendors who are currently working on the projects.

ASHLAND AREA VENDORS (DEFINED AS ROGUE VALLEY)

- **HMK Company - Medford**
- **Pacific 3D Reality Capture - Ashland**
- **Pariani Land Surveying LLC - Eagle Point**
- **arkitek - Ashland**
- **Douglas Pacific - Ashland**
- **Ciota Engineering - Ashland**
- **Powell Engineering - Medford**
- **Covey Pardee Landscape Architects - Ashland**
- **ZCS Engineering and Architecture - Medford**
- **Kistler+Small+White Architects - Ashland**
- **KenCairn Landscape Architecture - Ashland**
- **Adroit Construction Co. - Ashland**

