



Ashland School District  
*inspiring learning for life*



February 2020

# BOND NEWSLETTER



## GENERAL PROGRAM UPDATE

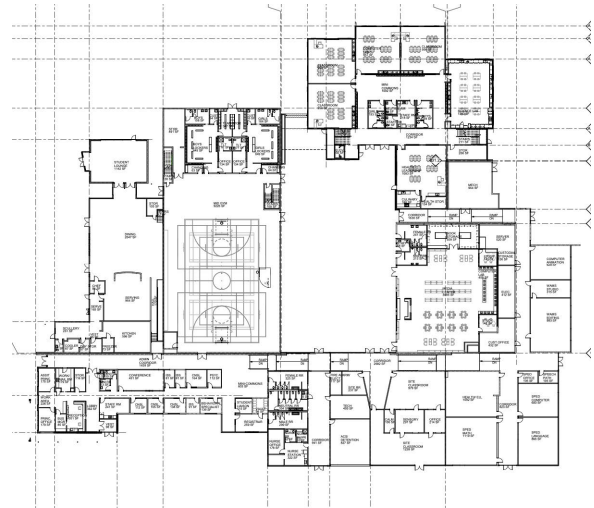
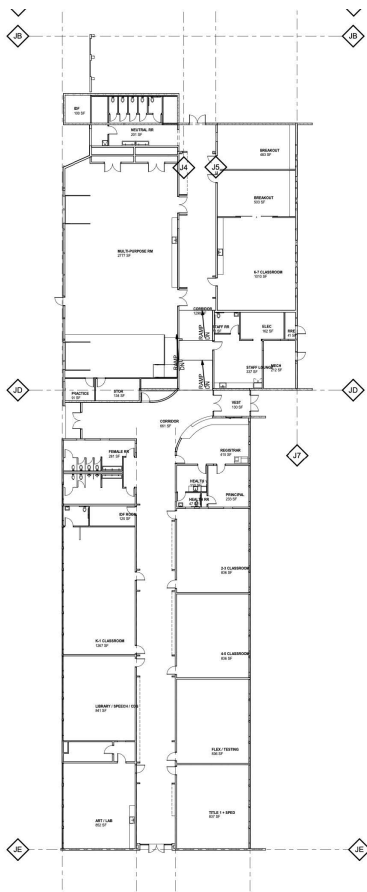
In December, the project teams at Helman Elementary School continued to meet with user groups as they continue with Schematic Design. Ashland Middle School's design team conducted the first round of Design Development Focus Group meetings. As the team moves into Design Development, the input becomes more refined in to the specific uses of the program. Additionally, system meetings were conducted at both Ashland Middle and Helman Elementary during the winter break. During these meetings, the engineers reviewed existing mechanical, electrical and plumbing systems as well as conducting investigative demolition of piping to understand the condition.

With design teams selected and board approved at Walker Elementary and Ashland High School, design kick-off meetings were scheduled in January with each respective school's Core Team.

## ASHLAND MIDDLE SCHOOL + JOHN MUIR OUTDOOR SCHOOL

### CURRENT ACTIVITIES

- The architectural team continued to progress Design Development throughout the month in a number of focused work sessions engaging teachers, administrators and district personnel on various details of the design.
- On December 17th the architects conducted lively design meetings with the Middle School and John Muir Outdoor School representatives to present interior finish options.
- Value Engineering (VE) and Budget Reconciliation processes continued. The associated design modifications were implemented after a series of critical meetings at which the Soderstrom architects presented several VE design options for consideration. In these work sessions, the designers received practical and insightful feedback from the District, Middle School, and John Muir Outdoor School representatives, HMK project manager, and Adroit construction manager.



### HIGHLIGHTS

- Schematic Design phase Construction Estimate, and Value Engineering completed.
- Design Development progressed to the 50% milestone.

### CHALLENGES

- Incorporate Value Engineering design refinements and complete Design Development on schedule.



## HELMAN ELEMENTARY SCHOOL

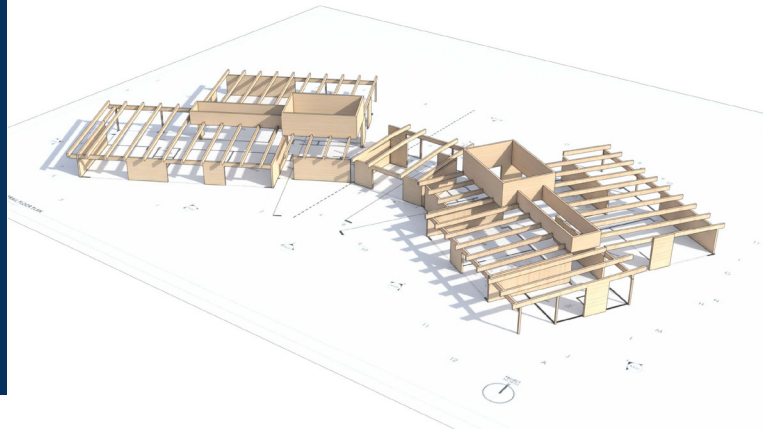
### CURRENT ACTIVITIES

BBT continued with the Schematic Design Phase, working closely with the Core Team, User Groups, and Site Core teams to gather input to further develop the design. This month, exterior and interior colors and details will start showing in the designs as we push toward the design development phase.



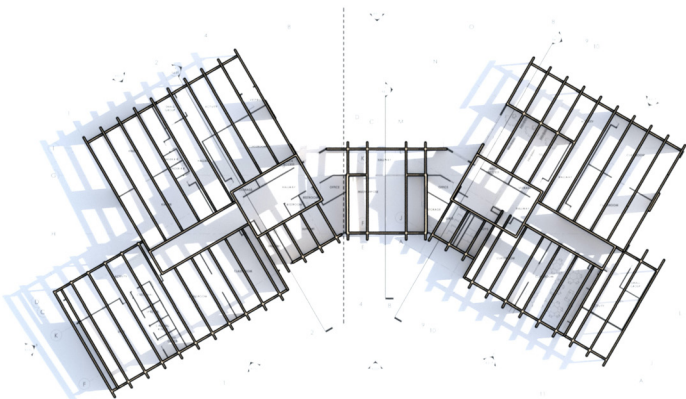
### ACTIVITIES SCHEDULED FOR NEXT PERIOD

Next month, BBT will provide a complete Schematic Design set of documents to the CMGC and a third-party estimator, Construction Focus, to provide an early cost estimate so the design team can analyze be certain their direction and scope align with budget.



### HIGHLIGHTS

BBT was able to sit down with various User Groups to help gather input. These groups are assembled of similar users, such as custodial or SPED, and provide vital feedback to the design team on how they use their spaces, what works for them, what doesn't, and what direction they would like to see their spaces go.



## ASHLAND HIGH SCHOOL

**CURRENT ACTIVITIES**

- The geotechnical investigation contract was awarded, and the field work is scheduled for Spring Break.
- Fee negotiations were completed and the recommendation to award the contract for architectural services by the firm [arkitek / kistler+small+white](#) was sent to the Board for approval.

**ACTIVITIES SCHEDULED FOR NEXT PERIOD**

- Pre-design and programming.

**HIGHLIGHTS**

- Architectural services contract was awarded to the firm [arkitek / kistler+small+white](#).
- Geotechnical investigation contract was awarded.





## WALKER ELEMENTARY SCHOOL

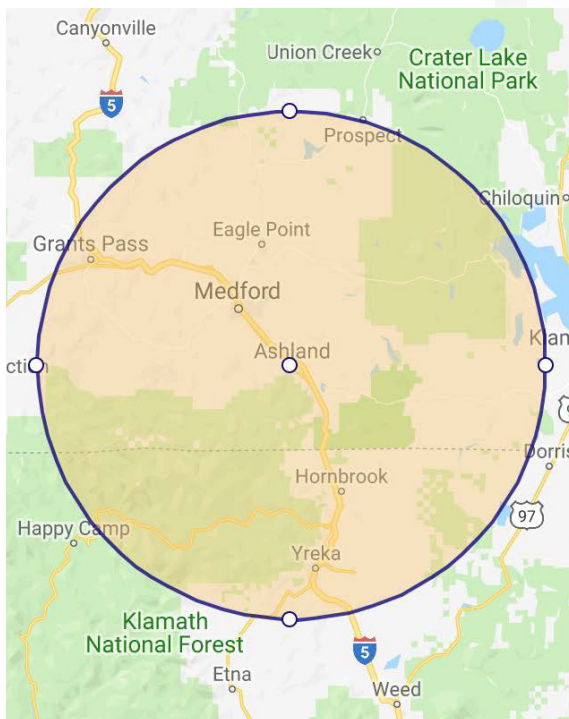
**CURRENT ACTIVITIES**

- A Recommendation to Award was signed for Architectural service from BBT Architects.
- District procured services to conduct the hazardous material testing of the project.

**ACTIVITIES SCHEDULED FOR NEXT PERIOD**

- Contract with BBT Architecture for design services.
- Solicitation of Surveying services at the site.
- Hazardous material testing.





The following list of local vendors who are currently working on the projects.

**ASHLAND AREA VENDORS (DEFINED AS ROGUE VALLEY)**

- HMK Company - Medford
- Pacific 3D Reality Capture - Ashland
- Pariani Land Surveying LLC - Eagle Point
- arkitek - Ashland
- Douglas Pacific - Ashland
- Ciota Engineering - Ashland
- Powell Engineering - Medford
- Covey Pardee Landscape Architects - Ashland
- ZCS Engineering and Architecture - Medford
- Kistler+Small+White Architects - Ashland

